

Garbage Collection Calendar

JONAN
Koizumi-cho 1-3 ~ 1-34

燃やす Collection Day for Burnable Trash 缶 Collection Day for Aluminum Cans and Metal Items

プラ Collection Day for Plastic Containers and Wraps びん Collection Day for Glass Bottles/Jars 埋立 Collection Day for Landfill (including old batteries and used lighters)

April

Sun.	Mon.	Tue.	Wed.	Thu.	Fri.	Sat.
	1	2	3	4	5	6
	燃やす	プラ		燃やす びん		
7	8	9	10	11	12	13
	燃やす	プラ	埋立	燃やす 缶		
14	15	16	17	18	19	20
	燃やす	プラ		燃やす びん		
21	22	23	24	25	26	27
	燃やす	プラ		燃やす 缶		
28	29	30				
	収集 なし	プラ				

May

Sun.	Mon.	Tue.	Wed.	Thu.	Fri.	Sat.
			1	2	3	4
				燃やす びん		
5	6	7	8	9	10	11
	燃やす	プラ	埋立	燃やす 缶		
12	13	14	15	16	17	18
	燃やす	プラ		燃やす びん		
19	20	21	22	23	24	25
	燃やす	プラ		燃やす 缶		
26	27	28	29	30	31	
	燃やす	プラ		燃やす		

June

Sun.	Mon.	Tue.	Wed.	Thu.	Fri.	Sat.
						1
2	3	4	5	6	7	8
	燃やす	プラ		燃やす びん		
9	10	11	12	13	14	15
	燃やす	プラ	埋立	燃やす 缶		
16	17	18	19	20	21	22
	燃やす	プラ		燃やす びん		
23	24	25	26	27	28	29
	燃やす	プラ		燃やす 缶		
30						

July

Sun.	Mon.	Tue.	Wed.	Thu.	Fri.	Sat.
	1	2	3	4	5	6
	燃やす	プラ		燃やす びん		
7	8	9	10	11	12	13
	燃やす	プラ	埋立	燃やす 缶		
14	15	16	17	18	19	20
	燃やす	プラ		燃やす びん		
21	22	23	24	25	26	27
	燃やす	プラ		燃やす 缶		
28	29	30	31			
	燃やす	プラ				

August

Sun.	Mon.	Tue.	Wed.	Thu.	Fri.	Sat.
				1	2	3
				燃やす びん		
4	5	6	7	8	9	10
	燃やす	プラ		燃やす 缶		
11	12	13	14	15	16	17
	燃やす	プラ	埋立	燃やす		
18	19	20	21	22	23	24
	燃やす	プラ		燃やす びん		
25	26	27	28	29	30	31
	燃やす	プラ		燃やす 缶		

September

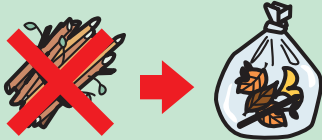
Sun.	Mon.	Tue.	Wed.	Thu.	Fri.	Sat.
1	2	3	4	5	6	7
	燃やす	プラ		燃やす びん		
8	9	10	11	12	13	14
	燃やす	プラ	埋立	燃やす 缶		
15	16	17	18	19	20	21
	燃やす	プラ		燃やす びん		
22	23	24	25	26	27	28
	燃やす	プラ		燃やす 缶		
29	30					
	燃やす					

Types of Trash and Recyclables You Can Take Out to the Designated Garbage Collection Site in Your Local Area

- *The maximum size is 40 cm in four directions (roughly the same size as an 18-liter plastic container). You can also take out garden weeds and tree branches that are under 5 cm in thickness and under 60 cm in length as well as umbrellas to the garbage collection site.
- *To dispose of other types of trash, please bring them to the Hikone Sanitation center as large-sized garbage (for a fee).
- *Each household is allowed to take out up to five garbage bags of trash at a time.
- *When it comes to a huge volume of garbage, please take it directly to the Hikone Sanitation center or Koyagi Chuhei Kichi (Higashi Ohmi, Koyagi-cho) for disposal.

Burnable Trash (please use the designated garbage bag.)

- The following types of garbage can also be disposed of as burnable trash. Leather items such as shoes, slippers, boots, etc. (including ones that have metal fittings for shoes), clothes, rubber, sponges, stuffed animals, used disposable hand warmers, ashes (the garbage type of ashes has been changed from landfill to combustible/burnable.)
- *Garden weeds and tree branches must be under 60 cm in length and 5 cm in thickness. (Weeds and branches bigger than this specific size must be disposed of as large-size garbage.)
- Plastic containers and wraps you cannot remove stains from cannot be recycled, and therefore please take them out as burnable.

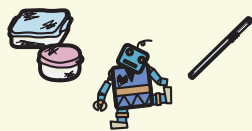


Put tree branches in the designated garbage bag, too.

Plastic containers and wraps (please use the designated garbage bag)

- Plastic containers and wraps include: Plastic containers, plastic bags, plastic cups, plastic bottles (e.g. a shampoo bottle), plastic food trays, Styrofoam (including a Styrofoam box for fruits, fish, etc.) and bubble wrap.
- *Stained plastic trash has to be disposed of as burnable.
- *Break up a Styrofoam box and pop bubble wrap before putting them into the designated garbage bag.

- Plastic items that need to be disposed of as landfill garbage: Stationery, toys, tooth brush, hangers and straws.
- *Plastic accessories that come with the above items are also categorized as landfill.



The following plastic items are categorized as landfill garbage.

Landfill (use the designated garbage bag)

- Main landfill garbage: The above-mentioned plastic items, umbrellas, glass items, Japanese pottery, ceramics, aluminum foil, DVDs, CDs, cosmetic and medicine containers, crown caps
- Kitchen knives, small knives, sickles: Wrap newspapers or cardboards around the blade of your knife, and clearly write "KIKEN" somewhere visible on the paper wrap.
- Old batteries and used lighters: Put them in a transparent plastic bag, not the designated garbage bag, and then leave the bag in an old batteries/used lighters collection box.
- Japanese pottery, ceramics and glass items that are too large to fit in the designated garbage bag: In order not to let them scatter, wrap those items in layers of newspaper and break them into pieces (do so safely). Keep all those small pieces wrapped in newspaper, seal it with duct tape and the like, and put it in the designated garbage bag. You are not allowed to dispose of it as large-size garbage.



広告欄

樹木葬やわらぎ苑
皆様の大切な方のご供養に...

お一人様からでもOK 安心の永代供養 管理の心配不要 承継者不要

お仏壇・お仏具・樹木葬・お墓のご相談は

株式会社 伊藤仏壇
〒522-0033 彦根市芹川町1435
0120-60-1056
■やわらぎ苑 管理:蓮成寺 〒522-0066 彦根市栄町1-5-11

外壁・屋根塗装専門店
弊社にお任せください!!

株式会社マルタカ
〒522-0201 彦根市高宮町1203-5
HP: <https://www.marutaka2000.com>

相談無料

公式LINE又はお電話よりお気軽にご相談ください
0749-30-0423

マルタカ 彦根

Be sure to separate trash correctly, and take out the trash to the designated collection area **no later than 8:00 a.m.** on each collection day.

- 燃やす

Combustible Garbage
- プラ

Plastic Containers and Wraps
- 缶

Aluminum Cans and Metal Items
- びん

Glass Bottles/Jars
- 埋立

Landfill (including old batteries and used lighters)

October

Sun.	Mon.	Tue.	Wed.	Thu.	Fri.	Sat.
		1 プラ	2	3 燃やす びん	4	5
6	7 燃やす	8 プラ	9 埋立	10 燃やす 缶	11	12
13	14 燃やす	15 プラ	16	17 燃やす びん	18	19
20	21 燃やす	22 プラ	23	24 燃やす 缶	25	26
27	28 燃やす	29 プラ	30	31 燃やす		

November

Sun.	Mon.	Tue.	Wed.	Thu.	Fri.	Sat.
					1	2
3	4 収集 なし	5 プラ	6	7 燃やす びん	8	9
10	11 燃やす	12 プラ	13 埋立	14 燃やす 缶	15	16
17	18 燃やす	19 プラ	20	21 燃やす びん	22	23
24	25 燃やす	26 プラ	27	28 燃やす 缶	29	30

December

Sun.	Mon.	Tue.	Wed.	Thu.	Fri.	Sat.
1	2 燃やす	3 プラ	4	5 燃やす びん	6	7
8	9 燃やす	10 プラ	11 埋立	12 燃やす 缶	13	14
15	16 燃やす	17 プラ	18	19 燃やす びん	20	21
22	23 燃やす	24 プラ	25	26 燃やす 缶	27	28
29 燃やす	30 収集 なし	31 収集 なし				

January

Sun.	Mon.	Tue.	Wed.	Thu.	Fri.	Sat.
			1	2 収集 なし	3	4
5	6 燃やす	7 プラ	8 収集 なし	9 燃やす びん	10	11
12	13 燃やす	14 プラ	15 埋立	16 燃やす 缶	17	18
19	20 燃やす	21 プラ	22	23 燃やす びん	24	25
26	27 燃やす	28 プラ	29	30 燃やす 缶	31	

February

Sun.	Mon.	Tue.	Wed.	Thu.	Fri.	Sat.
						1
2	3 燃やす	4 プラ	5	6 燃やす びん	7	8
9	10 燃やす	11 プラ	12 埋立	13 燃やす 缶	14	15
16	17 燃やす	18 プラ	19	20 燃やす びん	21	22
23	24 収集 なし	25 プラ	26	27 燃やす 缶	28	

March

Sun.	Mon.	Tue.	Wed.	Thu.	Fri.	Sat.
						1
2	3 燃やす	4 プラ	5	6 燃やす びん	7	8
9	10 燃やす	11 プラ	12 埋立	13 燃やす 缶	14	15
16	17 燃やす	18 プラ	19	20 燃やす びん	21	22
23	24 燃やす	25 プラ	26	27 燃やす 缶	28	29
30	31 燃やす					

Glass bottles

(no need to put a glass bottle in any bag. Instead, put it in a glass bottle collection box directly.)

- Recyclable glass bottles
For beverages, condiments, and food.
*Lids, caps and other glass items are categorized as landfill garbage
- Glass bottles for liquor
Return any glass bottles for liquor to the place of purchase.



Aluminum cans and metal items

(no need to put aluminum cans and metal in any bag. Instead, put either/both in the aluminum and metal collection box directly.)

- Main aluminum cans and metal items
Aluminum and steel cans for snacks, formula milk and beverages, pots (iron, aluminum, enamel, cast metal, etc.), and frying pans
- Spray cans, gas cartridges
Completely empty a spray can/gas cartridge before disposing of it.

*Metal items categorized as landfill garbage
Edged tools such as kitchen knives, small knives, etc. and spoons, forks, can lids and so on.

Plastic bottles

(no need to put plastic bottles in any bag. Instead, put it in the plastic bottle collection box directly.)

- How to dispose of plastic bottles.
Remove labels and caps from plastic bottles, and rinse each bottle before taking them out.
- Collection site
Drop plastic bottles into a plastic bottle collection box placed across Hikone. To find out collection box locations, please go to the official website of Hikone City.
- Collection schedule
You are allowed to drop plastic bottles into a collection box anytime.



Limited to plastic bottles with this mark only.

Collected at the city hall or its branch offices

Cooking oil

Fluorescent tubes, light bulbs, etc.

Collected at the Hikone Sanitation center

Large-size garbage

(including household appliances smaller than 1 meter in length, width and depth)

- Collection Date: Monday to Friday (except holidays, weekends, New Year holiday period.)
- Collection Time: 9:00 AM to 12:00 PM, 1:00 PM to 4:15 PM
- Aside from bringing garbage directly to the Hikone sanitation center, a garbage pick-up service is also available for a fee. (To use this service, you are required to schedule your pick-up day with the center at least one week in advance.)

*The Hikone sanitation center also offers a holiday garbage collection service at the center. Details on schedules of the center's holiday garbage collection service will be provided via Hikone's community newsletter, etc.

Contact

The Hikone Sanitation center

Tel. 0749-22-2734 FAX. 0749-24-7787

Address: 522-0055 Hikone-shi Nose-cho 279-1

- イラストの出典：経済産業省ウェブサイトのイラストを基に作製
(<https://www.meti.go.jp/policy/recycle/main/data/illust/index.html>)
- このカレンダーは、72,000枚作製し、1枚当たりの印刷単価10円（1円未満の端数切捨）です。ただし、原稿作成などにかかる職員の人件費は含んでいません。

広告欄

あなたにぴったりの住宅会社に出会える！

住宅会社選びの専門店

注文住宅の相談窓口

ご希望や予算、時期などきっちりお伺いした上で、住宅会社をご紹介。提携の大手ハウスメーカーや地元の優良工務店など、40社以上の住宅会社の情報が一度に分かります！

相談無料

株式会社おうみ家づくり相談所

彦根市大東町2番39号MSビル3F

営業時間 平日9:00~20:00(土日祝祭日：不定期営業)

HPか電話でご予約の上、ご家族揃ってお気軽にご来店ください

0749-21-4688

※電話連絡は曜日に関係なく9:00~20:00まで対応

JRびわこ線彦根駅下車徒歩3分

司法書士法人 遺言書 戸籍収集 生前贈与 名義変更 相続放棄 成年後見

おつみアット法務事務所

にご相談ください

初回相談無料

0749-21-4388

彦根市大東町2番39号 MSビル4F

受付時間 平日9:00~18:00 [土日祝相談]

代表司法書士・ファイナンシャルプランナー：松田勇夫／司法書士：河崎和典

ス・ドルツ・ア・ス

彦根店

有名ラーメン店の自販機

彦根駅前