

広報ひこね (英語版)

Community Newsletter *KOHO HIKONE*

No. 1460

Issue Date: April 1st, 2021

Published by:

Hikone Human Rights Policy Div.

Translated by:

VOICE Trans. Group

Satoru Yamakawa

Proofread by:

Martin Hawkes

Edited by:

Hikone Human Rights Policy Div.



April 2021

- COVID-19 Vaccine Information (P. 3 - 4)
- End of Construction (Hikone City Hall) (P. 5)
- Changes to Hikone City Hall, etc. (P. 5)
- April and May Infant Check-ups (P. 8)



(Facebook) <http://www.facebook.com/hikone.eng>

(Website of Hikone) <https://www.city.hikone.lg.jp/eng/index.html>

Contact Us	Telephone Number
Hikone City Hall	0749-22-1411 (Switch Board)
Human Rights Policy Division (To Speak to Our English Interpreter, Please Call This Number)	0749-30-6113
FACEBOOK	http://www.facebook.com/hikone.eng

You Can Request Our On-Site English Interpreter Services at the Information Desk of the Hikone City Hall. You Can Also Speak to Our Language Interpreter Via Phone.

Please Say “*EIGO TSUYAKU ONEGAI SHIMASU* (English Interpreter Please)”

This English-Language Version of *Koho* Hikone Is Issued Every Month.



This Foreign-Language Newsletter Is Available At:

- Shiga, Shiga Prefecture, and Seisen University
- Hikone Bunka Plaza
- Hikone City Library
- Hikone City Hall 3F
- AEON TOWN Hikone
- Hikone Fukushi Centre
- Shiga Bank (Ohyabu Branch)
- “Gyomu Super Market” (Toga-cho)
- Beisia Hikone
- Hikone City Hospital

Interpretation Services

•On-Site Interpreters Are Available At The City Hall Of Hikone.

Please say “*eigo-tsuuyaku-onegai-shimasu*” at the information desk.

“えいご つうやく おねがいます”

Hikone City Hall: Weekdays between 8:30 a.m. and 5:15 p.m.

*The availability of our interpreter services is subject to change.



(Facebook) <http://www.facebook.com/hikone.eng>



***Please Contact Each School Before You Attend.**



Japanese Language Classes

Day	Time	Location	Organization Name	Cost
Wednesday すいようび	7:00 p.m. to 8:30 p.m.	Shimin kaikan 市民会館	Hikoneshi Kokusai Kyoukai 彦根市国際協会 Tel: (0749)-22-5931 (Not available in Aug. and Dec. to Feb.)	100yen / lesson 100 円 / 1 回
Saturday どようび	2:00 p.m. to 4:00 p.m.	Naka-chiku Kouminkan 中地区公民館	Hikone Kokusai Kouryu-kai VOICE ひこね国際交流会 VOICE かつらだ さん (KATSURADA) TEL: 090-5156-6916	100yen / lesson 100 円 / 1 回
Sunday にちようび	10:00 a.m. to 11:30 a.m.	Nishi-chiku Kouminkan 西地区公民館	Volunteer Nihongo Kyoshitsu SMILE ボランティア日本語教室スマイル よしおか さん (YOSHIOKA) Tel: (0749)-24-7241	100yen / lesson 100 円 / 1 回
Monday to Friday (Except for holidays) げつようび～きんようび	①9:30 a.m. to 10:50 a.m. ②11:00 a.m. to 12:20 p.m. ③1:30 p.m. to 2:50 p.m. ④3:00 p.m. to 4:20 p.m.	Innovation Office “NAYASHICHI” Shiro-machi1-7-16	“Smile Satellite”(Weekday Class) NAYASHICHI Tel: 0749-46-5377 or みずの さん (MIZUNO) Tel: 070-5661-7345	200yen / lesson 200 円 / 1 回
Tuesday かようび Friday きんようび	9:00 a.m. to 10:20 a.m.	Asahinomori- Chiku Kouminkan	Smile みずの さん (MIZUNO) Tel: 070-5661-7345	200yen / lesson 200 円 / 1 回
Thursday もくようび	5:30 p.m. to 6:50 p.m.			



☆Information on the COVID-19 Vaccine Rollout (Part 1)

Since Pfizer Inc.'s COVID-19 vaccine was officially approved by the government of Japan on February 14, preparations to kick off a city-wide vaccination campaign have been in progress. Each person who is eligible for the COVID-19 vaccine will receive a vaccine card by mail in different phases at different times. All COVID-19 vaccines are publicly funded and hence will be administered free of charge. The vaccine manufactured by Pfizer Inc. requires every vaccine recipient to receive two doses three weeks apart. (Other vaccines need to be given 3 to 4 weeks apart.)

*Please keep in mind that this vaccine information was released on March 3, 2021. For future updates on the city's vaccine rollout, please regularly access the Hikone official website, the Hikone foreign-language community newsletter, the Hikone foreign-language Facebook page, etc.

Steps to Get the Vaccine

1, Receive a Vaccination Card

Hikone's COVID-19 vaccination campaign will be launched by offering initial supplies of the vaccine to seniors aged 65 and older (phase 1). Next, people with pre-existing medical conditions will be inoculated (phase 2). Those eligible for the vaccine will receive their vaccination tickets through the mail.

2, Schedule a Vaccine Appointment

The city will be administering the vaccine by appointment only.

From late April, eligible vaccine recipients will be able to schedule their vaccine appointments through a COVID-19 vaccination website, the mobile messaging app LINE and a vaccine call center. Information of how to schedule your vaccine appointment will be provided along with a vaccination card. COVID-19 vaccination schedules and sites will be announced through the official Hikone website and in monthly Hikone Community Newsletters.

*A call center for vaccine appointments is set to open on March 15. (Tel. 0120-152-811, only weekdays from 9:00 – 21:00)

3, Get a Shot

Each eligible vaccine recipient is required to fill out a pre-vaccination checklist (mailed alongside the vaccine ticket) beforehand with the help of his/her family (if necessary). Tickets for two doses of the vaccine and COVID-19 vaccination record are combined into one paper card, so please do not rip any vaccine ticket from the card.

Important Notes of Getting Vaccinated for COVID-19

• Upon Making Your Vaccine Appointment Via the Call Center

It is expected that the call center for vaccine appointments will become extremely busy, and it will take time to reach a call center representative. Please keep in mind that enough supplies of the vaccine for all eligible recipients will be secured.

• Do Not Fail To Show Up For Your COVID-19 Vaccine Appointment Without Notice

If you fail to come to a vaccination site for your reserved dose without notice, that dose will go to waste.

Every dose of the vaccine is extremely precious, so please help us to not waste any vaccine doses. If you want to cancel your vaccine appointment, you will be required to reschedule your appointment, which could disrupt the entire vaccination timetable.

- Those Who Have Allergies

For those who have had seen a doctor due to severe allergic reactions, such as facial swelling, a severe rash all over body, nausea, vomiting, cold sweat, breathing difficulties, dizziness, etc., to medicines, foods, among other things before, it is strongly advised that they should consult with their family physicians before getting the COVID-19 vaccine.

- Those Who Are Currently Under Medical Treatment

Please make a decision whether it is safe enough to receive the COVID-19 vaccine by consulting with your doctor.

- Every recipient has to be observed for 15 to 30 minutes at a vaccination site following the vaccine.

*If you have any questions with respect to the COVID-19 vaccine, please visit the website of the Japan Ministry of Health, Labor and Welfare or contact the following national/prefectural COVID-19 consultation centers.

[National Consultation Center]

MHLW COVID-19 Vaccine Call Center Tel. 0120-761-770 (9:00 – 21:00, everyday)

[Prefectural Consultation Center]

Shiga COVID-19 Vaccine Call Center Tel. 077-528-3588 (9:00 – 17:00, everyday)

Inquiries: Hikone Covid-19 Vaccination Management Office Tel: 0749-24-0816

☆Information on the COVID-19 Vaccination Rollout (Part 2)

During the month of April, the city of Hikone is scheduled to receive a batch of only 675 doses of the approved COVID-19 Pfizer vaccine for the 29,000 Hikone residents who are eligible in the initial phase of the Japanese vaccination campaign. For this reason, the city expects that its vaccination campaign will be rolled out on a limited scale in April.

The vaccine will be first provided for people aged 65 and above; however, given the limited number of COVID-19 vaccine doses allocated to Hikone and to take precautions to keep cluster infection risks to a minimum, the initial phase of Hikone's vaccination campaign will be started off by vaccinating senior residents living in nursing homes. Please check the estimated vaccination timeline below for people aged 65 and older who are not living in a nursing home.

- **Vaccination Timeline for People Aged 65 and Older, Excluding Those Living in a Nursing Home**

From April 5: COVID-19 Vaccine Cards Will Be Mailed Out

Mid-May: Start of Vaccination Appointments

Late-May: Start of Vaccinations

*Please remember that this timeline is the estimated schedule, and therefore, the timeline is subject to change depending on the allocation of vaccine doses to Hikone.

*Should you have any questions, please call Hikone's vaccination call centre at 0120-152-811(Weekdays, 8:30 -5:00)

*Please keep abreast of updates on the city's vaccine rollout through the official Hikone website, the community newsletter, the foreign-language Facebook, etc.

Inquiries: Hikone Coronavirus Vaccination Management Office Tel: 0749-24-0816

☆Beware of COVID-19 Vaccine Scams!!

An alarmingly high number of COVID-19 vaccine frauds have been reported to the Consumers' Affairs Center as of late. These scam artists contact random people via phone, text and e-mail, misleading them into paying non-existent upfront fees for the COVID-19 vaccine by eliciting bank account/credit card information.

The city of Hikone or any other government authority will by no means require anyone to provide one's financial or private information via phone, text or e-mail.

If you have received a suspicious phone call, message, mail and so on, please contact the Hikone Consumers' Affairs Center.

Inquiries: Hikone Consumers' Affairs Center
Tel: 0749-30-6144 (Weekday: 9:00 – noon, 13:00 – 16:15)

☆End of Construction for the Renovation of Hikone City Hall

Effective Thursday May 6, the city hall of Hikone is slated to reopen after the renovation construction.

During Golden Week, all departments inside the building of AI-Plaza Hikone will be moved back into the newly renovated city office. Further details will be provided in the May issue of our community newsletter.

Inquiries: City Hall Seismic Reinforcement Promotion Office
Tel: 0749-30-6114, Fax: 0749-30-6147

☆Easy and Quick Administrative Procedures at the City Hall

The city of Hikone has been working on the abolition of *Inkan* (personal name seal) requirement with the aim to streamline some administrative procedures for all visitors to the city hall.

Now the city is planning to implement more online services, so please stay tuned.

Inquiries: Hikone Work Style Reform Promotion Division
Tel: 0749-30-6149, Fax: 0749-22-1398

☆Changes to Hikone City Hall/Municipal Hospital/Board of Education

Effective April 1, some changes are going to be made to the following divisions of Hikone City Hall, etc.

Name Change

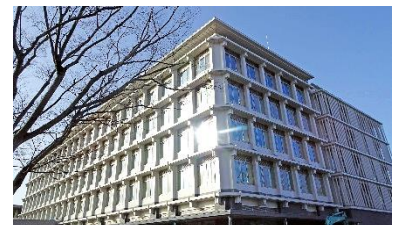
- Community Development Office → Community Development Division
- Tourism Planning Division → Tourism Exchange Division

New Division/Department/Office

- Cultural Sports Department
- New Fitness Center Management Promotion Office
- Credit Management Division
- Life Service Division
- Facility Management Promotion Office (Hikone Municipal Hospital)
- School ICT Promotion Division (Hikone Board of Education)

Division and Office to Be Abolished

- Premium Voucher Management Office
- Health and Physical Education Division



Inquiries: Hikone Human Resources Division
Tel: 0749-30-6106, Fax: 0749-22-1398

☆Spring National Traffic Safety Campaign: April 6 until 15

The Road Traffic Act says priority shall be given to pedestrians at a pedestrian crossing.

To lower the risk of traffic accidents, please be extra mindful of the following tips.

- If you drive through a crosswalk without the traffic light, ensure to see if there is anyone intending to cross a road. Please yield to pedestrians if you see anyone at a crosswalk.
- When you cross the road as a pedestrian, be sure to check both the right side and left side of the road and show your intention to cross the road to a driver/drivers.
- April 10 (Sat) is the day to aim for zero traffic fatalities across Japan.

Inquiries: Hikone Traffic Management Division
Tel: 0749-30-6134, Fax: 0749-24-5211

☆Notification of Special Child Allowance,

Special Benefits for the Challenged and Benefits for Children with Disabilities

• **Special Child Allowance**

This financial support is granted to eligible beneficiaries three times a year (April, August and December) and has the aim to promote children's welfare.

The Amount of Benefit: 52,500 JPY/month for Grade 1 Disabilities (Severe)

34,970 JPY/month for Grade 2 Disabilities (Medium)

Eligibility: The Special Child Allowance is granted to parents or legal guardians if they are caring for a child who holds a disability certificate (grade 1-3) or special education certificate (grade A1-B1) "at home", not a child in a facility for those with special needs.

• **Special Benefits for the Challenged and Benefits for Children with Disabilities**

The amounts of "Benefits for the Challenged" and "Benefits for Children with Disabilities" are granted to the eligible four times a year (February, May, August and November) in the hopes of easing their financial burden.

The Amount of Benefits: 27,350 JPY/month for Special Benefits for the Challenged

14,880 JPY/month for Benefits for Children with Disabilities

Eligibility: "The Special Benefits for the Challenged" are provided for the persons at the age of 20 or more with severe cases of physical or mental disabilities who require constant care. (Please note that "bed-ridden persons", "those who cannot perform day-to-day activities due to intellectual/physical disabilities" and "people who are being taken care of at an assisted living facility or are going to be hospitalized for more than 3 months" are not included. It is available regardless of whether or not the applicant has a disability certificate or is using an adult daycare service.)

"The Benefits for Children with Disabilities" are provided for the persons under 20 years old with severe cases of physical or mental disabilities, who require constant care. (Please note that persons who are going to be taken care of at a facility for children with disabilities are not included, and it is available regardless of whether or not the applicant has a disability certificate.)

How to Apply for the Benefits

Please submit an applicant's medical certificate or show an applicant's disability handbook along with required documents to the Hikone Challenged People's Welfare Division (Hikone Welfare Center). All forms required for the application of each benefit are available at the said division. •

Inquiries: Hikone Challenged People's Welfare Division Tel: 0749-27-9981, Fax: 0749-30-9231

☆Financial Aid Program for School Fees

Financial help will be awarded to parents who have difficulty paying essential school fees, such as school supplies and school lunches, under the Financial Aid Program called "Shugaku Enjyo Seido" in Japanese.

Conditions to Apply for the Aid Program

An applicant and his/her school-age child must be registered as a resident of Hikone and needs to meet one of the following conditions.

- Being untaxed or receiving a tax reduction for Hikone's resident tax.
- A recipient of the Childrearing Support Allowance *Not *Jidouteate* (Child Allowance).
- His/her Livelihood Protection Law eligibility has been temporarily stopped or terminated.
- Special approval to apply for the aid program has been granted by the Hikone Board of Education.

Details of What the Aid Program Covers

School supply fees, school lunches, travel expenses for a school graduation trip, etc.

How to Apply

Complete application forms available at the school your child goes to or the Hikone Board of Education (2F, Civic Hall).

Then submit the completed forms to the school.

- An applicant's My Number Card will be required if you apply for the first time, or your child started school in FY 2021.
- The aid will start only from the following month after your application is accepted.
- If the date of your application falls between the 16th and the end of the month, payment of the aid will start the following month.

Inquiries: Hikone Board of Education TEL: 0749-24-7973, FAX: 0749-23-9190

★Notice from the Hikone Municipal Hospital “Gynaecology”

From April 8, outpatient medical treatment of gynaecology will be resumed.

Date & Time: Every Thursday, 8:00 – 11:00

Inquiries: Hikone Municipal Hospital, the Department of Obstetrics and Gynaecology (block no. 6)

Tel: 0749-22-6050 (extension: 2602), Fax: 0749-26-0754, E-mail: info@municipal-hp.hikone.shiga

Consultation

	Date & Time	Contact Information	Tel
Law Consultation	April 23 (Fri) 13:00 ~ 16:00 ※5500 yen per consultation (reservation possible from April 14)	Community Relations Division (AL PLAZA Hikone 3F)	0749-30-6117
Vacant House Telephone Consultation	Every Mon ~ Fri 10:00 ~ 18:00	Akiya Bank Secretariat	0749-23-2123
Medical Consultation and Working Consultation for Cancer Patients	Every Mon ~ Fri 9:00 ~ 16:00 (Reservation Priority)	Municipal Hospital Cancer Support Center	0749-22-6050
Child・Family Consultation	Every Mon ~ Fri 8:30 ~ 17:15	Consultation Room for Children (Welfare centre)	0749-23-7838
Developmental Disorder Consultation	Every Mon ~ Fri ①8:30 ~ 12:00 ②13:00 ~ 17:15 (by reservation)	Development Support Division (Hirata-cho)	0749-26-8282
Language Consultation	Every Mon ~ Fri ①8:30 ~ 12:00 ②13:00 ~ 17:15 (by reservation)		
Human Rights Consultation by Foreign Languages	Every Mon ~ Fri 9:00 ~ 17:00		0570-090-911
Bullying Consultation / Hot Line	Every Mon ~ Fri 9:00 ~ 17:00	School Support ・ Human Rights ・ Bullying Measures Division	0749-24-7977
General Consultation for Children & Youth (social withdrawal problem, etc.)	Every Mon ~ Fri ①10:00 ~ 12:00 ②13:00 ~ 17:00	Child & Youth Consultation Center (Welfare center)	0749-47-3001
Consumer Life Consultation	Every Mon ~ Fri ①9:00 ~ 12:00 ②13:00 ~ 16:15	Hikone Living Environment Division	0749-30-6144
Traffic Accident Consultation	Every Tue & Thurs ①9:00 ~ 12:00 ②13:00 ~ 16:00	Traffic Accident Consultation Center Hikone Branch	0749-27-2230
Shinpaigoto Consultation	Every Wed & Fri ①10:00 ~ 12:00 ②13:00 ~ 16:00	Hikone Council of Social Welfare	0749-22-0294

※All offices closed on holidays

Information from the Hikone Health Promotion Division
Tel: 0749-24-0816, Fax: 0749-24-5870

★April and May Infant Check-ups

We will restart the Infant check-ups for all Target Age Groups from April 2021.

Location: Kusunoki Center (Hassaka-cho)

Reception Hours: Please visit the official website of Hikone or get in touch with the Hikone Health Promotion Division to know what time reception hours will start.

April

Target Age Group	Date	
Four Months Old	20 (Tue)	Born between Dec 1, 2020 and Dec 15, 2020
	27 (Tue)	Born between Dec 16, 2020 and Dec 31, 2020
Ten Months Old	14 (Wed)	Born between June 1, 2020 and June 17, 2020
	28 (Wed)	Born between June 18, 2020 and June 30, 2020
One and 1/2 Years Old	16 (Fri)	Born between Sep 1, 2019 and Sep 12, 2019
	23 (Fri)	Born between Sep 13, 2019 and Sep 24, 2019
Two and 1/2 Years Old	15 (Thu)	Born between Sep 1, 2018 and Sep13, 2018
	22 (Thu)	Born between Sep 14, 2018 and Sep 26, 2018
Three and 1/2Years Old	12 (Mon)	Born between Sep 1, 2017 and Sep 11, 2017
	19 (Mon)	Born between Sep 12, 2017 and Sep 23, 2017

May

Target Age Group	Date	
Four Months Old	18 (Tue)	Born between Jan 1, 2021 and Jan 16, 2021
	25 (Tue)	Born between Jan 17, 2021 and Jan 31, 2021
Ten Months Old	12 (Wed)	Born between July 1, 2020 and July 11, 2020
	19 (Wed)	Born between July 12, 2020 and July 24, 2020
One and 1/2 Years Old	14 (Fri)	Born between Sep 25, 2019 and Oct 6, 2019
	21 (Fri)	Born between Oct 7, 2019 and Oct 20, 2019
Two and 1/2 Years Old	13 (Thu)	Born between Sept 27, 2018 and Oct 13, 2018
	20 (Thu)	Born between Oct 14, 2018 and Oct 28, 2018
Three and 1/2 Years Old	17 (Mon)	Born between Sept 24, 2017 and Oct 7, 2017
	24 (Mon)	Born between Oct 8, 2017 and Oct 21, 2017

Notes

*No reminder will be mailed to your address.

*Please bring a toothbrush and a face towel for infant check-ups for 1 and 1/2 years old, and 3 and 1/2 years old.

*For the 3 and 1/2 years old check-up, please bring your child's first morning urine sample stored in a sanitized container.

*On the day of an infant check, please take the body temperature of your baby and anyone who accompanies him/her
 If you suspect that your child is sick, please contact the Health Promotion Division.

★Individual Consultation for Parents/Guardians of Infants, Toddlers and Pre-K Children

Day and Time: April 26 (Mon) 9:30 -11:00

Location: *Kusunoki* Center

Contents: Concerns about childrearing, weaning, etc.

Contact: Hikone Health Promotion Division, 0749-24-0816

*Please make a reservation via phone from April 1 (Thu).

★Breast Cancer Screening and Uterine Cancer Screening

《Breast Cancer Screening Test》

Eligibility: Women aged 40 and over as of March 31 2022 who live in Hikone city

Time limit: March 31 (Thurs) 2022

* Medical consultation and 2 way-mammography check for 40 – 49 year-olds.

* Medical consultation and 1 way-mammography check for 50 year-olds and over

How to take the medical examination

1. Please make an appointment at a medical institution.
2. Please go to a medical institution with the checkup fee (500 yen) and ID card.

Hospital	Telephone	Reservation
Hikone Municipal Hospital Checkup Center (Hassaka-cho)	0749-22-6058	Necessary
Toyosato Hospital (Inukami-gun)	0749-35-3001	
KKC wellness Hikone physical checkup Clinic	050-3535-5993	

※For more details, please call at 0749-24-0816 (Hikone Health Promotion Div.).

《Uterine Cancer Screening Test》

Eligibility: Women aged 20 over as of March 31 2022 who live in Hikone

Date: Until March 31 (Thu) 2022

Fee: ¥500

Please go to the following clinic directly with the check-up fee (500 yen) and ID card

Some clinics might require a reservation .Please inquire at the clinic for more information.

Hospital/Clinic	Reservation	Hospital/Clinic	Reservation
Adachi Lady's Clinic (Sawa-cho) Tel: 0749-22-2155	Not necessary	Hayashi Fujin Clinic (Take-ga-hana-cho) Tel: 0749-26-0528	Not necessary
Jinno Lady's Clinic (Chuo-cho) Tel: 0749-22-6216	Not necessary	Yamashita Clinic (Nagasone-cho) Tel: 0749-24-5290	Necessary
Jinno Lady's Clinic Alice (Hassaka-cho) Tel: 0749- 29-9025	Not necessary	Hikone Chuo Hospital (Nishiima-cho) Tel: 0749-23-1211	Not necessary

Jinno Lady's Clinic Sophia (Kawasebaba-cho) Tel: 0749- 25-5566	Not necessary	Hikone Municipal Hospital (Hassaka-cho) Tel: 0749- 22-6058	Necessary
KKC wellness Hikone physical check-up Clinic (Ekihigashi-cho) Tel: 050-3535-5993	Necessary		

※Once every two years for breast and uterine cancer check-up.

Those who have checked for breast and uterine cancer from April 1 2020 to March 31 2021 cannot have a check-up.

Those who have a Hikone-issued free coupon this fiscal year are eligible for it even if they had a check-up last year.

The check-up is available not only at the above-mentioned clinics but at any OB/GYN clinics in Shiga prefecture.

The cancer screening fee for the following people will be free.

1. A person from a household with exemption from the municipal/prefectural inhabitant tax.
A certificate of exemption from personal payment is required.
Please bring your name seal and apply for it at the Health Promotion Division by the day before your check-up.
2. A person from a household on the *Seikatsu Hogo* (Public Assistance for Livelihood Protection) Welfare.
A certificate proving you are living on this *Seikatsu Hogo* welfare program is required.
Please be sure to bring your name seal with you and apply for it at the Hikone Social Welfare Division.
3. Persons aged from 65 to 69 with a designated level of disability, who are enrolled in *Kouki Koureisha Iryouseido* (Medical Care System for Senior Citizens). Please bring your *Kouki Koureisha Iryouseido* card/certificate on the day of your cancer screening test.
4. Those who have a free coupon.
5. Those who are aged 70 years old or older on the day of their cancer screening test.

※Avoid having the uterine cancer check-up during your menstrual period

※Avoid having the breast cancer check-up when you have a symptom of irregular bleeding

※This breast cancer check-up is unsuitable for those who are pregnant, nursing, or have had a pacemaker inserted or have had breast enlargement surgery.

Inquiries: Hikone Health Promotion Division Tel: 0749-24-0816, Fax: 0749-24-5870