

広報ひこね (英語版)

Community Newsletter

KOHO HIKONE

January 2024



- Expansion of Welfare Medical Subsidy (P. 2)
- Do You Have To File A Tax Return? (P. 3, 4)
- Vacancies of City-Run Apartments (P.5)
- Reservation System For Child Check-ups (P.8)



(Hikone English Facebook Page)



(Official Hikone Website)

Contact Us	Telephone Number
Hikone City Hall	0749-22-1411 (Switch Board)
Human Rights Policy Division (To Speak to Our English Interpreter, Please Call the Number on the Right.)	0749-30-6113
FACEBOOK	http://www.facebook.com/hikone.eng

You can talk to our English interpreter via phone at the given number above or in person at the Hikone city hall.

This English Version of *Koho Hikone* Is Issued Monthly.

This Foreign-Language Community Newsletter Is Available At:

- Hikone Fukushi Centre
- Hikone Bunka Plaza
- Hikone City Library
- Hikone City Hall 1F
- AEON TOWN Hikone
- Nakachiku Kominkan
- Shiga Bank (Ohyabu Branch)
- “Gyomuyou Super” (Toga-cho)
- Beisia Hikone
- Mega Center TRAIAL Hikone
- Mega Don Quijote Toyosato
- Inaechiku Kominkan
- Hikone City Hospital

Interpreting Services (Available in English, Portuguese, Chinese, Vietnamese)

Onsite Foreign-Language Interpreting Services Are Available At The Hikone City Hall!

Please say “*eigo tsuuyaku onegai shimasu*” at the information desk of the city hall.

“えいご つうやく おねがいます”

City Hall Opening Hours: Weekdays between 8:30 a.m. and 5:15 p.m.

*Please note that the availability of our English interpreter is subject to change.


(Facebook) <http://www.facebook.com/hikone.eng>



***Please Contact Each School Before You Attend.**

Japanese Language Classes in Hikone

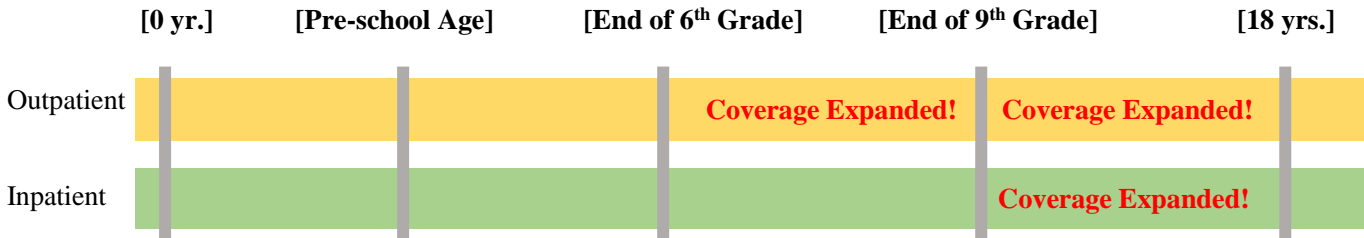


Day	Time	Location	Organization Name	Cost
Wednesday	7:00 p.m. to 8:30 p.m.	Kokusai Kouryu SALON	Hikone International Friendship Association Tel: (0749)-22-5931 E-mail: hikone-il@za.ztv.ne.jp	2,000 yen (Total 10 Classes) <u>*Ticket System</u>
Friday	2:00 p.m. to 3:30 p.m.		*Japanese classes we offer are suitable for those who have never studied Japanese before and beginners. <u>*To check our opening schedule, please scan the QR code on the left or contact us by phone or email directly.</u>	
Saturday	2:00 p.m. to 4:00 p.m.	Naka-chiku Kouminkan	Hikone Kokusai Kouryu-kai VOICE Katsurada-San Tel: 090-5156-6916	100 yen per lesson
Monday to Friday *closed on holidays	① 9:30 a.m. to 10:50 a.m. ② 11:00 a.m. to 12:20 p.m. ③ 1:30 p.m. to 2:50 p.m. ④ 3:00 p.m. to 4:20 p.m. ⑤ Online Classes	Innovation Office NAYASHICHI, Shiro-machi 1, 7-16	Smile Mizuno-San Tel: 070-5661-7345	200 yen per lesson
1 st , 3 rd , 4 th Saturday	10:00 a.m. to 11:30 a.m.	Higashi Chiku Community Center	Hikone UNESCO Association, Japanese Language Class “JUMP” Learning Japanese as a foreign language educational support for children Tel: 090-2384-9760	Free

Information

☆Expansion of Welfare Medical Subsidy Program for High-School-Aged Children

Starting April this year, both inpatient and outpatient medical expenses are expected to be covered by the Welfare Medical Subsidy Program for high-school aged children (to be exact, until first March 31 after turning 18 years old).



Parents/Guardians Whose Children Fall Into One Of The Following Age Groups Are Required To Apply

1. New 1st Graders
(Children born between 2017 April 2 and 2018 April 1)
2. New 8th and 9th Graders
(Children born between 2009 April 2 and 2011 April 1)
3. New 10th, 11th and 12th Graders (High-School-Aged)
(Children born between 2006 April 2 and 2009 April 1)

Parents /Guardians Whose Children Fall Into The Following Age Group Are NOT Required To Apply

New 2nd Graders to New 7th Graders
(Children born between 2011 April 2 and 2017 April 1)



[Important Points]

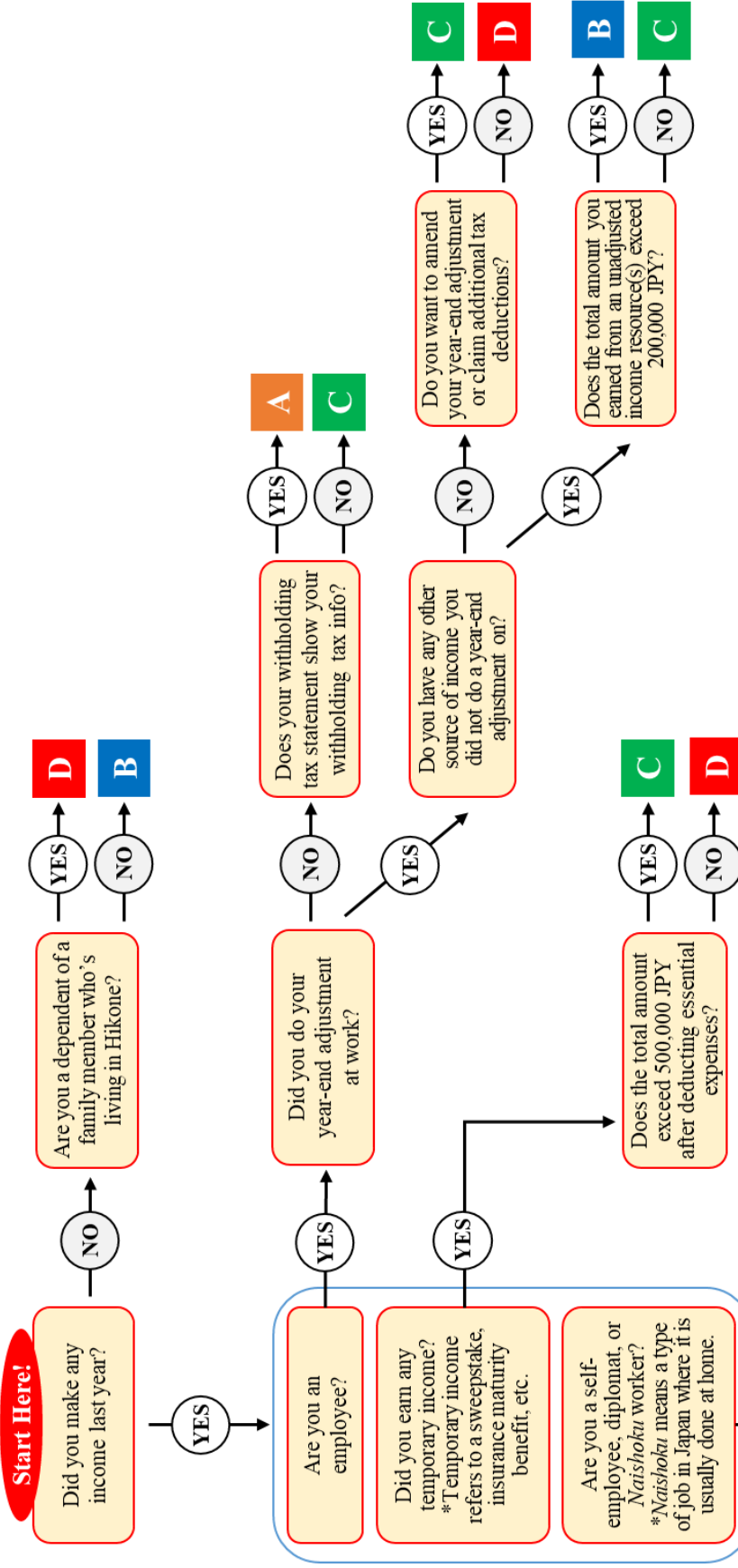
*Application forms will be mailed to those who are required to apply to receive a certificate of the Welfare Subsidy Program around late January.

*A certificate of the Welfare Subsidy Program will be mailed to parents/guardians whose children qualify for this coverage expansion.

*For more details, please visit the official website of Hikone City by scanning the QR code.

Inquiries: Hikone Insurance and Pension Division, Tel:0749-30-6136

Do You Have To File A Tax Return For Your Prefectural/Municipal Inhabitant Taxes?

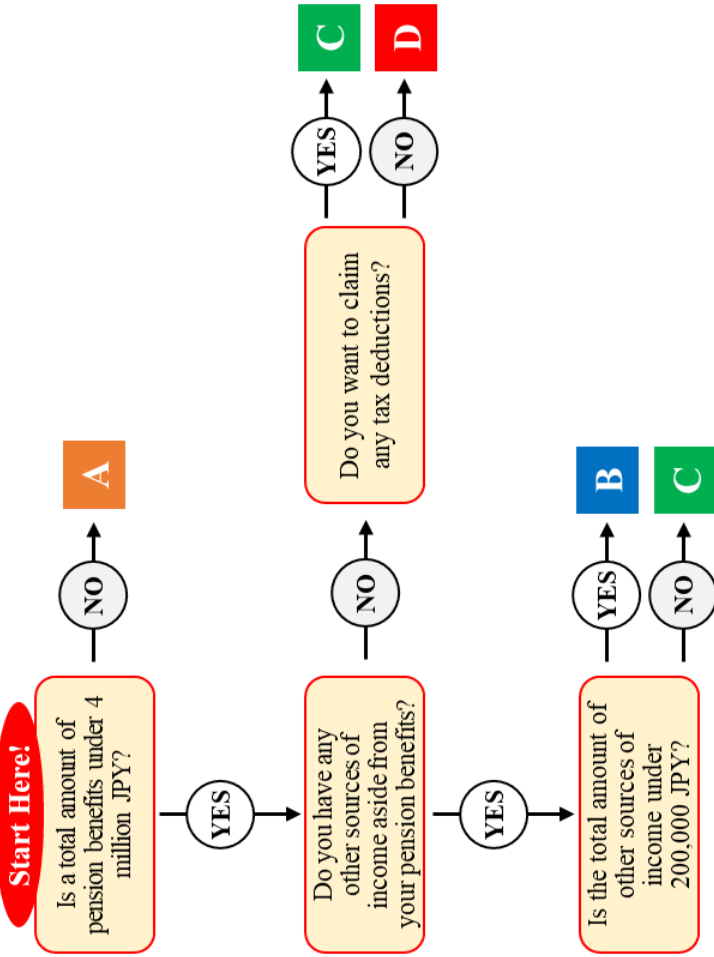


- A** You are obligated to file an income tax return. (*1)
- B** You are obligated to file your prefectural/municipal inhabitant tax.
- C** You are obligated to file either an income or a prefectural/municipal inhabitant tax return. (*2)
- D** There is no need for you to do your taxes. *To receive public services, you may be required to do so.

*1: Please be careful mixing up your gross income and net income. *2: Once you file your income tax return, there will be no need to file a prefectural inhabitant tax return.

Do You Have To File A Tax Return For Your Prefectural/Municipal Inhabitant Taxes?

Note That This Flowchart Is For Pensioners!



A You are obligated to file an income tax return. (*1)

B You are obligated to file your prefectural/municipal inhabitant tax.

C You are obligated to file either an income or a prefectural/municipal inhabitant tax return. (*2)

D There is no need for you to do your taxes. *To receive public services, you may be required to do so.

*1: Please be careful mixing up your gross income and net income.

*2: Once you file your income tax return, there will be no need to file a prefectural inhabitant tax return.

☆Face Identification In Place Of Passwords For My Number Cards

The option of setting up facial recognition to My Number cards in place of passwords is now available. This new face ID feature is accessible not just for those who are currently thinking of applying for their own My Number cards but also for those who already have their own cards.

[Where To Set Up Face ID To A My Number Card]

Hikone City Hall, Fukushi (Welfare) Center, Inae Branch Office

[Important Points]

- Face ID can be activated upon using your My Number card as a health insurance card and your photo identification.
- Once your face ID is set, you will not be able to use the issuance service of government-issued certificates at a convenience store.

Inquiries: Hikone Life Service Division, Tel: 0749-30-6151

☆Sunday Issuance of My Number Cards

Date: January 14 (Sun)

Time: 9:30AM – 12:30 PM

Location: Hikone City Hall, 1F

Inquiries: Hikone Life Service Division, Tel: 0749-30-6151

☆Vacancies of City-Run Apartments (Affordable Housing)

[A List of Available Apartments]

- Higashinonami-cho Danchi: Room No. 16 (suitable for families)
- Daito Danchi 2nd Building: Room No. 309 (suitable for families)
- Serikawa Danchi 1st Building: Room No. 104 (suitable for single-person households)
- Oakamachi Danchi: Room No. 12 (suitable for single-parent households)

[Important Notes]

- To see if you qualify for city-run apartments, please directly visit the Hikone Housing Division.
- The application period is from January 19 (Fri) to 31 (Wed), and only an applicant him/herself or an applicant's family member who will be moving into a city-run apartment together are allowed to apply.
- Eligible tenants will be allowed to move into one of the above apartments from late March.

Inquiries: Hikone Housing Division: Tel: 0749-30-6123

☆Temporary City Library Closure Due To Its Annual Maintenance

Please note that the Hikone City library is scheduled to be closed from February 8 (Thu) through 14 (Wed) due to its annual maintenance. As part of preparations for this up-coming maintenance, the library is expected to limit a number of books each library user can check out from 15 to 10 between January 26 (Fri) and February 7 (Wed).

During the period of the library's closure, you can return borrowed books by dropping them off into return boxes available at the main entrance of the library.

Inquiries: Hikone City Library, Tel:0749-22-0649

☆Minimum Hourly Wage Hike in Shiga

[Minimum Hourly Wage in Shiga Prefecture as of December 2023]

- 967 yen

[Minimum Hourly Wage by Industry Sector]

*The following minimum wage hikes are expected to go into effect in January 2024.

- Ceramics, Stone and Clay Products: 1,000 yen
- Electrical Device/Equipment, Precision Device/Instrument: 1,003 yen
- Vehicles, Automobile Parts and Accessories: 1,016 yen
- General Machinery and Equipment: 1,013 yen

Inquiries: Hikone Labor Standards Inspection Office, Tel:0749-22-0654

Event

☆Second-Hand School Supplies Drive

Donated school supplies necessary for elementary and junior-high school will be provided to families who need them.

For more information, please scan the QR code or get in touch with the organization hosting this event via email.

Date and Time: January 20 (Sat), 12:30 PM to 2:30 PM

Location: Hikone Bunka Plaza, Echo Hall Lobby

Email Address: hodohodo.hikone@gmail.com



☆Hikone Morning Market

January 21 (Sun) 8:00 AM – Noon

Location: Osue-Cho, Gokoku Shrine

With the three key elements of “Food Safety”, “Local Production Local Consumption” and “Handmade”, you can find and buy locally grown produce, tofu, fish dishes, handmade accessories and more at Hikone Morning Market!

Consultation

Legal Consultation	January 26 (Fri) 13:00 – 16:00 ※5500 yen per consultation (Reservations available from Jan 17)	Hikone Community Development Division	0749-30-6117
<i>Akiya Bank</i> (Vacant House) Telephone Consultation	Mon – Fri 10:00 – 18:00	<i>Akiya Bank</i> Office	0749-23-2123
Consultation for Recovery from Cancer	Mon – Fri 9:00 – 16:00 (Priority given to people who have an appointment)	Municipal Hospital Cancer Support Center	0749-22-6050
Consultation for Working During Cancer Treatment	Support for Finding a Job January 10 (Web), 13:30 –15:30 (Offered by reservation only) Support for Continuing to Work January 24 (Wed), 13:30 –15:30 (Offered by reservation only)		
Child and Family Consultation	Mon – Fri 8:30 – 17:15	Consultation Room for Children (Welfare Centre)	0749-23-7838
Child Development (Disability) Consultation	Mon – Fri ①8:30 – 17:15 (Offered by reservation only)	Development Support Division (<i>Hirata-cho</i>)	0749-26-8282
Language Development Consultation	Mon – Fri ①8:30 – 17:15 (Offered by reservation only)		
Human Rights Consultation in Foreign Languages	Mon – Fri 9:00 –17:00		0570-090-911
Bullying Consultation Hotline	Mon – Fri 9:00 – 17:00	School Support • Human Rights • Anti-Bullying Measures Division	0749-24-7977
General Consultation for Children and Youths (social withdrawal, etc.)	Mon – Fri 8:30 – 17:15	Child and Youth Consultation Desk (Hikone Welfare Centre)	0749-26-6880
Consumer Affairs Consultation	Mon – Fri ①9:00 – 12:00 ②13:00 – 16:15	Consumer Affairs Center	0749-30-6144
Road Accident Consultation	Tue & Thu ①9:00 – 12:00 ②13:00 – 16:00	Traffic Accident Consultation Center, Hikone Office	0749-27-2230

Information from the Hikone Health Promotion Division
Tel: 0749-24-0816, Fax: 0749-24-5870

★February Health Check-ups for Infants and Young Children

Location: Kusunoki Center (Hassaka-cho)

February

Target Age Group	Date	Eligibility
4 months olds	To have a 4-month-old baby checked, parents are required to do so at a medical facility. Please contact the Hikone Health Promotion Division for more details.	
10 months olds	7 (Wed)	Children born between April 1 and 19, 2023
	13 (Tue)	Children born between April 20 and 30, 2023
1 and ½ years olds	9 (Fri)	Children born between July 1 and 17, 2022
	16 (Fri)	Children born between July 18 and 31, 2022
2 and ½ years olds	15 (Thu)	Children born between July 1 and 15, 2021
	22 (Thu)	Children born between July 16 and 31, 2021
3 and ½ years olds	19 (Mon)	Children born between July 8 and July 17, 2020
	26 (Mon)	Children born between July 18 and August 3, 2020

Notes

- * No reminder will be mailed. Therefore, make sure to check further details on the website of Hikone City.
- * As a general rule, only one parent/guardian is permitted to accompany the baby/child during the check-up.
- * For 3 and a half years olds, a urine test will be conducted. For this, do not forget to take a urine sample on the morning of the checkup and bring it in a sanitized glass container, etc.

Inquiries: Hikone Health Promotion Division, Tel: 0749-24-0816

★New Reservation System Starts For Infant/Young Child Health Check-ups

Starting with April infant/young child health check-ups, parents/guardians are required to make a booking online via a mobile app called “Hikone Suku Suku App” that is available in multiple languages such as English, Portuguese and Vietnamese. Further details are expected to appear on the official website of Hikone City around the month of February.



Inquiries: Hikone Health Promotion Division, Tel:0749-24-0816

☆COVID-19 Vaccines (Publicly Funded) Information

Please note that COVID-19 vaccines that have been administered nationwide at no cost are expected to end on March 31 (Sun). If you are thinking of getting a primary series of the vaccines or a booster shot, please schedule your appointment at your earliest convenience. In order to receive a COVID-19 vaccine, a vaccine ticket is a must, and therefore, if you do not have or have lost your ticket, make sure to call the Hikone COVID-19 Appointment Center or apply online.

[Appointments of Booster Shots for People Over 12 Years Old]



- For the month of January: Currently Available
- For the month of February: Will Be Available on January 11 (Thu)

[How to Schedule an Appointment]

Please call the Hikone COVID-19 Appointment Center at 0120-152-811 between 8:30 and 5:00.
(Closed on weekends, national holidays and a year-end and New Year holiday period)