

広報ひこね（英語版）

Community Newsletter *KOHO HIKONE*

January 2025



- Information on Tax Return Season (P. 2 - 4)
- Minimum Hourly Wages in Shiga (P. 5)
- Applications for City-Run Affordable Housing (P. 6)
- Science Class for Kids (P. 7)



[Official Hikone Website] [New Facebook Page!]

Contact Info	Telephone Number
Hikone City Hall	0749-22-1411 (Switch Board)
Human Rights Policy Division (To Speak to Our English Interpreter, Please Call the Number on the Right.)	0749-30-6113
FACEBOOK	http://www.facebook.com/hikone.eng

You can talk to our English interpreter via phone at the given number above or in person at the Hikone city hall.

This English Version of *Koho Hikone* Is Issued Monthly.

This Foreign-Language Community Newsletter Is Available At:

- Hikone Fukushi Centre
- Hikone Bunka Plaza
- Hikone City Library
- Hikone City Hall (1F)
- AEON TOWN Hikone
- Nakachiku Kominkan
- Shiga Bank (Ohyabu Branch)
- “Gyomuyou Super” (Toga-cho)
- Beisia Hikone
- Inae-chiku Kominkan
- Mega Center TRAIAL Hikone
- Mega Don Quijote Toyosato
- Don Quijote Hikone
- Hikone City Hospital

Interpreting Services (Available in English, Portuguese, Chinese, and Vietnamese)

Onsite Foreign-Language Interpreting Services Are Available At The Hikone City Hall!

Please say “*eigo tsuuyaku onegai shimasu*” at the information desk of the city hall.

“えいご つうやく おねがいします”

City Hall Opening Schedule: Weekdays between 8:30 a.m. and 5:15 p.m.

*Please note that the availability of our English interpreter is subject to change.



***Please Contact Each School Before You Attend.**

Japanese Language Classes in Hikone



Day	Time	Location	Organization Name	Cost
Saturday	2:00 PM to 4:00 PM	Naka-chiku Community Center (Oyabu-cho, 2610)	Hikone Kokusai Kouryu-kai VOICE Katsurada-San Tel: 090-5156-6916	100 yen per lesson
Monday to Friday *Closed on holidays	① 9:30 AM to 10:50 AM ② 11:00 AM to 12:20 PM ③ 1:30 PM to 2:50 PM ④ 3:00 PM to 4:20 PM ⑤ Online Classes	Innovation Office Nayashichi (Shiro-machi 1-7-16)	SMILE Mizuno-San Tel: 070-5661-7345	200 yen per lesson
1 st , 3 rd , 4 th Saturday	10:00 AM to 11:30 AM	Higashi-chiku Community Center (Daito-cho 1-26)	Hikone UNESCO Association, Japanese Language Class “JUMP” Learning Japanese as a foreign language educational support for children Tel: 090-2384-9760	Free

General Information

Information on Tax Return Season for Prefectural and Municipal Inhabitant Taxes

The tax return season in Japan usually starts in mid-February and ends in mid-March. During this period, tax return sites can get quite busy. To minimize disruption and reduce wait times, the following sites will be open to accept tax return submissions before the start of this fiscal year's tax return season.

- Green Pia Hikone: January 28 (Tue), 9:00 AM – 12:00 PM, 1:00 PM – 3:00 PM
- Inae Branch Office of Hikone City Hall: January 31 (Fri), 9:00 AM – 12:00 PM, 1:00 PM – 3:00 PM
- Hikone City Hall: February 4 (Tue) to 7 (Fri), 9:00 AM – 12:00 PM, 1:00 PM – 3:00 PM

[Notes]

- Submission of your tax return will be accepted on a first-come, first-served basis.
- Depending on how quickly the above sites become packed, they may stop accepting tax return submissions earlier than scheduled.
- Those who had their registered address in Hikone as of January 1, 2025 only can do their taxes for prefectural and municipal inhabitant taxes during the tax return season.
- You can also file your taxes by mail by submitting your completed tax return form (a template is available online) along with the required documents.

[What to Submit along with a Tax Return Form]

- Your 2024 withholding tax slip, called 'Gensen Choshu' in Japanese, or all your pay slips for 2024.
- If you are running your own business, prepare your income and expenditure statement form.
- If you want to claim tax breaks for medical expenses, life insurance premiums, earthquake insurance, dependents, etc., be sure to prepare the necessary supporting documents

[Contact Information]

- If you have any questions about topics such as a tax break for home mortgage loans, seniors with disabilities, etc., please contact the Hikone Tax Division at 0749-30-6140.

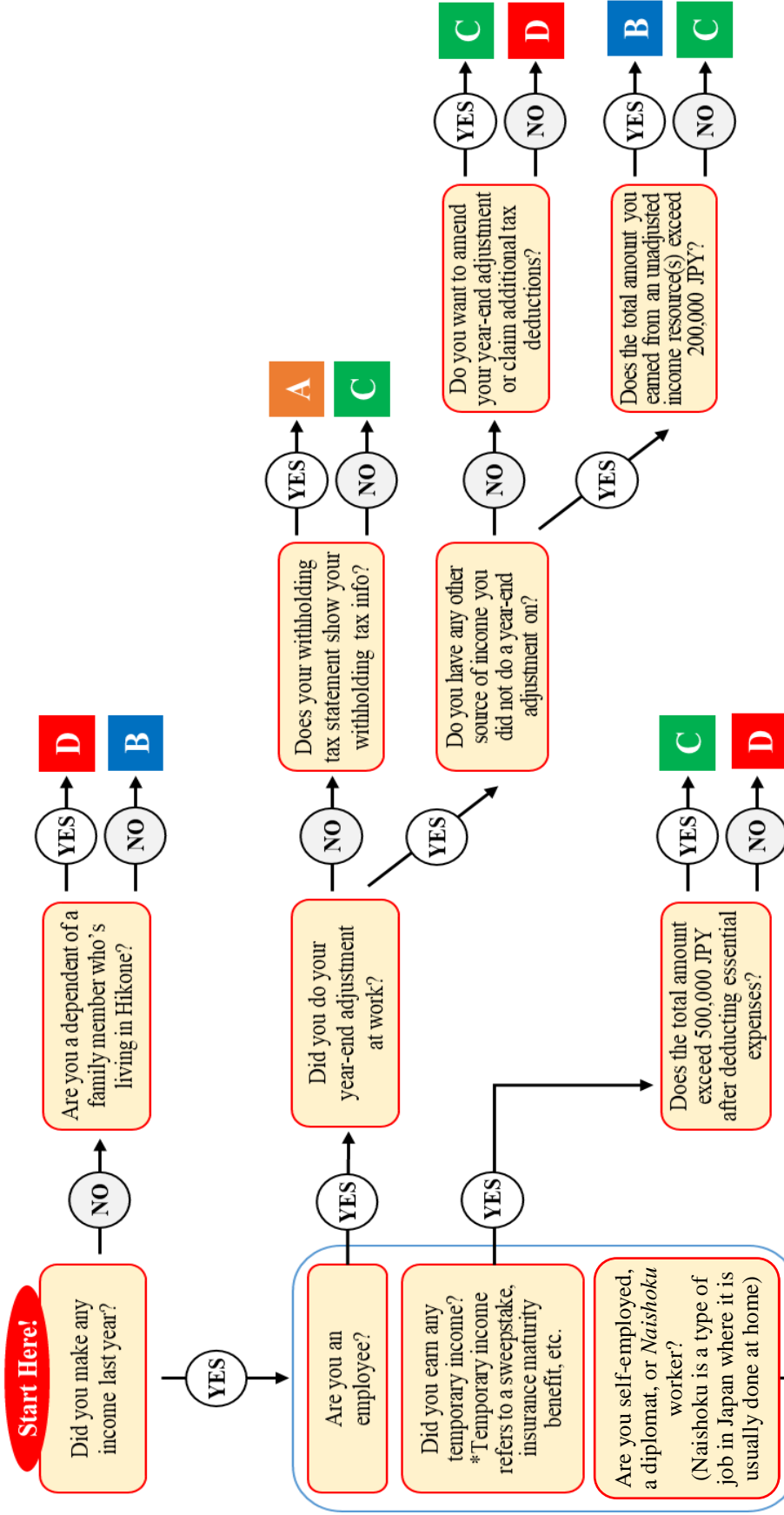
If any of the following conditions apply to your tax return, please visit the Hikone Chamber of Commerce and Industry (4th Floor) during the tax return period.

If You:

- Have Capital Gains (selling properties, investments, etc.)
- Want to Claim a Housing Loan Tax Credit.
- Want to Claim a Tax Deduction for Retrofitting a Home for an Earthquake, Accessibility or Energy Efficiency.
- Do Your Taxes for Your Own Business for the First Time.
- Need to a Blue-Sheet Tax Return Form (called Aoiro Shinsei in Japanese) or Need to Report a Large Amount of Business Revenues.
- Have Been Required by the Tax Agency to File Your Own Tax Return.
- Need to File a Tax Return on Behalf of Someone Who Passed Away Recently.
- Want to File Tax Returns for Previous Years (up to 5 years retrospectively)
- Are a Recipient of Inherited Pension Payments.
- Want to Claim a Tax Deduction for Miscellaneous Losses due to a Natural Disaster, etc.

Contact Information: Tax Agency of Japan, Tel. 0570-00-5901

Do You Have To File A Tax Return For Your Prefectural/Municipal Inhabitant Taxes?



A You are obligated to file an income tax return. (*1)

C You are obligated to file either an income or a prefectural/municipal inhabitant tax return. (*2)

B You are obligated to file your prefectural/municipal inhabitant tax.

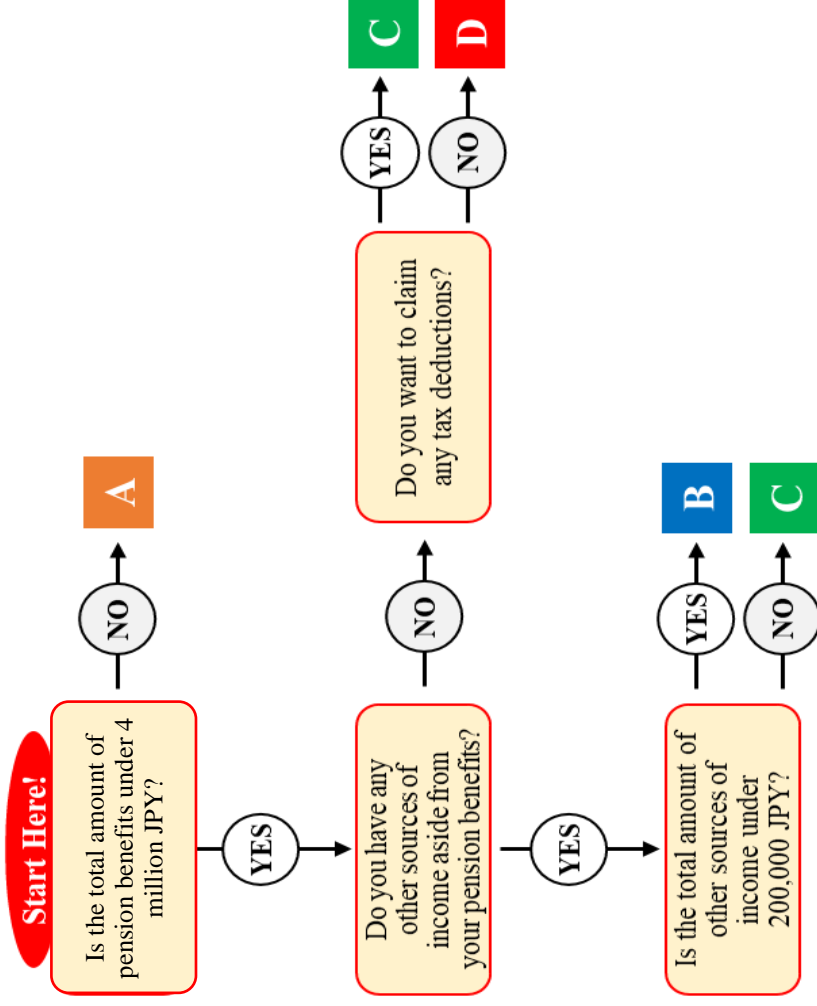
D There is no need for you to do your taxes. *To receive public services, you may be required to do so.

*1: Please be careful mixing up your gross income and net income.

*2: Once you file your income tax return, there will be no need to file a prefectural inhabitant tax return.

Do You Have To File A Tax Return For Your Prefectural/Municipal Inhabitant Taxes?

Note That This Flowchart Is For Pensioners!



A You are obligated to file an income tax return. (*1)

C You are obligated to file either an income or a prefectural/municipal inhabitant tax return. (*2)

B You are obligated to file your prefectural/municipal inhabitant tax.

D There is no need for you to do your taxes. *To receive public services, you may be required to do so.

*1: Please be careful mixing up your gross income and net income.

*2: Once you file your income tax return, there will be no need to file a prefectural inhabitant tax return.

Tax Deduction Program for Seniors

Those aged above 65 years or older may be able to claim tax deductions on their municipal and prefectural inhabitant taxes if they can meet both the following criteria.

[Criteria]

Those aged 65 years or older who:

- Reside in Hikone and their nursing care (grade 1 to 5) needs recognized by the government.
- Have been formally diagnosed with greater-than-moderate dementia or require constant care due to physical inability to go out and perform daily activities alone.

[How to Apply]

Please submit the designated application form, which is downloadable from the website of Hikone City.

If you submit the form by mail, instead of in person, please also include a photocopy of your nursing care certificate.

[Note]

After submitting your application, you will receive the results from the city in a couple of weeks.

If your application is accepted, please visit the National Tax Agency office or Hikone Tax Division.

Contact Information: Hikone Welfare Promotion Division for the Elderly, Tel. 0749-23-9660

Minimum Hourly Wages in Shiga

[Minimum Hourly Wage in Shiga Prefecture as of October 1 2024]

- 1,017 yen

[Minimum Hourly Wage by Industry Sector as of December 31, 2024].

- Ceramics, Stone and Clay Products: 1,046 yen
- Electrical Device/Equipment, Precision Device/Instrument: 1,050 yen
- Vehicles, Automobile Parts and Accessories: 1,062 yen
- General Machinery and Equipment: 1,060 yen

Contact Information: Hikone Labor Standards Inspection Office, Tel:0749-22-0654

Sunday Opening for My Number Card Procedures

Date and Time: January 11 (Sat), 9:30 -12:30

Location: 1F, Hikone City Hall

Contact Information: Hikone Life Service Division, Tel. 0749-30-6151

Changes to Hikone Kodomo Center's Closing Schedules (Effective April 1, 2025)

Please be notified that the Hikone Kodomo Center will be closed on Mondays in addition to its New Year holiday closure, starting on April 1, 2025. If a Monday falls on a national holiday or observed holiday, the center will remain open and be closed the following day.

Contact Information: Hikone Children and Youths Division, Tel. 0749-49-2251

Applications for City-Run Affordable Housing Begin

[Available City-Run Apartments]

- Inae Nishi Danchi, Room No. 207
- Daito Danchi Block 1, Room No. 415 (available for a family only)
- Okamachi Danchi, Room No. 9 (available for a family only)

[Application Period]

January 20 (Mon) until 31 (Fri)

*Applications must be filed in person to the relevant division by January 31.

[Important Notes]

- Eligibility criteria may vary from applicant to applicant. For specific details on whether you qualify for city-run affordable housing units, please contact the relevant division.
- Applications can be submitted either by the applicant themselves or by a family member who will be moving into the apartment if accepted.
- Please note that if accepted, you can expect to move into one of the apartments around late March, 2025.

Contact Information: Hikone Housing Division, Tel. 0749-30-6123

Collection of Small Rechargeable Batteries Starts in January!

Reports that lithium-ion batteries and small rechargeable batteries exploded and set dump trucks and recycling/garbage incineration facilities on fire have been on the rise across Japan. To prevent Lithium-ion battery explosions and the safety disposal of Lithium-ion batteries, the Hikone Garbage Incineration/Recycling Plant (Seisou Center) is set to collect small rechargeable batteries, starting in January 2025.

[Types of Batteries That Can Be Collected] *Swollen and deformed ones can also be collected.

- Nickel-cadmium Batteries
- Nickel-metal Hydride Batteries
- Lithium-ion Batteries



[Operating Hours of the Incineration/Recycling Plant]

- Monday to Friday except for holidays
- 9:00 AM to 12:00 PM, 1:00 PM to 4:15 PM
- Hikone, Nose-cho, 279-1

[Important Points]

- Do not take batteries out to your local drop-off site as regular garbage!!
If batteries are damaged or physically deformed, they could swell, explode and catch fire.
- Please cover the top and bottom of each used batteries with scotch tape to stop the flow of electric current.

Scotch Tape



Please Crush Plastic Bottles for Recycling!

*Effective 2025 January, the Hikone Garbage Incineration/Recycling Plant will start to collect crushed plastic bottles.

Why Crushing Plastic Bottles Can Be Helpful:

- Crushing bottles reduces their volume, which maximizes space in containers.
- As crushed plastic bottles take up less space, it improves efficiency in transportation.



Contact Information: Hikone Garbage Incineration/Recycling Plant: Tel. 0749-22-2734

Events and Activities

Science Class for Kids: Baking Bread with Electricity

Date and Time: January 18 (Sat), 10:00 – 11:30

Location: Hikone Kodomo Center

Target Age: Children in Elementary and Junior-high School

*Children in elementary school must be accompanied by their parents.

Capacity: 10 (first come, first served)

Fee: 300 yen per child

Application Period: January 4 to 13

*Please apply by phone or in person.

Tel: Kodomo Center, Tel. 0749-28-3645

Hikone Morning Market

January 19 (Sun) 8:00 AM – Noon

Location: Osue-Cho, Gokoku Shrine

With the three key elements of “Food Safety”, “Local Production Local Consumption” and “Handmade”, you can find and buy locally grown produce, tofu, fish dishes, handmade accessories, and more at Hikone Afternoon & Evening Market!

Consultation Services

Consultation Service	Schedule	Location	Telephone Number
Legal Consultation	January 24 (Fri) 13:00 – 16:00 *5500 yen per consultation *Reservations available from Jan 15.	Hikone Community Development Promotion Division	0749-30-6117
Akiya Bank (Vacant House) Telephone Consultation	Mon – Fri 10:00 – 18:00	Akiya Bank Office	0749-23-2123
Consultation for Recovery from Cancer	Mon – Fri 9:00 – 16:00 *Priority given to people who have an appointment.	Municipal Hospital Cancer Support Center	0749-22-6050
Consultation for Working During Cancer Treatment	Support for Finding a Job Jan 8 (Web), 13:30 – 15:30 *Offered by reservation only. Support for Continuing to Work Jan 15 (Wed), 13:30 – 15:30 *Offered by reservation only.		
Child Development (Disability) Consultation	Mon – Fri 8:30 – 17:15 *Offered by reservation only.	Development Support Division (Hirata-cho)	0749-26-8282
Language Development Consultation	Mon – Fri 8:30 – 17:15 *Offered by reservation only.		
Human Rights Consultation in Foreign Languages	Mon – Fri 9:00 – 17:00		0570-090-911
Consumer Affairs Consultation	Mon – Fri ① 9:00 – 12:00 ② 13:00 – 16:15	Consumer Affairs Center	0749-30-6144
Road Accident Consultation	Tue, Thu ① 9:00 – 12:00 ② 13:00 – 16:00	Traffic Accident Consultation Center, Hikone Office	0749-27-2230
Labour Law Consultation	Jan 24 (Fri) 6:30 PM – 8:00 PM *30 minutes per person *Reservation available from Jan 5.	Proceed Arena HIKONE (Koizumi-cho)	0749-30-9228

Health and Wellness Information

Hikone Health Promotion Div. Tel: 0749-24-0816, Fax: 0749-24-5870

February Health Check-ups for Infants, Toddlers and Preschoolers

Location: Kusunoki Center (Hassaka-cho)

Starting with the health check-ups for infants and young children in April 2024, you are required to make an appointment in advance via a mobile app “母子毛(Boshi Mo)”. If you come to the Kusunoki Center for your child’s check-up without an appointment, you may be told to return with an appointment.



February

Target Age Group	Date	Eligibility
10 months olds	12 (Wed)	Children born between 2024 March 16 and 31
	25 (Tue)	Children born between 2024 April 1 and 15
1 and ½ years olds	14 (Fri)	Children born in 2023 July.
	21 (Fri)	
2 and ½ years olds	13 (Thu)	Children born in 2022 July.
	20 (Thu)	
3 and ½ years olds	10 (Mon)	Children born in 2021 July.
	17 (Mon)	

Contact: Hikone Health Promotion Division, Tel: 0749-24-0816