

The city where everyone wants to live

広報 ひこね (英訳版)

Community
Newsletter,
Koho



No.1378-79

Date: July 1st, 2017

Published by:

Multicultural Coexistence

Human Rights Policy Division

Hikone City Hall

Tel:

0749-30-6113

Translated by:

VOICE Trans. Group

Proofread by:

Walter Klinger

Multicultural Coexistence

Edited by:

Human Rights Policy Division

HIKONE



2017.07

CONTENTS

- Information on Relocation of City Hall (P3)
- Special Section: National Disasters (P4,5)
- Summer Events in Hikone (P14)
- Natalia's Room (P24)



(Abridged Edition) <http://www.city.hikone.shiga.jp/english/index.html>

Name of Division	Telephone Number
Hikone City Hall (Representation)	0749-22-1411 (Main Number)
Hikone City Hall (JINKEN SEISAKU KA) 彦根市役所 (人権政策課)	0749-30-6113 (Direct Number) 直通番号

You can ask English Interpreter Service at the reception in Hikone City Hall.

Please say "English Interpreter please" in Japanese, "EIGO TSUUYAKU ONEGAI SHIMASU".

●“Koho Hikone” foreign language version by Hikone City is issued once every month.

This newsletter is available at

- | | |
|---------------------------|---|
| * Head JP Post Office | * Viva City 2F(near the children play ground) |
| * Yujin Yamazaki Hospital | * Shiga Bank (Oyabu Branch) |
| * Jinno Clinic | * “GyomuSuper Market”(Toga-cho) |
| * Hikone City Hall 1F | * BeisiaHikone |
| * AEON TOWN Hikone | * Hikone City Hospital |

Various Services

●Interpreters are available if you request this service at the reception desk.

Please say this Japanese sentence “*eigo-tsuuyaku-onegai-shimasu.*”

(It means “please get me an English interpreter”.) えいご つうやく おねがいします。

We might change the interpreter’s availability.

Hikone City Hall: Weekdays 8:30 a.m.to 12:00 p.m. 1:00 p.m. to 5:15 p.m.



Japanese Classes



Day	Hour	Location, Place	Organization Name to Contact	Cost
Wednesday 水曜日	7:00 p.m.to 8:30 p.m.	Shimin kaikan 市民会館	Hikoneshi Kokusai Kyoukai 彦根市国際協会 Tel (0749)-22-5931 (Not available from Dec. to Feb.)	100yen / lesson 100 円 / 1 回
Saturday 土曜日	2:00 p.m. to 4:00 p.m.	Naka-chiku Kouminkan 中地区公民館	Hikone Kokusai Kouryu-kai VOICE ひこね国際交流会 VOICE なえむらさん(NAEMURA) Tel 090-7118-5250	100yen / lesson 100 円 / 1 回
Sunday 日曜日	10:00 a.m. to 11:30 a.m.	Nishi-chiku Kouminkan 西地区公民館	Volunteer Nihongo Kyoushitsu SMILE ボランティア日本語教室スマイル よしおかさん (YOSHIOKA) Tel (0749)-24-7241	100yen / lesson 100 円 / 1 回
Monday~ Friday (Except for holidays) げつようび~きんようび	①9:30 a.m. to 10:50 a.m. ②11:00 a.m. to 12:20 p.m. ③1:30 p.m. to 2:50 p.m. ④3:00 p.m. to 4:20 p.m.	Innovation Office “NAYASHICHI” Shiro-machi1-7-16	“Smile s Satellite”(Weekday Class) NAYASHICHI Tel (0749)-29-5077 or みずのさん(MIZUNO) Tel 070-5661-7345	100yen / lesson 100 円 / 1 回

【Hikone International Lounge News】

Computer use is free in the Hikone International Lounge. We are waiting for your use!!

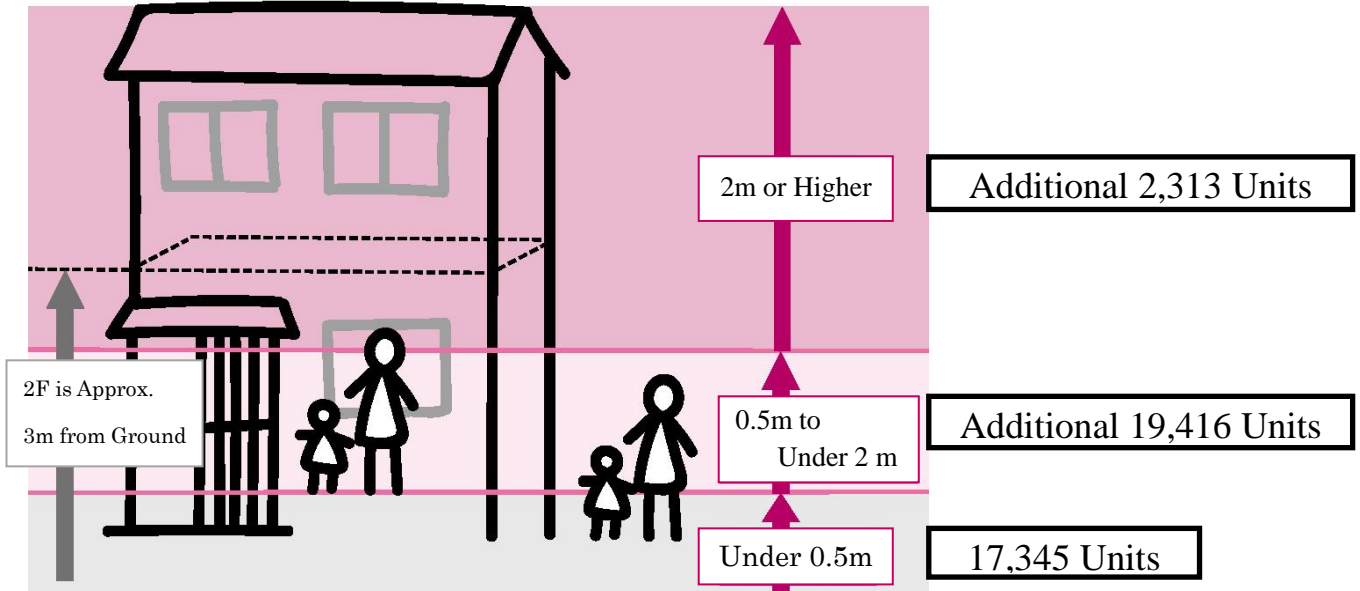
☆Information on Relocation of City Hall to Temporary Building

Moving Period		Between August 11th (Friday / Holiday) and 16th (Wednesday) Nota Bene: There are NO extra-hour customer-service desks on August 10th Thursday. (The city hall is open from 8:30 a.m. to 5:15 p.m. on that day)	
		Starting Date of Normal Business Hours at the Temporary Building	
		From August 14th (Mon)	From August 17th (Thu)
Floor	3rd Floor	Community Relations Division, Tax Division, Tax Collection Division Consumer Affairs & Environment Division, Consumer Affairs Center, Citizen's Affairs Division, NHI & Pension Division, Premiums Division Receipts and Expenditure	Agriculture, Forestry and Fisheries Division Regional Economy Promotion Division Tourism Planning Division Construction Management Division Roads and Rivers Division City Planning Division Architectural Administration Division Urban District Readjustment Division Traffic Administration Division Architectural Administration Division Agricultural Committee Office
	4th Floor		Planning Division Secretarial Policy Division National Athletic Meet Preparation Division General Affairs Department Public Property Administration Office Human Resources Department Finance Division Human Rights Policy Division Temporary Benefits Control Office Assembly Management Office Election Administration Control Office
Others		<ul style="list-style-type: none"> ● As for the branch offices and Welfare Center, they are open as usual. ● There are some departments moving to the Chuou-cho temporary building and annex of the city hall of Hikone. 	

☆Special Section: Preparation for Natural Disasters

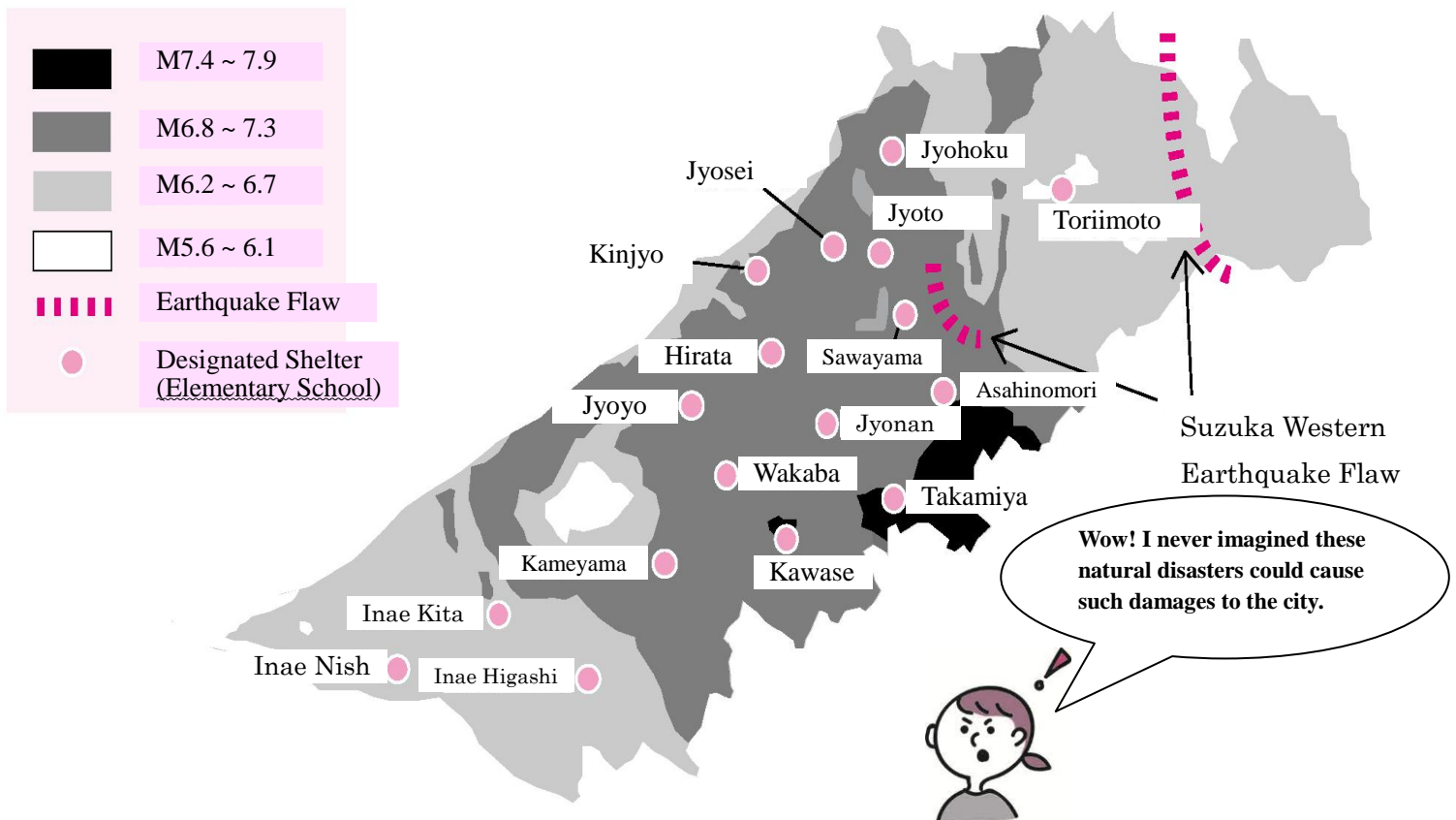
●Estimated Damages of Storms & Floods

When a 100-year torrential rain hits the city, on the assumption that the 1st class rivers: Echi River, Uso River, Inukami River and Seri River, small rivers and waterways burst the banks and started to overflow, it is estimated that approximately 39,000 housing units in Hikone will be submerged under the water,



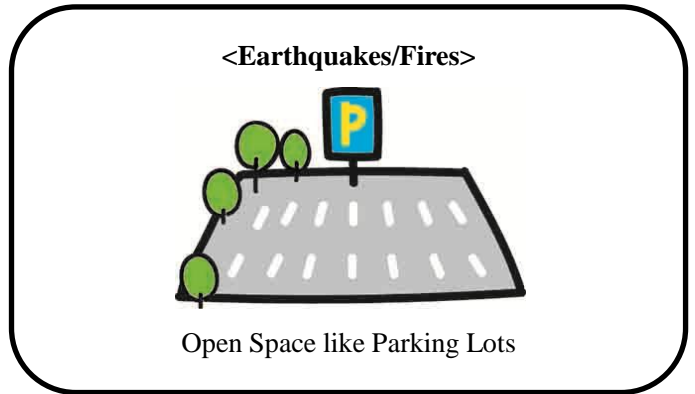
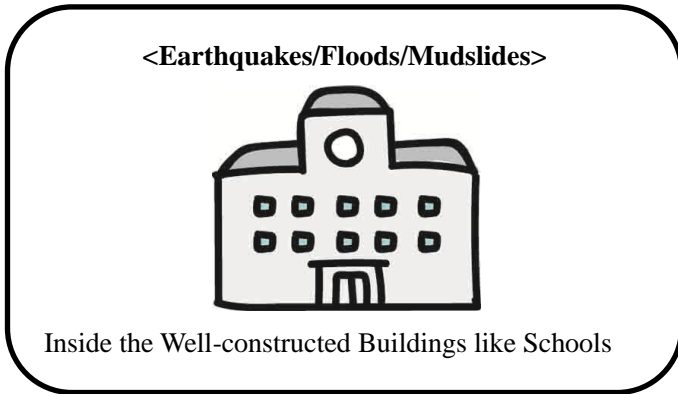
*Estimated Flooded Housing Units by Water Levels

●Estimated Damages of Earthquakes



●Evacuation Shelters

When there is a high chance of a natural disaster (flooding, mudslide, Earthquake, etc.), and you need to take a shelter, the following are the places to go to.



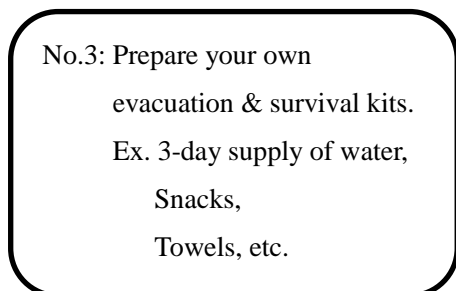
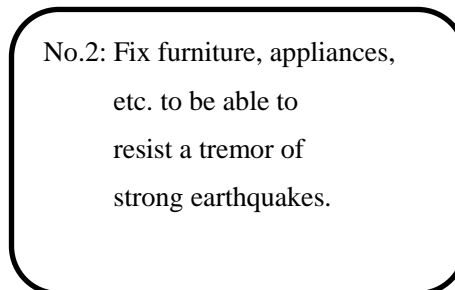
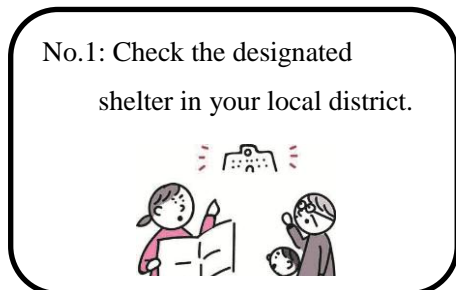
●Designated Shelters

When a shelter life is expected to become a longer period of time than expected, places like a local school is appointed to provide the evacuees with necessities as well as to serve as an evacuation shelter.

●Special Evacuation Shelters for the Elderly and People in Special Need

When a shelter life is expected to become a longer period of time than expected, private welfare facilities that signed a cooperation agreement with the city hall will be opened as a special evacuation shelter for the elder and disabled residents who are especially in need for special treatment. For further information, please go and check the website of Hikone City.

●Things You Can Do for Disaster Prevention Measures from Today



● Checking How to Obtain Emergency Information

The city has the emergency information system through the radio, e-mail, its website and other media to swiftly provide accurate and latest information. For more details, please check the “Living Guide in Hikone”.

INFORMATION

☆Information from the City Sanitation Center

1, Garbage Collection on Holidays

The City Sanitation Center collects garbage on August 11th (Fri) as normal. However, note that we will not accept any type of garbage directly brought into the center that day.

- For more information, please take a look at “Garbage Collection Calendar”.
- Please take out the household garbage at the designated area in your district in time for the collection.

2, Changing a location of a garbage collection box and setting up a new collection box.

Relocating and discarding the garbage collection boxes that residents use to manage their household waste require advance notice. In addition, when a residents’ association wants to set up or update a collection box, there is a subsidy system. Please inquire further details from the City Sanitation Center.

Inquiries: City Sanitation Center

TEL. 0749-22-2734

☆Do You Know the “Help Mark” ?

This Help Mark is a symbol that informs others of the presence of persons with prosthetics, artificial joints, internal diseases, etc. who are not immediately noticeable as being disabled at first glance. The “Help Mark” is available to anyone who needs it free of charge at the customer-service desk of Disability Welfare Division in Hikone City.



Inquiries: Municipal Disability Welfare Division

TEL. 0749-27-9981, FAX. 0749-26-1767

Prefectural Disability Welfare Division

TEL. 077-528-3541, FAX. 077-528-4853

**☆Please Give Your Opinions or
Views about Our Municipal Government**

Hikone-shi has made a system to listen to opinions or views about the municipal government. Please give your opinions or views on the policies or the projects of our municipal government.

※We reply by document and telephone as much as possible

※It may take one month to receive an answer

※In case of anonymity, no reply will be sent

※Personal information is managed appropriately

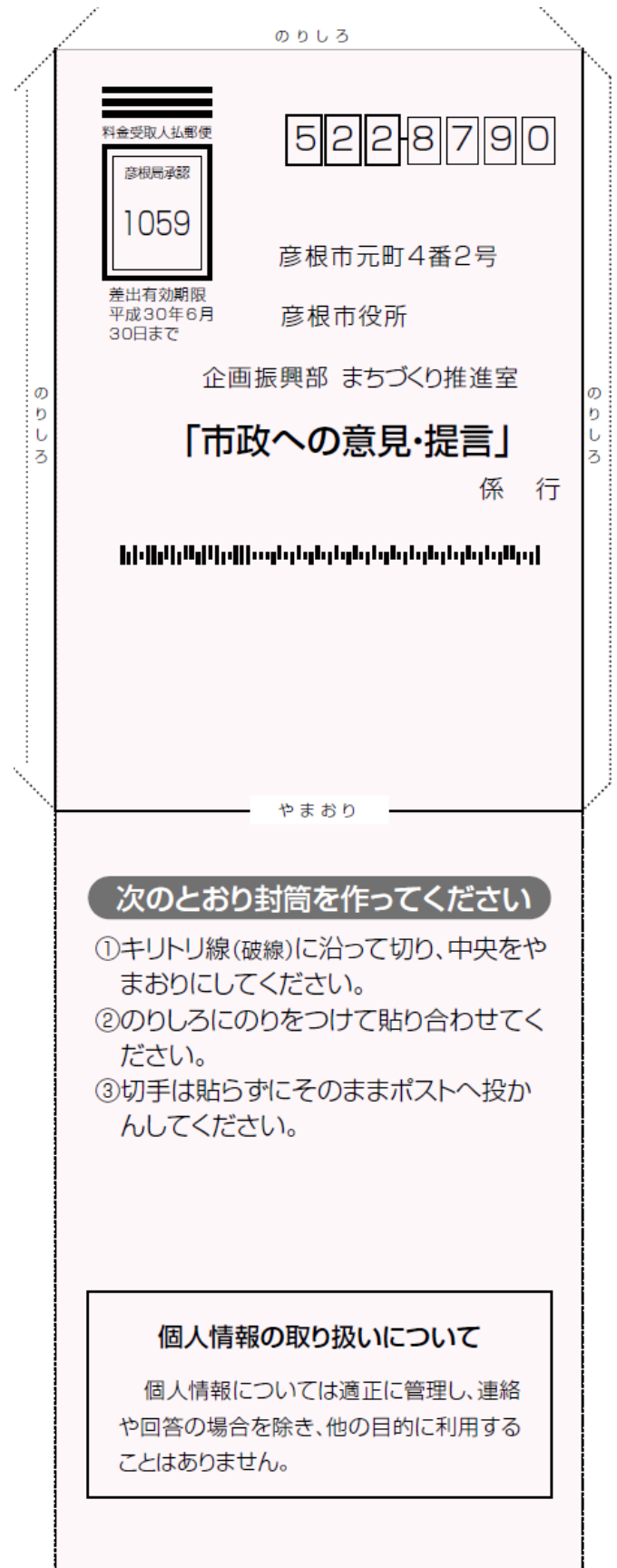
You can also submit them on the municipal government website (Japanese).

Please click "Opinion and suggestion for the municipal Administration "in administrative information, and write your opinion in the exclusive input form and send it.

We received 229 opinions last year. Thank you for valuable opinions.

How to Make an Envelope

- ① Cut along the dotted line and fold in half.
- ② Attach glue to the edge of paper, and put sides together
- ③ Mail it without a stamp.



について

たにおり

住所		
フリガナ		
氏名		
電話番号	性別	<input type="checkbox"/> 男 <input type="checkbox"/> 女
年齢	<input type="checkbox"/> 20歳未満 <input type="checkbox"/> 20歳代 <input type="checkbox"/> 30歳代 <input type="checkbox"/> 40歳代 <input type="checkbox"/> 50歳代 <input type="checkbox"/> 60歳以上	



住所 Adress		
氏名 Name		
電話番号	性別	M F
TEL	Sex	男 女
<input type="checkbox"/> age 20 <input type="checkbox"/> 20~29 <input type="checkbox"/> 30~39 <input type="checkbox"/> 40~49 <input type="checkbox"/> 50~59 <input type="checkbox"/> over 60		

Inquiries: Community Relations Division
TEL.0749-30-6117, FAX.0749-22-1398
E-mail. machizukuri@ma.city.hikone.shiga.jp

☆110 for Human Rights of Child

Do you have the problem of human rights of child such as bullying or corporal punishment or refusal to attend school or ill treatment? Otsu Regional Legal Affairs Bureau Officials and Human Rights Defense Committee will advise you.

Exclusive Telephone: 0120-007-110

Date & Time: Saturday, July 1 and Sunday, July 2 10:00 a.m. - 5:00 p.m.

Inquiries: Otsu Regional Legal Affairs Bureau, Human Rights Defense Division

TEL. 077-522-4673, FAX. 077-522-5317

☆Support for Single-Parent Families

Various Consultations	Self-reliance support members or single-parent families' welfare promotion members are available for consultations.	Children's Welfare Division Tel 0749-26-0994 Fax 0749-26-1768
Finding Jobs	Support about working.	
Education & Training Grants to Support Independence	<ul style="list-style-type: none"> • When parents of single-parent families attend education training courses to attain qualification or technical skill for job-related stability, 60% of the tuition is subsidized. • When parents of single-parent families attend the measures course for getting high-school graduate certification and finish the course, 20% of the tuition is subsidized. <p>In addition, when passed all subjects of the certification exam within 2 years after finished the measurer course, 40% of the tuition is subsidized.</p>	
High Skill Training Subsidy	When parents of single-parent families get an education at a qualified training school for requiring more than one year attaining qualification (e.g. nurse, nursing welfare person, childcare, etc.), a training-subsidy is paid for a fixed period of time.	
Welfare Fund Loan	The loan systems such as the fund for school preparations and studying are available when the child of a single- parent is enrolled in high school or university.	
Childcare Allowance	Childcare allowance is granted to the guardians who are raising children and who no longer live with a father or a mother due to divorce or other reasons.	
Assistant Helper & Childcare Service	Temporarily childcare at a preschool. Services of Family Support Center. Domestic assistant can be dispatched to help with temporary housework and childcare services.	
Subsidy for using of designated Parenting Support Organization	Because of illness or sudden business of the child's guardian, when they use the Parenting Support Project of the social welfare organization and the NPO, a part of the expenses is subsidized.	
Making a Feel Comfortable Place	A support system for Jr. high school students. Open as a 3 rd place of student's life (not school, not home) from July, 2017. Support a children's life energy by study, talk, eat with the staff (college students, etc.)	
Medical Subsidies System	Medical costs can be subsidized for medical examinations.	
Reduction in Tax	For those with dependents, a widow/widower tax deduction may be received for the income tax and residence tax.	Tax Division Tel 0749-30-6140 Fax 0749-22-1398

※Please note that there are applicable requirements, the upper limit for the expenses support and income limitations for each support system. For details, please place your inquiries and consultations with the respective help desks.

☆Place for Children (Junior-high Schoolers) from Single-parent Households

The city opens not a school or home, but the “Third Place”, mainly for educational support. Together with staff members like university students, we provide supportive opportunities to eat meals, talk, and so forth.

Date & Time:

①First & Third Saturday 11:00 a.m. to 2:00 p.m. Hikari-kan (Hinatsu-cho)	②Second & Fourth Thursday 7:00 p.m. to 8:30 p.m. Gender Equality Center “With” (Hirata-cho)
---	--

※The schedule calendar is given to participants.

Capacity: 20 (First-come, first-service basis)

Fee: Free of Charge

Entry: We mail the application forms of this service to persons living on the Child Rearing Allowance.

For more information, please inquire at the Child Welfare Division of Hikone City.

What to Bring: Stationery, Materials to Study

Inquiries: Child Welfare Division
TEL. 0749-26-0994, FAX. 0749-26-1768

☆Child Care and Family Care Leave Law Will be Revised

Child Care and Family Care Leave Law will be revised as following in October so that an employee continues with their work while taking care of children.

- ▶Re-extension of the period of child care leave will be accepted from 1 and a half year old child to 2years old child who can't be enter a nursery school. (Child care leave benefits will be paid until a child reaches to 2years old)
- ▶Employer need to have a positive attitude to let employee and his spouse know the system such as childcare leave they can take from their company individually.
- ▶Employer need to improve paid leave system in order to answer their need for child care. (Such as spouse's maternity leave or leaves for the events their child involved)

Inquiries: Shiga Labor Bureau Employment Environment, Equality Division
TEL. 077-523-1190

☆Beware of Heat Stroke

How can heat stroke be prevented?

<p>1. Take water and something salty Be careful to drink water even if you do not feel thirsty. If you have perspired a lot, please take something salty.</p>	<p>3. Develop physical strength against hot weather Have a balanced diet and exercise Have the habit of sweating such as walking or taking a bath.</p>
<p>2. Prepare a suitable environment Keep the room cool and fresh Keep from direct sunlight by using a shade or curtain Open a window to let fresh air in If necessary, use a fan or air-conditioner.</p>	<p>4. Wear cool clothes Wear breathable clothes. Avoid black dresses and wear cool dresses. When going out, take your hat and parasol so that you might not get too hot.</p>

Inquiries: Health Promotion Division
TEL.0749-24-0816, FAX.0749-24-5870



☆Exemption and Payment Postponement of National Pension Premium

For those who find it difficult to pay national pension premiums due to financial reasons, there is an exemption system and payment postponement system. Basically, application is necessary for every year.

If you forgot to pay your premium without applying for the system, when you become disabled or die, you or your family might not be able to receive disability pension or survivor's pension.

Application: Health Insurance and National Pension Division, Branch Offices or Hikone Pension Office

Approved Period: July ~ June, 2018

If you apply during July, you can apply for the period from July two years ago to June of this year

Acceptance Date: July 3 (Monday) ~

Inquiries: Hikone Pension Office (To-machi), National Pension Division

TEL. 0749-23-1114, FAX. 0749-23-9033

☆A Reduction System of Nursing Care Insurance is Available

For those who find it difficult to pay premiums for Nursing-care Insurance, there is a reduction system.

Be sure to apply for it at Kaigo Fukushi-ka, the Senior's Welfare Division.

Inquiries: Senior's Welfare Division.

TEL. 0749-23-9660, Fax. 0749-26-1768

☆Information about Long Life Medical Care System

A Seniors' (aged over 75) Health Insurance Card (pale pink in color), valid from August 1, will be sent in mid. July by a registered mail; please receive it with *Hanko* (seal). From August 1, please use the new card; the old one should be thrown away or returned to the national Health Insurance and Pension Division, City Hall.

Inquiries: National Health Insurance and Pension Division Tel 0749-30-6112, Fax 0749-22-1398

B Health Insurance Fee for the fiscal year 2017

The notice of the Insurance Fee and how to pay it will be sent in mid. July.

Inquiries: Insurance Premiums Division: TEL. 0749-30-6145, FAX. 0749-22-1398

Shiga Long Life Medical Care System Association: TEL. 077-522-3013

☆Renewal of Certificate(for the Senior)

To the seniors age 70 ~ 74 the certificate will be granted besides Health Insurance Card.

The current certificate is valid until July 31; new certificate will be sent in mid. July.

Inquiries: National Health Insurance and Pension Division

TEL. 0749-30-6112, Fax. 0749-22-1398

**☆Notice to the people who have applied the National Health Insurance
and Advanced Elderly Medical Service System**

High-cost medical care expenses with individual limit for over 70 years old will be changed from 1st of August.

***About the high-cost medical care benefit system**

When you incur high medical care costs, your copayment for medical care costs is capped. If your copayment calculated based on certain standards exceeds the maximum, the excess amount will be paid as “High-Cost Medical Care Benefits”.

Application classification		Until July 31,2017		From August 1,2017	
		Outpatient (per individual)	Outpatient + Inpatient (per household)	Outpatient (per individual)	Outpatient + Inpatient (per household)
Full salaries	Taxable income 145,000 yen and over	44,400 yen	80,100 yen (※2) 44,000 yen (※3)	57,600 yen	80,100 yen (※1) 44,000 yen (※2)
	General	Taxable income less than 145,000 yen (※1)	12,000 yen	44,400 yen	14,000 yen (Annual maximm 144,000 yen)
Municipal -tax exempt	II Municipal-tax Exempt household	8,000 yen	24,600 yen	8,000 yen	24,600 yen
	I Municipal-tax Exempt household (Pension income less than 800,000 yen, etc)		15,000 yen		15,000 yen

※1 The net total of the household income is less than 5,200,000 yen

(The single household income should be less than 3,830,000 yen or the net total of the proviso income should be less than 2,100,000 yen).

※2 In case of the amount of medical expense is over 267,000 yen, 1% of excess amount will be added.


※3 When you reach the amount of maximum limit more than three times within one year, the limit amount will be lowered from the fourth payment.

☆Are You Throwing Away Recyclable Paper Waste?

The tons of paper waste we produce everyday is categorized into whether it can be utilized as valuable recyclable resources or not, by the individual waste management.

So-called “*Koshi*” (collected as recyclable used paper waste) is newspapers, magazines, cardboard and cartons. Besides *Koshi*, there is one more recyclable paper waste category called *Zatsugami*.

This *Zatsugami* is a group of paper waste such as wrapping paper, paper bags, envelopes, letters, calendars, paper files, notebooks, empty paper containers, toilet paper tubes, to name a few.

Have you thrown out any of them as burnable garbage before? Some of the paper containers for snacks and daily necessities are marked with the  mark which serves as an indication of recycling. If your answer is yes, please try to separate them into the recycling waste group whenever the mark catches your attention.

However, when those paper containers are waterproofed or processed with special aroma, they are categorized into non-recyclable paper waste called “*Kinki-hin*”. The *Kinki-hin* waste hinders the process of recycling, and therefore please put it into a designated plastic bag for combustible garbage, instead of recyclable materials.

As for how to take out *Zatsugami*, in the case of garbage collection carried out by the local government, all you need to do is to place the *Zatsugami* waste between a pile of magazines, cardboard, etc. and take them out at the designated area in your local district.

You can also ask a private business for the waste collection of *Zatsugami*, but the general rules of the *Zatsugami* collection differ from company to company. So please get necessary information from them in advance.

Plus, there are some groceries, drug stores and others actively engaging in the *Zatsugami* Collection. Please check their general rules of the collection at each store as well.

By putting those recycling activities mentioned above into practice, you can make a contribution to the efforts towards waste reduction.

☆Consumer Advisory Center

Please consult with us when you have trouble with suppliers. When you visit us please prepare a note listing:

- 1 Who bought / made an agreement.
- 2 Objective product / service.
- 3 Price/ fee.
- 4 How much you have paid and how you paid(with cash or card)?
- 5 What led you to buy/ make an agreement?
- 6 The name, address and phone number of the supplier.
- 7 The content of agreement Please prepare any document such as the written agreement, the written estimate, the receipt, leaflets and memorandum, too.

At the center, the receptionist will ask you your name, address, telephone number, sex, age occupation, etc; your maximum cooperation is highly appreciated.

Inquiries: Hikone City, Consumer Advisory Center, Tel. 0749-30-6144(weekdays: 9:00am~ noon, 1:00pm~ 4:15pm)
Consumer Hot Line

Please dial ‘188’. The automatic guide will ask to dial your zip-code; the line will be connected to the nearest consumer advisory center.

RECRUITMENT & EVENTS

☆Hikone Summer Events in 2017

- **The Opening of Matsubara and Shingaihama Swimming Areas**

Terms: Saturday, July 15 ~ Wednesday, August 16



- **Hikone Yukata Festival**

Date & Time: Saturday, July 22 3:00 p.m. to 9:00 p.m.

Place: Yumekyobashi Castle Road

- **Summer Night Festival & Hikone Tanabata Festival**

Date & Time: Saturday, July 29 5:00 p.m. to 9:30 p.m.

Place: Ginza, Chuo, Nobori-machi Green Street,
River Side Hashimoto Shopping Street, Hanasyobu Street

- **The 40th Birdman Contest**

Date & Time: Saturday, July 29 7:30 a.m. —

Sunday, July 30 6:00 a.m. —

Place: Matsubara Swimming Area



- **Hikone Fireworks**

Date & Time: Tuesday, August 1 7:30 p.m. — 8:30 p.m.

Place: Matsubara Swimming Area



- **Hikone Manto Nagashi Festival**

Date & Time: Sunday, August 6 6:30 p.m. — 8:30 p.m.

Place: The Seri River Bank (between Seri-bashi Bridge and Gosanjo-bashi Bridge)

- **Hikonebayashi Festival**

Date & Time: Thursday, August 10 5:30 p.m. — 9:00 p.m.

Place: Ginza, Chuo, Noborimachi-green-dori and River-side-hashimoto Shopping Streets

Inquiries : Tourism Planning Division

TEL. 0749-30-6120

☆Events at the Children's Center

●Starry Sky Class 「Let's enjoy the star festival and the moon!」

Contents: You have a lecture about the star festival and the moon. You are going to inquire into the sky through an astronomical telescope.

Date & Time: Friday, July 7 19:30~21:00

Eligibility: Child being interested in a heavenly body

(Children of elementary age or younger need to be accompanied by a guardian)

Capacity: First 30 children

Participation fee: ¥300 (Free for preschool children)

Application period: Saturday, June 24~Sunday, July 2

* This events will be canceled in case of a cloudy or rainy sky. Please check that the event will be held or not after 16:00 on that day.

●Children's Class 「Let's make wooden miniature chair !」

Contents: Let's make your own chair made of the warmth of the wood with the students in Hikone High School of Technology.

Date & Time: Saturday, July 15 13:30~15:00

Eligibility: Elementary school students * required to be accompanied by a guardian

Capacity: First 20 pairs

Participation fee: ¥ 300

Application period: Saturday, June 24~ Wednesday, July 12

●Child Rearing Class 「Important things to protect our children's futures 」

Contents: Why don't you think about important things for us in order to raise our children healthy and happily.

Date & Time: Tuesday, July 11 10:00~11:30

Eligibility: Guardian of children born from April 2, 2011 to February 28, 2017

Capacity: First 20 people

What to bring: Writing things

Application period: Saturday, June 24~Thursday, July 6

* We have childcare service.

(Free of charge. Please contact with us in advance because the capacity is limited)

Inquiries: The Children's Center

TEL. 0749-28-3645, FAX. 0749-28-3646

☆Events at Hikone-shi Bunka Plaza (Hikone City Culture Plaza)

TEL. 0749-26-8601, FAX. 0749-26-8602

Wakudoki Kids Festa (Festival for Kids) in 2017

The workshop for families with young children in the summer vacation

July 28th (Fri)
29th (Sat)
30th (Sun)

Free

- On Friday, July 28

Ikimono-kenkyu-shitu by Sasaki Captain

Let's learn about living things with Mr. Sasaki, professional naturalist

Time: 13:30 ~ 16:00 Place: Echo Hall Requirements: Children older than three years old
Capacity: 50 groups 100 persons

Let's dance only yourself

Time: 10:00 ~ 12:00, 13:30 ~ 15:30 Place: Messe Hall Capacity: 20 persons each time

Minna-de-ukiuki Window Art

Let's draw on the big window glass with the magic chalks.

Time: 10:30 ~ 12:00 Place: Grand Hall 1F lobby Capacity: 20 persons

Tour of the back side of the stage of Bunnka Plaza

The participants can see the back side of the stage.

Time: 10:30 ~ 12:00, 14:00 ~ 15:30 Place: Grand Hall Capacity: 20 persons each time

- On Saturday, July 29

Fly to the cosmos ! Cosmic College in Hikone

Participants will learn astronomy and make the water rocket under the guidance of JAXA (Japan Aerospace Exploration Agency).

Time: 10:00 ~ 16:00 (The event will recess for lunch.) Place: Messe Hall, The outdoors
Requirements: From the third grade to the sixth grade elementary school students
Place: Messe Hall, The outdoors Capacity: 100 persons

Happy Concert with Takapartch Let's play in concert !

Time: 10:45 ~ 12:15, 13:30 ~ 15:00 place: The Exhibition lobby

Requirements: Children older than three years old Capacity: 30 persons each time

Kamiwaza Experience Let's make the paper works with papers and a pair of scissors.

Time: 10:00 ~ , 10:45 ~ , 11:30 ~ , 13:30 ~ , 14:15 ~ , (The 30 minutes lessons each time)
Place: The second training room Capacity: 10 persons each time

- On Sunday, July 30

Let's challenge making simple dramas.

Time: 10:00 ~ 15:00 (The event will recess for lunch.) Place: Messe Hall

Requirements: Elementary and Junior High School students Capacity: 15 persons

The Doll's Theatrical Company, Clarte

Let's make the dolls of cats and mice after the puppet show and play with them.

Time: 10:30 ~ 12:00, 13:30 ~ 15:00 Place: The exhibition lobby

Requirements: Children older than three years old Capacity: 20 persons each time

Participate with the persons who are high school student age if the participants are younger than the second grade elementary school student age.

Application will be accepted at the window of Hikone City Culture Plaza, by telephone and home page on a first-come, first-served basis.

Closed: Monday, July 3, Monday, July 10 Deadline: Monday, Holiday, July 17

☆Shiga University Market

———**The summer harvest festival of farm products that recognise the environment**———

Selling fresh and quality vegetables, fruits, and processed foods that the farmers produce with care.

Date & Time: Friday, July 7 11:30~13:30 * The market will be held in light rain.

Place: The Plaza in front of The Shiga University Cooperative.

**Inquiries: The Research Center for Society, Faculty of Economics, Shiga University
TEL. 0749-27-1141**

☆Nature Observation of Mt.Amatsubo

Let's observe the mushroom in Mt.Amatsubo. *The event might be cancelled due to bad weather.

Date & Time: Saturday, July 15 9:00~12:00

Place: CHIDORIGAOKA- Park Parking lot (Hirata-cho)

Fee: 100 yen

What to bring: Writing instrument, Rain gear

**Inquiries: Hikone nature observation meeting
(Person in charge: Watanabe-san)TEL. 0749-28-3867**

☆“Hikone De Asaichi” (The Fresh Morning Market in Hikone)

Selling local fresh vegetable, bean curd, local lake sea foods, local *SAKE*, handcrafted general goods, and soy sauce under the concept "Safety food" "Local production for local consumption" "Handmade".

Date & Time: Sunday, July 16 8:00~12:00

Place: GOKOKU- *JINJYA* (shrine) (Osue- cho)

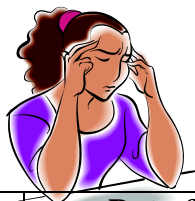
**Inquiries: “Hikone De Asaichi” Executive Committee
TEL. 0749-24-4461, hikonedesaichi55@gmail.com**

☆Open Campus 2017—The University of Shiga Prefecture

The explanation of department, Talk live by enrolled student, Trial course, Campus tour, Private consultation

Date & Time: Saturday, July 22, Sunday, July 23 9:00~15:00

**Inquiries: The University of Shiga Prefecture Education and Matriculation Group, Matriculation Section
TEL. 0749-28-8243, FAX. 28-8472 E-mail. nyushi@office.usp.ac.jp**



Consultation

	Date & Time	Place	Contents
Human-Rights Counseling	July 5 & 19 (Wed) 13:00 ~ 15:00	Consultation Room (City Hall 1 F)	Counseling about bullying and discrimination Tel0749-22-0242
Consultation for Tax Affairs	July 5 (Wed) (reservation by telephone) 13:30 ~ 16:30	Tax Division Meeting Room (City Hall 2F)	Consulting about income tax return credit for medical expenses, inheritance tax, gift tax etc *30minutes per person (the first 6 people) Tel.0749-30-6140 Fax.0749-22-1398
Consultation for Reclusive and Unsociable People	July 6 (Thu) 15:00 ~ 17:00 (by reservation)	Public Health Center (Wada-cho)	Helping sufferers over 16 years old and families. Tel.0749-21-0283 Fax.0749-26-7540
Alcohol Consultation	July 7 (Fri) 14:00 ~ 16:30 (by reservation)		Issue of alcoholism Tel 0749-21-0283 Fax0749-26-7540
Child-care Advice	July 13 (Thu) 10:30 ~ 12:00	Children's Center	A control dietician advises on childcare Tel 0749-28-3645 Fax 0749-28-3646
Law Consultation	July 28 (Fri) 13:00 ~ 16:00 (by reservation)	Community Relations Division (City Hall 1F)	*Consultation fee: 5400 yen per 30-min session (Please pay on the consultation day) *The first 6 people from 8:30 on July 19) *Only those who live or work in Hikone Tel0749-30-6117Fax0749-22-1398
Human-Rights Counseling by Multiple Language	Every Mon. ~ Fri. (except holidays)	Otsu Regional Legal Affairs Bureau	Telephone consultation for the human rights. Exclusive telephone for consultation: 0570-090-911
Synthetic Consultation for Child & the Young	Every Mon. ~ Fri. (except holidays) ①9:00 ~ 12:00 ②13:00 ~ 17:00	Child & the Young Consultation Center	Consultation for person 39years old and younger who has troubles in social life (neetor unsociable person etc). Tel 0749-47-3001 Fax 0749-26-1768
Child・Family Consultation	Every Mon. ~ Fri. (except holidays) 8:30 ~ 17:15	Consultation Room for Children	Consultation for child care issues, child abuse, domestic violence etc Tel0749-23-7838 Fax0749-26-1768
Developmental Disorder Consultation	Every Mon. ~ Fri. (except holidays) ①9:00 ~ 12:00 ②13:00 ~ 16:00 (by reservation)	Welfare Center for the Disabled (Hirata-cho)	Persons over 6 who have a developmental disorder or feels uneasy about it. Available for only persons living in Hikone. Tel 0749-26-8282 ※Health Promotion Division advises for a child who is 3years old or younger Tel 0749-24-0816
Consumer Life Consultation	Every Mon. ~ Fri. (except holidays) ①9:00 ~ 12:00 ②13:00 ~ 16:15	City life Environment Division (City Hall 1 F)	Consultation about the trouble of consumer life, contracts, etc Tel0749-30-6144
Consultation for Bullying/Hot Line	Every Mon. ~ Fri. (except holidays) 9:00 ~ 17:00	School Support Room (Board of Education)	The experienced person in the education advises you *The anonymity is possible *You can consult on the municipal government website *Exclusive telephone for consultation: 0749-24-7977
Traffic Accident Consultation	Every Tue & Thu ①9:00 ~ 12:00 ②13:00 ~ 16:00	Koto Joint Government Building 2F	Consultation by telephone is also available from Monday to Friday except holiday Tel0749-27-2230
Consultation for Troubles	Every Wed & Fri (except the second Wed. & holidays) 13:00 ~ 16:00	Welfare Center (Hirata-cho)	Consultation for various troubles that happen in your life Tel 0749-22-2821 Fax 0749-22-2841 *Exclusive telephone for consultation: 0749-22-0294
	The second Wednesday of each month(except holidays) 13:00 ~ 16:00	Kita Elderly Welfare Center (Baba-cho)	
	The second Wednesday of odd month (except holidays) 13:00 ~ 16:00	Minami Elderly Welfare Center	

☆Hikone City Residents' Check-up

Arteriosclerosis can be caused by high blood pressure, high blood sugar, and high blood cholesterol.

Please take the medical check-up once a year.

Eligibility: Hikone residents and meet the following requirements ① or ②

●**Health Check-up** (Medical examination by interview, Body measurement, Abdominal circumference measurement, Blood pressure measurement, Urine test, Blood test Medical check-up)

① Those who were born between April 1st 1978 and April 1st 1999.

② Public assistance recipients who were born before March 31 1978.

●**Lungs Cancer check-up**

Those who were born between April 1st 1953 and March 31 1978

●**Tuberculosis check-up**

Those who were born before March 31 1953

●**Hepatitis Virus Check-up**

① Those who were 40,45,50,55,60-years old and have never had the previous Hikone city's hepatitis virus check-up. A notification will be individually at the end of May.

② Those who were over 41 years old and have never had the previous Hikone city's hepatitis virus check-up.

※Please call to the health promotion division, or send a fax within one week before the check-ups.



Date	Place	Time
July 3 (Mon)	Hida-cho community center	9:30~11:00
July 11 (Tue)	Tazuke-cho community center	9:30~11:00
July 13 (Thu)	Hikone Sun Paresu	9:30~11:00
	Hikone Sun Paresu	13:00~14:30
July 14 (Fri)	Hikone Sun Paresu (Female)	9:30~11:00
July 19 (Wed)	Mizuho culture center	9:30~11:00
July 20 (Thu)	Mizuho culture center	9:00~11:00
July 24 (Mon)	Toriiimoto district center	9:30~11:00
July 25 (Tue)	Toriiimoto district center	9:00~11:00
July 26 (Wed)	Higashi district center	9:30~11:00
July 31 (Mon)	Green-pia Hikone	9:30~11:00
Aug 4 (Fri)	Kawase district center	9:30~11:00
Aug 7 (Mon)	Sawayama elementary school	9:30~11:00

Inquiries: Health Promotion Division
TEL. 0749-24-0816, FAX. 0749-24-5870

☆Cancer Checkups and Osteoporosis Checkup

The reservation of checkup on August & September will start from Monday, July 3.

Please make an appointment by phone (0749-24-3719) or fax (0749-24-5870: reservation only)

This line will be busy on July 3. We also accept reservation through internet. Please visit QR code.

=Schedule for men=

Date	Time	Place	stomach	Large intestine	Lungs	special
August 21 (Mon)	a.m.	Kusunoki Center	•	•	•	
September 28 (Thu)		HikoneSan Paresu	•	•	•	•

=Schedule for women=

Date	Time	Place	Stomach	Large Intestine	Lungs	Breast	Uterine	Osteoporosis	Special
August 9 (Wed)	a.m.	Kusunoki Center	•	•	•	•	•		
August 9 (Wed)	p.m.		•	•	•	•	•	•	
September 2 (Sat)	a.m.		•	•	•	•	•	•	•
September 15 (Fri)			•	•	•	•	•		
September 26 (Tue)			Greenpia Hikone	•	•	•	•	•	

*For other health checkup schedule, please see ‘Information about Hikone City Health checkups and Cancer checkups in 2017’.

☆Eating Habit Consultation

Advice about your eating habits by managerial dietitian with your health checkup results.

Date & Time: Mon. August 7 9:00~ & 10:30~

Capacity: 1 person/ each time (reserved)

Place: Kusunoki Center 2F

*Any consultations concerning your meals are also available. Please apply by calling anytime.

☆Quit Smoking Easily Consultation

A smoking habit is nicotine dependence. If you try to quit smoking, we support your challenge.

Date & Time: Wednesday, July 12 9:00~ 10:00~ 11:00~

Place: Kusunoki Center 2F (Next to Hikone Municipal Hospital)

Capacity: 1 person / each time slot (Reserved)

- Contents:
- Check for your lung’s contamination (Measure the carbon monoxide density in your exhalation.)
 - Check for your addiction to cigarettes (Measure nicotine density in your urine)
 - Consultation on how to quit smoking



Inquiries: The Health Promotion Division

TEL. 0749-24-0816, FAX. 0749-24-5870

☆Prevent Food Poisoning!

The food poisoning occurs at not only the restaurants but also the home.

Follow three principles to prevent food poisoning

1. Keep out bacteria

-Wash hands before cooking, meals, and before and after cooking meat/fish and eggs, after using the toilet, changing diapers, blowing nose, touching animals.

-Wash kitchen utensils at every use well or sterilize them.

-Cook meat /fish and vegetables with separate kitchen utensils.

2. Not propagate bacteria

-Preserve the food in a refrigerator, but eat quickly. Bacteria multiplies even in a refrigerator.

3. Kill bacteria

-Heat to the center of the food (more than 75 degree for more than 1 minutes)

-Sterilize kitchen knife, chopping board and washcloth with boiling water and dry well.

-Using of the sterilizer for kitchen is effective.

Inquiries: Health promotion Division.

☆Brain Checkup

Let's check your brain with touch screen to know the ability of memory.

Date & Time: Fri. July 7 10:00~, 11:00~, 13:00~ (5minutes/1 person)

Place: Naka Rojinn Fukusi Center (at Kaideima-cho)

Eligibility: Over 40-year-old

Capacity: 16 person/each time (need to apply)

Fee: Free

Application & Inquiries: Hikone City Dementia HOT Support Center

Tel. 0749-30-9601 / Fax. 0749-26-2500 (8:30~17:00)

Be sure to tell your name, age, address, date & time by call or fax

If you take a complete medical checkup at Hikone Municipal

Hospital, you can choose trans-nasal endoscope.

For further information, call Hikone Municipal Hospital *Kensin*

(health checkup) Center 0749-22-6058

☆Class for New Parents

Contents: Guidance & experience about baby care (how to bathe, change a diaper, and hold your new baby)

Date & Time: Saturday, June 29 9:30~12:00 (Acceptance 9:15~9:30)

Place: Hikone City Health & Welfare Center Annex2F

Eligibility: Pregnant Women, over 24 weeks pregnant and their partners having a resident registration
in Hikone City

Capacity: 18 couples- Mothers who expect their first child delivery sooner have a priority

Things to bring : Your Maternal or Paternal and Child Health Handbook

Application: Thursday, July 6~Tuesday, July 18

Call the Health Promotion Division: TEL. 0749-24-0816, FAX. 0749- 24-5870

*There is no nursery

☆Support of Infertility Treatment Expenses

●Support of specific infertility treatment expenses

Eligibility (Those who meet all of the following):

- Husband and wife who live in the city at the time of a medical treatment and application, and are legally married.
- Those who have received Shiga specific infertility treatment expense support.
- Husband and wife are not behind with municipal tax.

The amount and times of support:

A specific infertility treatment expense is supported. The amount of support limit is 50,000 yen/time.

Please do not overlap with a Shiga specific infertility treatment subsidy

The wife's age when the starting treatment at the first expenses support	The times of support (include the support times of until fiscal 2015)
Under 39 years old	Maximum of 6 times
40~42 years old	Maximum of 3times
Over 43 years old	Not covered

※In the following cases, 25,000 yen/time should be supported.

- ・ Embryo transplantation by using frozen embryo
- ・ When treatment is stopped because patients cannot get egg in spite of ovulating.

Application limit: within 3months from the date of Shiga prefecture decision

●Support of artificial insemination expenses

Eligibility (Those who meet all of the following):

- Husband and wife who live in the city at the time of a medical treatment and application, and are legally married.
- Husband and wife's income in the last financial year is less than 7,300,000 yen.
- Husband and wife are not behind with municipal tax.

The amount of support: Half of the amount of the charge is supported (disregarding fractions of less than 1,000 yen) for a total of two-years. The total amount of support money is 50,000 yen.

Application limit: March 30 (Fri), 2018 for treatment in fiscal 2017.

(When you get the treatment in March 2018, you can apply until April 27 (Fri), 2018.)

Application and determination:

Apply to The Health Promotion Division. Determination is after screening the application.

Inquiries: The Health Promotion Division
TEL. 0749-24-0816, FAX. 0749-24-5870

☆Piyo-Piyo Salon

Let's talk freely about the enjoyment and the problem of childcare with a guest midwife.

Date & Time: Wednesday, July 26 10:00~11:30 (Reception : 9:45~10:00)

Place: Kusunoki Center 1 F

Eligibility: 2~3month old infants and their guardians who have resident registration in Hikone city.

What to bring: Maternal and Child Health Handbook, Bath Towel (The baby wrapper is also ok.)



☆Baby Salon

Date & Time : Tuesday, July 4 10:00~11:30 (acceptance 9:45~10:00)

Place: Children's center multi-purpose room

Eligibility: 2~6-month old infants & their guardians

Things to bring: your Maternal and Child Health Handbook, a bath towel

Contents: Exchanging experiences about child-raising and making friends



☆Individual Consultation for Infants

Please bring your Maternal and Child Health Handbook,

Date & Time : Thursday, July 13&27:30~11:00

Place: Kusunoki Center 1F(Next to Hikone Municipal Hospital)

*Consultation by a nutritionist is available on Thursday, July27

☆Weaning Period Consultation

* Let's give food twice a day.

Date & Time: Friday, July7 10:00~11:30 (Acceptance 9:45~10:00)

Place: Kusunoki Center 2F(Next to Hikone Municipal Hospital)

Eligibility: 7~8 months old infant & their guardians

Things to bring: your Maternal and Child Health Handbook

☆Health Check-ups for Infants

July Kusunoki Center 1F(Next to Hikone Municipal Hospital)/ 13:00~14:00

4-Month-Old Babies	18(Tue)	Born between Mar1 and 15,2017
	25(Tue)	Born between Mar 16 and 31,2017
10-Month-Old Babies	12(Wed)	Born between Sep1 and 15,2016
	19(Wed)	Born between Sep16 and 30, 2016

Kusunoki Center 1F(Next to Hikone Municipal Hospital) / 13:00~14:00

18-Month-Old Babies	14(Fri)	Born between Dec 1 and 15,2015
	21(Fri)	Born between Dec 16 and 31,2015
2-Year & 6-Month-Old Children	13(Thu)	Born between Dec1 and 15,2014
	20(Thu)	Born between Dec16 and 31,2014
3-Year & 6-Month-Old Children	10(Mon)	Born between Dec1 and 15,2013
	24 (Mon)	Born between Dec16 and 31,2013

*As individual notification of Health Check-ups is for 4 month-old babies only, please check the Suku-Suku book for what contents and items to bring.

*For Health Check-ups for18- month-old-babies, a toothbrush is necessary and for 2- year & 6-month-old-children, a toothbrush and cup are necessary. There will be a class on the correct way of brushing your child's teeth.

*For Health Check-ups for 3-years& 6 -month-old children, there is an urinalysis. Please bring a first morning urine sample in a clean bottle.

* If you are unable to come on the date specified or if you have any questions about the Health check for infants, contact

The Health Promotion Division: TEL. 0749-24-0816, Fax. 0749-24-5870

Are Typical Schools in Japan Really That Unique?



As the number of foreign nationals living in Japan has been on the rise, I speculate that more and more children with foreign backgrounds will start to go to elementary or junior-high schools here. For the families who were born and grew up in Japan, the Japanese school environment, occasions, rules, etc. are all familiar to them; however, for the parents and children who had studied only overseas before migrating here, Japanese schools are one of a kind, and as a consequence, there are a wide range of things they do not fully understand.

For instance, as we all may know, school events differ from country to country: some countries actually host similar events to the ones in Japan, but it does not mean those similar events are orchestrated in precisely the same way as Japan. In Brazil, we do not even have a school entrance ceremony. On the day when the new school year begins, children just come to school and attend their classes like nothing special is happening. As for schools like France in which a majority of parents are working parents, it is out of the question to carry out the entrance and graduation ceremonies on the weekday, so all the events that require parents' attendance are arranged on the weekend – not the case in Japan, apparently.

What is more, the foreign parents and children may also be puzzled by some regular school practices in Japan. Here, on the one hand, school kids bring tea in their thermos bottles to school, and on the other hand, in the countries where people do not drink teas, parents have their children bring sugary drinks. On top of it, since most of the westerners spend their days with their street shoes on, it makes no sense to most of them to see Japanese school children putting indoor shoes on before going in school. To tell you the truth, seeing the school kids changing their shoes at the school gate knocked my socks off as well.

For additional reasons, such as going to and leaving school in groups, afterschool clubs and so on, it is obvious that Japan has established quite a unique school system. In this sense, it is an absolute necessity for the foreign pupils to bring their Japanese language skills to the point where they can feel a sense of belonging at school. Yet, I also suggest that no effort should be spared to teach both parents and children from different parts of the world on the Japanese school environment, regulations, systems, etc.

Given the aforementioned, school life in a different country is a whole new and perplexing experience for anyone, regardless of age. I would appreciate if the Japanese readers of my column nicely offer some help to the foreign parents and children at school.

“Natalia's Room” is a monthly column published in the Japanese version of Koho Hikone Newsletter since June 2014. Natalia is from Brazil and has been working as Coordinator of International Relations of Hikone since coming to Japan in 2014. This column features topics related to multicultural coexistence, such as difference of cultures and living in Japan as a foreigner.

