

The city where everyone wants to live

広報 ひこね (英訳版)

Community

Newsletter,

Koho

HIKONE



No.1381-82

Date: August 1st, 2017

Published by:

Multicultural Coexistence
Human Rights Policy Division
Hikone City Hall

Tel:

0749-30-6113

Translated by:

VOICE Trans. Group

Proofread by:

Walter Klinger

Edited by:

Multicultural Coexistence
Human Rights Policy Division

2017.08

CONTENTS

- Special Section: Details of Temporary City Hall (P4,5)
- The 31st Hikone City Marathon Registration (P9)
- Hikone City Residents' Health Checkup (P13)
- Natalia's Room (P 17)



(Abridged Edition) <http://www.city.hikone.shiga.jp/english/index.html>

Name of Division	Telephone Number
Hikone City Hall (Representation)	0749-22-1411 (Main Number)
Hikone City Hall (JINKEN SEISAKU KA) 彦根市役所 (人権政策課)	0749-30-6113 (Direct Number) 直通番号

You can ask English Interpreter Service at the reception in Hikone City Hall.

Please say "English Interpreter please" in Japanese, "EIGO TSUUYAKU ONEGAI SHIMASU".

●“Koho Hikone” foreign language version by Hikone City is issued once every month.

This newsletter is available at

- | | |
|---------------------------|---|
| * Head JP Post Office | * Viva City 2F(near the children play ground) |
| * Yujin Yamazaki Hospital | * Shiga Bank (Oyabu Branch) |
| * Jinno Clinic | * “GyomuSuper Market”(Toga-cho) |
| * Hikone City Hall 1F | * BeisiaHikone |
| * AEON TOWN Hikone | * Hikone City Hospital |

Various Services

●Interpreters are available if you request this service at the reception desk.

Please say this Japanese sentence “*eigo-tsuuyaku-onegai-shimasu.*”

(It means “please get me an English interpreter”.) えいご つうやく おねがいします。

We might change the interpreter’s availability.

Hikone City Hall: Weekdays 8:30 a.m.to 12:00 p.m. 1:00 p.m. to 5:15 p.m.



Japanese Classes



Day	Hour	Location, Place	Organization Name to Contact	Cost
Wednesday すいようび	7:00 p.m.to 8:30 p.m.	Shimin kaikan 市民会館	Hikoneshi Kokusai Kyoukai 彦根市国際協会 Tel (0749)-22-5931 (Not available from Dec. to Feb.)	100yen / lesson 100 円 / 1 回
Saturday 土ようび	2:00 p.m. to 4:00 p.m.	Naka-chiku Kouminkan 中地区公民館	Hikone Kokusai Kouryu-kai VOICE ひこね国際交流会 VOICE なえむらさん(NAEMURA) Tel 090-7118-5250	100yen / lesson 100 円 / 1 回
Sunday にちようび	10:00 a.m. to 11:30 a.m.	Nishi-chiku Kouminkan 西地区公民館	Volunteer Nihongo Kyoushitsu SMILE ボランティア日本語教室スマイル よしおかさん (YOSHIOKA) Tel (0749)-24-7241	100yen / lesson 100 円 / 1 回
Monday~ Friday (Except for holidays) げつようび~きんようび	①9:30 a.m. to 10:50 a.m. ②11:00 a.m. to 12:20 p.m. ③1:30 p.m. to 2:50 p.m. ④3:00 p.m. to 4:20 p.m.	Innovation Office “NAYASHICHI” Shiro-machi1-7-16	“Smile s Satellite”(Weekday Class) NAYASHICHI Tel (0749)-29-5077 or みずのさん(MIZUNO) Tel 070-5661-7345	100yen / lesson 100 円 / 1 回

【Hikone International Lounge News】

Computer use is free in the Hikone International Lounge. We are waiting for your use!!

INFORMATION

☆Garbage Collection on Public Holiday

We carry out the garbage collection as normal on Monday September 18th – Public Holiday. However, the Sanitation Centre will not accept any type of waste on that day.

*For more details, please look at “Garbage Calendar 2017”.

☆Large-size Garbage Collection on Public Holiday

From 9:00 a.m. to 12:00 p.m. on September 23rd, Saturday, the Sanitation Centre takes in large-size garbage (inclusive of small home appliances).

*To confirm your residency in Hikone, you will be asked to show your ID (driver’s licence, resident card, etc.).

*The centre accepts only large-size garbage (including small home appliances).

*The disposal of large-size garbage is charged.

However, NO charge for large-size garbage under 1 meter (approx. 3.2 feet) in length, width, and depth.

*The centre also accepts unbroken light bulbs and florescent tubes alongside the small appliances.

*The centre will NOT approve of any appliances, such as TVs, that are not targeted in the Recycling Act.

*Bringing garbage into the Sanitation Centre is not accepted outside of business hours.

Inquiries: Sanitation Centre Tel 0749-22-2734, Fax 0749-24-7787

☆The Exchange of Water Supply Meter

We seek your understanding in the matter that the water meter in every house is due for inspection approval according to the measurement law, and the replacement of the water meter is to be carried out.

Exchange due date: from August to December

*You shall be informed by postcard beforehand.

* The specialist who is to perform the water meter exchange work should be authorized with the ‘water meter exchange business practitioner certificate’

* Your presence is not necessary during the exchange work. (Except in situations where the water meter is indoors.)

* Please refrain from parking on the water meter (box) as it will be a hindrance to the replacement work and it will be unable to be carried out smoothly.

Inquiries: Hikone City Water Supply Customer Service Center

Tel 0749-27-2802, Fax 0749-27-2803

☆The Head Office of Hikone City Hall Moves to the Temporary Office

Relocation destination: Apart of the third floor and the fourth floor in AL PLAZA Hikone(*Daito-cho*)

Date: From Friday, August 11 to Wednesday, August 16

※The extension of window service will not do in August 10

Opening Day for Services:

▶Window Services: Monday, August 14

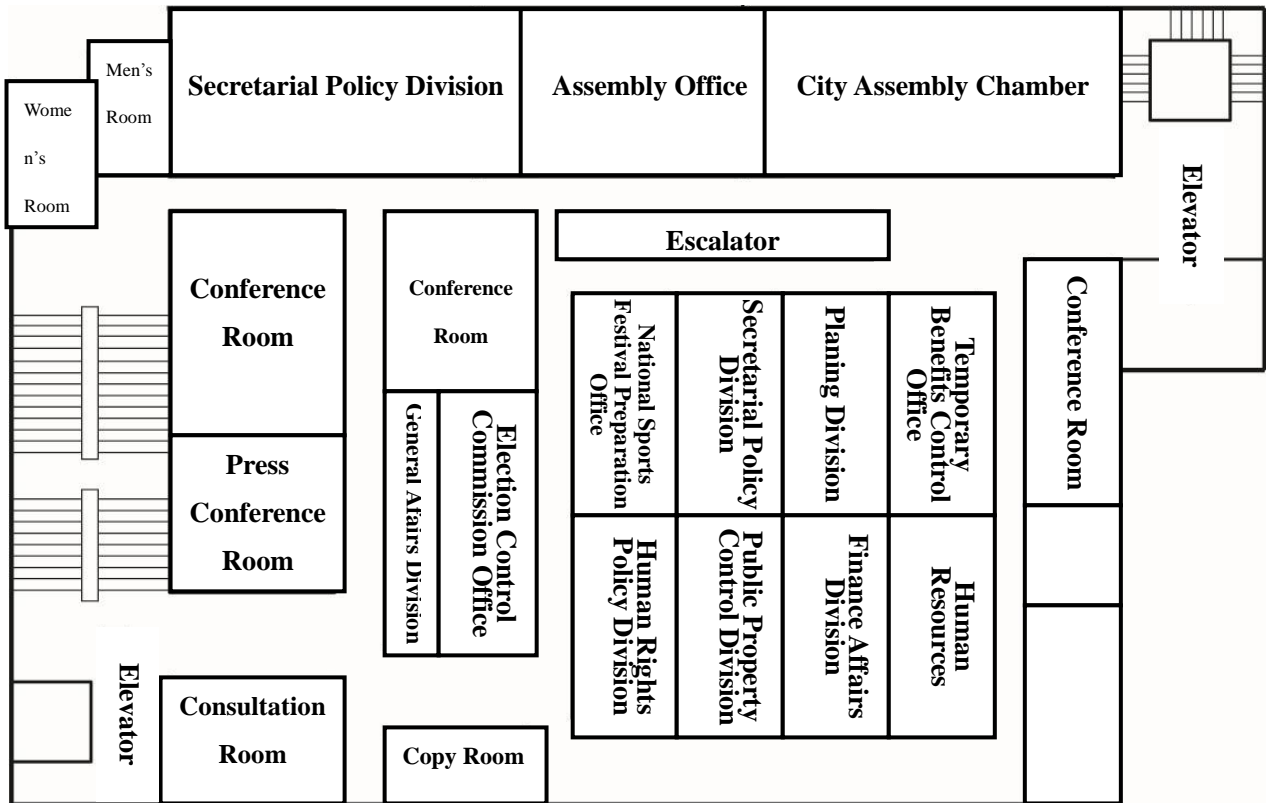
▶Other Services: Thursday, August 17

We apologize to everybody for any inconvenience that may experience during our moving.

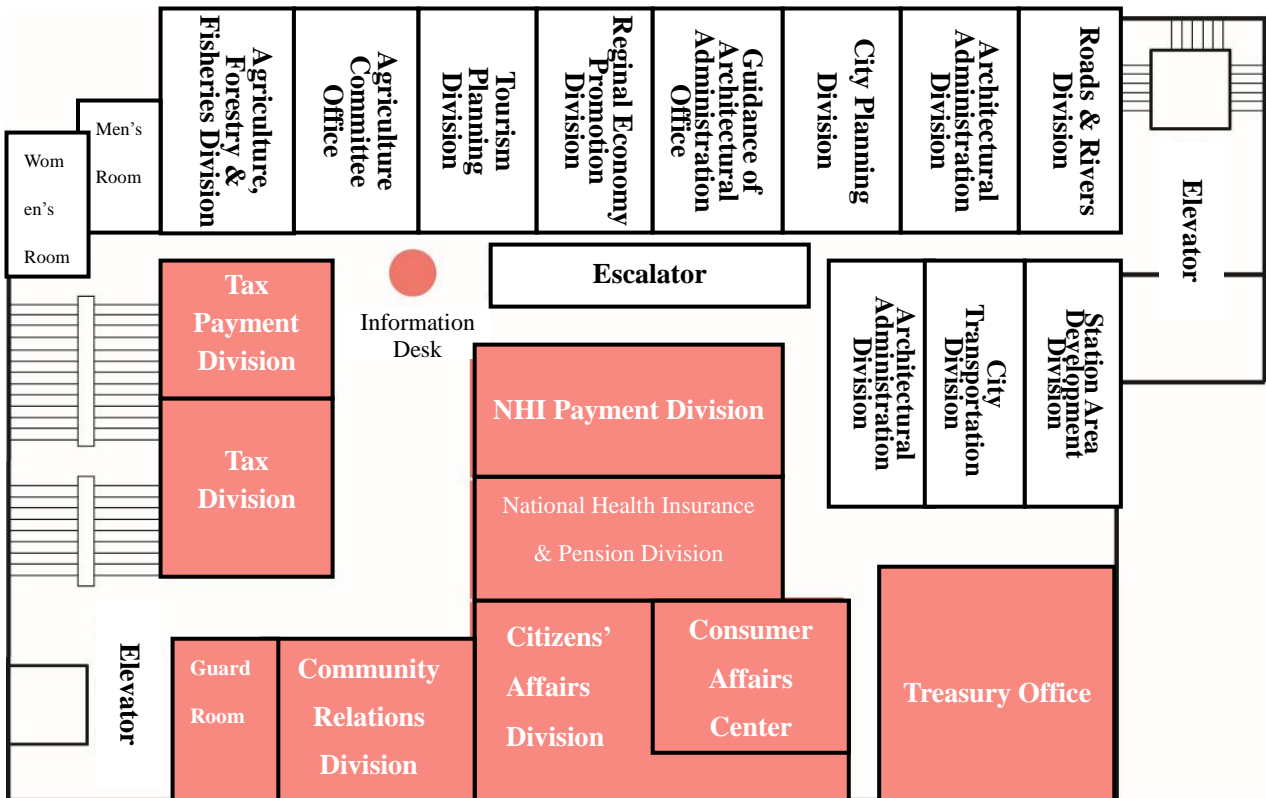
Inquiries: Public Property Management Department Earthquake-resistant Promotion Room

☆The City Hall Moves to A Temporary Building: West Exit of Hikone Station

Map of 4th Floor



Map of 3rd Floor



Q & A

Q, When is the relocation work scheduled to start?

A, The schedule of our relocation work is 11 August (Friday, Holiday) though 16 August (Thursday).

Note: No extra-hour service at any customer desks on the 10th August Thursday.

Q, When are you going to start the administrative services at the new location?

A, Customer Service Desks: Starting on the 14th August (Offices colored in grey: See the maps on the left.)

Other Offices: Starting on the 17th August (The relocation work will be carried out simultaneously.)

Q, What is your business hours of each department/division?

A, Our business hours is from 8:30 to 5:15.

(Closing Dates: Saturday, Sunday, Public Holidays, Dec 29 to Jan 3)

Note: On Thursdays (except holidays), following divisions, such as the Citizens' Affairs, National Health Insurance & Pension, NHI Payment, Tax and Tax Payment Divisions, are open until 7 p.m.

Q, What about the phone numbers and address? Are they going to change, too?

A, No. There is no change in the phone numbers or address. You can mail us by using the same address:

Post Code: 522-8501, Moto-machi, 4-2.

●When You Come to the Temporary Building of the Hikone City Hall by Car

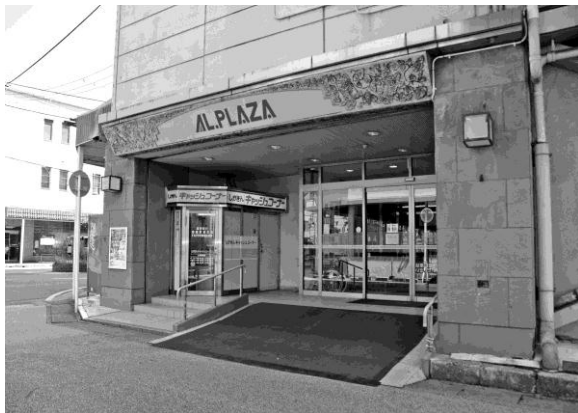
Please use the multistory parking lot of Al-plaza Hikone.

The first two hours are free of charge.



●Accessible Gates for Customers

①



Open at 8:30

②



Open at 9:30

③



Open at 8:30

Issuance of Tax Papers at the Citizens' Affairs Division

- Certificate of Residential Tax
- Income Tax
- Copy of Property Valuation Report
- Copy of Property Valuation Report, Property & Land Tax
- Tax Payment
- Verification Document of Fulfilled Tax Payment

☆The Upper Limit of Burden for High Cost Long Term Care Service is Changed

The upper limit of burden / month

	Until July	From August
Household with a person whose income comparable to current workforce	¥44,400 (*1)	¥44,400 (*1)
Household with a person who pays municipal tax	¥37,200 (*1)	→¥44,400 (*1)
Household with a person who does not pay municipal tax	¥24,600 (*1)	¥24,600 (*1)
☆ A person who receives old-aged welfare pension	¥24,600 (*1)	¥24,600 (*1)
☆ A person whose gross income in the previous calendar year is less than ¥800,000 (the sum total of income + public pension)	¥15,000 (*2)	¥15,000 (*2)
Public assistance recipient	¥15,000 (*2)	¥15,000 (*2)

*1: The sum total of Long-term care service cost for household member on the basic resident register

*2: The amount of the burden upper limit for Long-term care service

Inquiries: The Long-term Care & Welfare Division

Tel 0749-23-9660, Fax 0749-26-1768

☆Special Disability Allowance, Disability Child Allowance and Special Disability Child Allowance

Hikone city will send target persons the information about ‘current status notification’ declaration of income’.

Please submit the document in due time. Regarding special disability child allowance, when you have not submitted for 2years, you lose the right to allowance.

Period for submission: August 10 (Thu) ~ September 11 (Mon)

Inquiries: Welfare Division for person with disability

Tel 0749-27-9981, Fax 0749-26-1767

☆Allowance for Single Parents

The single parents’ allowance is provided for single parent households. This is to encourage the stability and the independence of their lives. Those who are currently receiving the allowance (including the recipients whose allowance is currently suspended) have to make sure to submit the notification of present situation forms within the submission period. We will send the information at the end of July. Unless the notification is submitted, you are not qualified as a recipient.

Submission period: Tuesday, August 1 ~ Thursday, August 31

The window will open until 7 p.m. on every Thursday during August. The window will open from 7 a.m. to 5 p.m. on Saturday, August 19. (The window will be closed on other Saturdays, Sundays and Holidays.)

Submission Place: *Kosodate-shien-ka* (Children’s Welfare Division) , City Welfare Center 2F

Come to City Welfare Center 1 F on Saturday, August 19



Inquiries: *Kosodate-shien-ka* (Children’s Welfare Division)

Tel 0749- 26-0994, Fax 0749-26-1768

☆Application to Receive Pension—National Pension Division

The premium-payment period necessary to get the pension will be shortened from ‘twenty-five years’ to ‘ten-years’. The Japan Pension Service will send the documents in a yellow envelope to the newly subjective people. This system will start on August 1; the pension will be received in October, at the earliest. In case you have not applied yet, please inquire of **Human Rights Policy Division, City Hall. (Tel 0749-30-6113)**

☆Temporary Paddling Pools for Children Have Been Set Up Until Sunday, August 20

Place: *Soto-banba koen* Park (*Kyomachi 2-chome*)

Take koen Park (*Hassaka-cho*)

Time: 10 a.m. ~ 4 p.m.

- * The paddling pools are for young children. They should be accompanied by their guardians.
- * Be careful of injury. Do not enter the pool with your shoes.
- * Do not bring your pets into the pool.
- * In case of an infection such as O157 and a new pandemic flu or bad weather, the pools will be closed.

Inquiries: City Planning Division
Tel 0749- 30-6124, Fax 0749- 24-8517



☆Hiroshima · Nagasaki the Atomic Bomb Exhibition

- Lobby on the first floor of City Hall
Exhibition period: Tuesday, August 1 ~Monday, August 7
Time: 8:30~17:15 (except Saturday, Sunday) * 8:30~16:00 only on Monday, August 7
- An open-stack room in City Library
Exhibition period: Tuesday, August 1~Thursday, August 10
Time: 10:00~18:00 (except Monday) * 10:00~19:00 only on Wednesdays

Organizer: Hikone City · UNESCO Association in Hikone
Cooperator: Hiroshima Peace Memorial Museum · Nagasaki Atomic Bomb Museum
Shiga Peace Museum · Mayors for Peace

Inquiries: General Affairs Division
Tel 0749-30-6100, Fax 0749- 22-1398

☆The Welfare Center Opens a Room for Students.

During summer vacation, the welfare center opens the room to students to study for themselves.

Date: July 26(wed), 27(Thu)

August 1(Tue),3(Thu),8(Tue),10(Thu),16(Wed),17(Thu)22(Tue)24(Thu)

Time: 13:00~16:00

Place: welfare center anex2F group medical check room

Target: junior high school students and high school students

Capacity: 15 persons (first-come basis)

How to use: when you come to the room, please write your name, school, school year, and time

*Hikone city opens rooms for a study.

For details, apply to the Children and YouthDivision

Inquiries: the Children and Youth Division
Tel 0749-49-2251, Fax 0749-26-1768

☆August is a Safety Month for Consuming Electricity

In summer, a lot of electricity accident occurs.

Ministry of Economy, Trade and Industry promotes a safety month for consuming electricity.

Please check electrical product in your house.

- *Don't make overloaded socket.
- *Repair the damaged part.
- *Put a plug tightly
- *Don't keep a plug trampled down.
- *Don't carry out electrical work in your own way.


Inquiry: Kansai Electrical Safety Inspection Association

Tel 0749-23-0354

☆Is This Paper Recyclable or Not?

In the last month issue, we talked about one of the recyclable paper categories "Zatsugami".

However, its problem is that we find a lot of non-recyclable materials in it, which is unwelcome to keep the quality of recycled paper at best for the reuse.

So, this time, we are going to show you some of the paper products unfit for paper recycling even when you see paper materials with the  logo.

- **Paper with odor**

This refers to paper containers & wraps for dish soup, sticks of incense, etc.

The smell of those products cannot be removed in the recycling process of Koshi (used paper waste).

- **Paper with food stains**

Paper containers to store food like pizza boxes, cake boxes and others are categorized into this group.

When the paper containers are stained with food, the stains cannot be fully washed away during the cleaning process.

- **Waterproof paper**

A group of waterproof paper waste comprises paper cups, paper plates, paper bowls for instant noodles, and so on. In order to recycle paper waste, we need to pulp it with water, but those waterproof paper items will not be resolved into the ideal state for paper recycling.

- **Paper with aluminum**

This is applied to *Sake* paper packs with the internal aluminum coating.

During the course of recycling process, it is hard to fully remove the aluminum coating.

- **Others**

- Envelopes with adhesive tapes attached, stickers, etc. cannot be recycled for their adhesive parts are difficult to get rid of.
- Thermal paper like receipts and delivery bills need a special ink, that is, thoroughly removing the ink is remotely possible for paper recycling.
- The hole of the tissue box that has a plastic material is undesirable for paper recycling.
(It becomes recyclable once you take away the plastic part from the tissue box.)

To expedite the recycling process, please take out unrecyclable garbage as burnable.

Inquiries: Consumer Affairs Division

Tel 0749-30-6116, Fax 0749-27-0395

RECRUITMENT & EVENTS

☆The 31st Hikone City Marathon Registration for Participants

Marathon Date & Start Time: Sun. November 12

- | | |
|--|------------------------------------|
| ① 9:14 a.m. for using wheelchair runners | ② 9:15 a.m. for 5km runners |
| ③ 9:20 a.m. for 10 km runners | ④ 9:25 a.m. for 3km, pairs runners |

Place: Hikone Athletic Field & Track and the nearby area

Capacity: The first 2,200 persons

Application Period: ●By postal mail Until Fri. Holi August 11. (the postmark 'Fri. Holi Aug 11' is valid.)

※Please fill the form and apply with the participation fee at the post office. The application form is available at the Board of Education Secretariat, General Information Desk (City Hall 1F), and so on. *N.B. Some offices might be closed on Aug. 11 because of a holiday.

●By internet (<http://runnet.jp/>) Until Fri. September 8

Privileges: Present of Original T-shirt. Some drink service. Lucky Lottery.

Inquiries: The City Marathon Executive Committee Secretariat Tel 0749-24-7975, Fax 0749-23-9190

Distance	Class	Participation Fee
3Km	1. School boys (third grader ~ Sixth grader)	¥1,400
	2. School girls (third grader ~ Sixth grader)	
	3. Junior high school students (girls)	
	4. Adult women (high school students and over)	¥2,600
	5. Pairs of parent and child (elementary school student only)	
	6. Pairs (junior high school students and over)	
5Km	7. Junior high school students (boys)	¥1,400
	8. Adult men (high school students and over)	¥2,600
	9. Adult women (high school students and over)	
10Km	10. Adult men (high school students ~ 39 years old)	¥2,600
	11. Adult men (40years old and over)	
	12. Adult women (high school students and over)	
	13. Using wheelchair (high school students and over)	

※Please come to the place on the day by using public transportation.

Parking area is in short supply at the time because there (swimming pool, etc.) are under a demolition work.

Inquiries: The City Marathon Executive Committee Secretariat

Tel 0749-24-7975, Fax 0749-23-9190

☆Hikone Art School

Top-notch artists specializing in paintings and video creation are going to conduct art classes according to the schedule down below.

Date & Time: August 22nd Tuesday to 27th Sunday

Location: Shiga University

Capacity: 30 (In case a number of applications is over the capacity, participants will be chosen by lot.)

Application Period: August 4th Friday to 14th Friday

Entry: Go to the link – <https://hikone-art-castle.jp>

to fill in necessary items of the online application form.

Inquires: Hikone Castle 410th Anniversary Promotion Committee Office

Tel 0749-30-6143, Fax 0749-23-1916

☆Class for Making Snacks

Content: Cooking simple snacks

Date: ①Friday, August 18 ②Wednesday, August 23 10:00am~12:00pm on both days

Place: Cooking room at Civic Center (Satone-cho)

Targets: ① 4th grade elementary school students ~ 6th grade elementary school students

② 1st grade elementary school students~ 3rd grade elementary school students

Fee: ¥200

Capacity: First 10 students

Application period: Tuesday, August 1 ~ Thursday, August 10

What you need: an apron, a kerchief, drink and towel

Apply & Inquiries: Civic Center Tel · Fax 0749-23-3582

*** Please apply by phone, Fax or at the desk directly.**

☆Hello Training (Public Vocational Training)

There is a vocational training system to acquire the skill or knowledge that needs to get a job. The tuition is free as a rule. You also can take an individual support for getting a job in Hello Work Hikone.

Inquiries: Hello Work Hikone

Tel 0749-22-2500

☆“HIKONE DE ASAICHI” (The Fresh Morning Market in Hikone)

Selling local fresh vegetable, bean curd, local lake sea foods, local SAKE, handcrafted general goods, and soy sauce under the concept "Safety food" "Local production for local consumption" "Handmade".

Date & Time: Sunday, August 20 8:00~12:00

Place: GOKOKU- JINJYA (shrine) (Osue- cho)

Inquiries: “HIKONE DE ASAICHI” Executive Committee

Tel 0749- 24-4461, E-mail hikonedesaichi55@gmail.com

☆Stall for Rent---“WITH Marché 2017”

Stall example: Food (light food, Sweets, Café ex) ,General goods, Health and Beauty, Work shop, Exhibition, Performance

Date & Time: Saturday, November 11 10:00~15:00

Place: KYODO-SANKAKU Center (Gender Equality Center of Hikone, ”WITH”) Main hall & Light exercise room

Capacity: Main hall 15 stalls Light exercise room 30 stalls

Stall Fee: 500 yen for each stall.

Application deadline: The application must reach us no later than Saturday, August 12

※Please request the application guideline and application form to “WITH” or by e-mail.

When completed, please submit the application form to “WITH”.

※Please check the application guideline for details i.e. stall condition.



Inquiries: KYODO-SANKAKU Center (Gender Equality Center of Hikone, ”WITH”)

〒522-0041 Hirarta-cho 670

Tel & Fax 0749-24-3529 E-Mail with.hikone@oboe.ocn.ne.jp

☆Gathering “ECOKKO” Kids Festival

Date & Time: Sunday, August 27 10:00~16:00

Place: VIVA CITY Hikone (Takegahana-cho)

Contents: This event is to learn ecology with games, quizzed and puppet play.

A craft-workshop will be held, which is good for summer vacation research project.

Inquiries: “ECOKKO” kids festival executive committee

(The University of Shiga Prefecture Center for community for co-design)

(Person in charge Tsuji-san) Tel 090-6911-6792 E-Mail tsuji@shigagpn.gr.jp



Consultation

	Date & Time	Place	Contents
Human-Rights Counseling	August 2 (Wed) 13:00 ~ 15:00	Consultation Room (City Hall 1 F)	Counseling about bullying and all acts of discrimination Tel0749-22-0242
	September 6 (Wed) & 20 (Wed) 13:00 ~15:00	Consultation Room AI PLAZA 4F	
Alcohol Consultation	August 4(Fri) September 1(Fri) 14:00 ~16:30 (by reservation)	Public Health Center (Wada-cho)	Issue of alcoholism Tel 0749-21-0283 Fax0749-26-7540
Consultation for Troubled Minds	August 17 (Thu) September 21(Thu) 13:30 ~ 15:30 (by reservation)		Medical instruction. Introduction of a medical institution and facilities Tel0749-21-0283Fax0749-26-7540
Consultation for Depression	August 25 (Fri) 14:00 ~ 15:30 (by reservation)		Supporting a patient with depression and its family from the side of medical care health and the welfare Tel0749-21-0283 Fax0749-26-7540
Consultation for Reclusive and Unsociable People	September 14 (Thu) 15:00 ~17:00 (by reservation)		Helping sufferers 16 years old and over and their families. Tel 0749-21-0283 Fax.0749-26-7540
Mediation Consultation for Free	August 23 (Wed) 10:00~16:00 (acceptance: 9:30~15:30)	Hikone Bunka Plaza (Messe Hall 3F)	Consultation such as land, building, lending and borrowing money, traffic accident, divorce and cost of raising a child *30minutes per person Tel 0749-22-0617
Law Consultation	August 25 (Fri) September 22 (Fri) 13:00 ~ 16:00 (by reservation)	Higasi Community Center (Daito-cho)	*Consultation fee: 5400 yen per 30 minute session (Please pay on the consultation day) *The first 6 people from 8:30 on August 16 & September 13) *Only those who live or work in Hikone Tel0749-30-6117Fax0749-22-1398
Human-Rights Counseling by Multiple Language	Every Mon. ~ Fri. (except holidays)	Otsu Regional Legal Affairs Bureau	Consulting telephone for the trouble of human rights Exclusive telephone for consultation: 0570-090911
Synthetic Consultation for Child & the Young	Every Mon. ~ Fri. (except holidays) ①9:00 ~ 12:00 ②13:00 ~ 17:00	Child & the Young Consultation Center (Welfare center)r	Consultation for person 39years old and younger who has troubles in social life (neet or unsociable person etc). Tel 0749-47-3001 Fax 0749-26-1768
Child・Family Consultation	Every Mon. ~ Fri. except holidays) 8:30 ~ 17:15	Consultation Room for Children (Welfare center)	Consultation for Child care issues, child abuse, domestic violence etc Tel0749-23-7838 Fax0749-26-1768
Developmental Disorder Consultation	Every Mon. ~ Fri. except holidays) ①9:00 ~ 12:00 ②13:00 ~ 16:00 (by reservation)	Welfare Center for the Disabled	4 years old or older person who has a developmental disorder or feels uneasy about it. Only person living in Hikone. Tel 0749-26-8282 ※Health Promotion Division advises for a child who is 3years old or younger Tel 0749-24-0816
Consumer Life Consultation	Every Mon. ~ Fri. (except holidays) ①9:00 ~ 12:00 ②13:00 ~ 16:15	City life Environment Division (City Hall 1 F) (AL PLAZE 3F from August 14	Consultation about the trouble of consumer life, contracts, etc Tel0749-30-6144
Consultation for Bullying/Hot Line	Every Mon. ~ Fri. (except holidays) 9:00 ~ 17:00	School Support Room (Board of Education)	The experienced person in the education advises you *The anonymity is possible *You can consult on the municipal government website Tel 0749-24-7977
Traffic Accident Consultation	Every Tue & Thu ①9:00 ~ 12:00 ②13:00 ~ 16:00	Koto Joint Government Building 2F	Consultation by telephone is also available from Monday to Friday except holiday Tel0749-27-2230

☆Hikone City Residents' Health Checkup

Please have a health checkup once a year as a first step to know your condition. Even serious disease, there is no subjective symptoms at early stage.

Target: Hikone residents ※People over 75 years old on the checkup day should receive the Health checkup at a medical institution (except chest x-ray). A notification was delivered individually at the end of May to the target of 75 years old and over.

Health checkup (medical interview, body measurement, abdominal circumference measurement, blood pressure measurement, urine test, blood test and internal medical checkup) :

- Those who were born between April 1, 1978 and April 1, 1999.
- Welfare recipients who were born before March 31, 1978.

Chest X-ray (※unable to have this at a medical institution):

- For tuberculosis checkup, those who were born before March 31, 1953.
- For checkup of lung cancer, those who were born between April 1, 1953 and March 31, 1978.

Hepatitis virus checkup (on the basis of age at March 31, 2018):

- ① Those who are 40・45・50・55 or 60 years old and have never had a previous Hikone City hepatitis virus checkup. (A notification was delivered individually at the end of May)
- ② Those who are over 41 years old (except ①) and have never had a previous Hikone City hepatitis virus checkup. Be sure to call the City Health Promotion Division, or send a fax at least one week before of the checkup.

Date	Place	Reception Time
August 25 (Fri)	Civic Center	9:30 ~ 11:00
August 29 (Tue)	Takamiya Culture Center	
August 30 (Wed)	Minami District Community Center	
September 1 (Fri)	<i>Kusunoki</i> Center	
*September 2 (Sat)	<i>Kusunoki</i> Center	9:00 ~ 11:00
September 5 (Tue)	Naka District Community Center	9:30 ~ 11:00 13:00 ~ 14:30

*September 2 (Sat) is for women's Health Checkup day. A nursery service for preschool children is available (Reserved. First come, first served.)

Application & Inquiries: The Health Promotion Division

(checkup fee, qualification, preparation, notice, etc.)

Tel 0749-24-0816, Fax 0749-24-5870

☆Please Be Careful of Mosquitoes! To prevent from virus infection

Cut the sources of mosquitoes!!!

Be careful not to be bitten by mosquitoes!!



☆Information of Japanese Encephalitis Vaccination

Japanese encephalitis vaccinations have not been recommended, and then the new vaccinations have been developed. Now the vaccinations can be received as a regular one.

Regular vaccination schedule:

1st phase(3times)the statutory age range : 3 years to 7 years and 6 months,

2nd phase (1 time) the statutory age range : 9 years to 13years.

Special targets of Japanese encephalitis vaccination: Following person can receive the vaccinations.

The special targets of Japanese encephalitis vaccination

- ① Those who missed the opportunities of the vaccinations, born between 1997 April 2 and 2007 April 1, can receive the remaining vaccinations before 20 years old for free.
- ② Those who received the 1st phase vaccinations less than 3 times, born between 2007 April 2 and 2009 October 1, can receive the remaining vaccinations during the 2nd phase period for free.

How to receive the vaccination

Please receive the vaccination with your mother's book and health insurance card, after the reservation to medical institution.

Notes

- *Japanese encephalitis vaccinations can be received 4 times in total. Please make sure so as not to overlap.
- *Pregnant or possibly pregnant women are not allowed to receive vaccinations in principle.
- *In principle, it is needed to receive the guardians. When it is not possible, vaccination can be received with the coupon of guardian non-accompanied vaccination.

Inquiries: Health Promotion Division

Tel 0749-24-0816

☆Class for New Parents

Contents: Guidance & experience about baby care (how to bathe, change a diaper, and hold your new baby)

Date & Time: Sunday, Aug 27 9:30~12:00 (Acceptance 9:15~9:30)

Place : Hikone City Health & Welfare Center Annex2F

Eligibility : Pregnant Women, over 24 weeks pregnant and their partners having a resident registration
in Hikone City

Capacity: 18 couples- Mothers who expect their first child delivery sooner have a priority

Things to bring : Your Maternal or Paternal and Child Health Handbook

Application: Tuesday, Aug 1~Monday, Aug 14

Call the Health Promotion Division Tel 0749-24-0816, Fax 0749-24-5870

※There is no nursery

☆Baby Salon

Date & Time : Tuesday, Aug 1 10:00~11:30 (acceptance 9:45~10:00)

Place: Children's center multi-purpose room

Eligibility: 2~6-month old infants & their guardians

Things to bring: your Maternal and Child Health Handbook, a bath towel

Contents: Exchanging experiences about child-raising and making friends



☆YUYOJI KOBETSU SODAN(Individual consultant for infants)

Please bring your Maternal and Child Health Handbook,

●The & Time : Thursday, August 10&24 Sept 14 & 28 9:30~11:00

Place: *Kusunoki* iCenter 1F(Next to Hikone Municipal Hospital)

*Consultation by a nutritionist is available on Thursday, Aug24 & Sept 28

☆Weaning Period Consultation

* Let's give food twice a day.

Date & Time: Friday, Aug4 & Sept 8 10:00~11:30 (Acceptance 9:45~10:00)

Place: *Kusunoki* Center2F(Next to Hikone Municipal Hospital)

Eligibility: 7~8 months old infant & their guardians

Things to bring: your Maternal and Child Health Handbook

☆Dental Check-up for Pregnant Women

Let's check your teeth and receive the guidance for the proper way to use toothbrush.

Exchanging experiences about pregnant and making friends.

Date & Time : Thursday , Aug 31 13:30~15:30 (Acceptance 13:15~13:30)

Place : *Kusunoki* Center 1F (Next to Hikone Municipal Hospital)

Eligibility : Pregnant women , over 16 weeks pregnant having a resident registration in Hikone City

Application: Tuesday, Aug 1~Monday, Aug 14

Things to bring : Your maternal and Child Health Handbook, Mirror, toothbrush, cup and towel

Inquiries: The Health Promotion Division Tel.0749-24-0816, Fax 24-5870

※ There is no nursery.

☆"PIYOPIYO SALON"

Let's talk freely about the enjoyment and the problem of childcare with a guest midwife.

Date & Time: Wednesday, Aug 30 10:00~11:30 (Reception : 9:45~10:00)

Place: *Kusunoki* Center 1 F

Eligibility: 2~3month old infants and their guardians who have resident registration in Hikone city.

What to bring: Maternal and Child Health Handbook, Bath Towel (The baby wrapper is also ok.)

☆Rakuraku Kin-en (Quit Smoking Easily) Consultation

A smoking habit is nicotine dependence. If you try to quit smoking, we support your challenge.

Date & Time: Wednesday, August 9 & Sept 13 9:00~ 10:00~ 11:00~

Place: *Kusunoki* Center 2F (Next to Hikone Municipal Hospital)

Capacity: 1 person / each time slot (Reserved)

Contents: • Check for your lung's contamination (Measure the carbon monoxide density in your exhalation.)

• Check for your addiction to cigarettes (Measure nicotine density in your urine)

• Consultation on how to quit smoking



Inquiry: The Health Promotion Division
Tel 0749-24-0816, Fax 0749-24-5870

☆Eating Habit Consultation

★Advice about your eating habits by a dietitian manager with your health checkup results.

Date & Time: Fri. August 25, Mon. September 4 ①9:00 ~ ②10:30 ~

Capacity: 1 person/each time slot (Reserved)

Place: *Kusunoki* Center 2F (Next to Hikone Municipal Hospital)

※Any consultations concerning your meals are also available. Please apply by calling anytime.

☆Health Check-ups for Infants

August

Kusunoki Center 1F(Next to Hikone Municipal Hospital)/ 13:00~14:00

4-Month-Old Babies	22(Tue)	Born between Apr1 and 15,2017
	29(Tue)	Born between Apr16 and 30,2017
10-Month-Old Babies	23(Wed)	Born between Oct1 and 15,2016
	30(Wed)	Born between Oct16 and 31, 2016

Kusunoki Center 1F(Next to Hikone Municipal Hospital) / 13:00~14:00

18-Month-Old Babies	18(Fri)	Born between Jan 1 and 15,2016
	25(Fri)	Born between Jan16 and 31,2016
2-Year & 6-Month-Old Children	10(Thu)	Born between Jan1 and 15,2015
	24(Thu)	Born between Jan16 and 31,2015
3-Year & 6-Month-Old Children	7(Mon)	Born between Jan1 and 15,2014
	21(Mon)	Born between Jan16 and 31,2014

September

Kusunoki Center 1F(Next to Hikone Municipal Hospital)/ 13:00~14:00

4-Month-Old Babies	19(Tue)	Born between May 1 and 15, 2017
	26 (Tue)	Born between May16 and 31, 2017
10-Month-Old Babies	13 (Wed)	Born between Nov 1 and 15, 2016
	20(Wed)	Born between Nov 16 and 30, 2016

Kusunoki Center 1F(Next to Hikone Municipal Hospital) / 13:00~14:00

18-Month-Old Babies	8 (Fri)	Born between Feb 1 and 15, 2016
	15 (Fri)	Born between Feb 16 and 28, 2016
2-Year & 6-Month-Old Children	14 (Thu)	Born between Feb 1 and 15, 2015
	21 (Thu)	Born between Feb 16 and 28, 2015
3-Year & 6-Month-Old Children	11 (Mon)	Born between Feb 1 and 15, 2014
	25(Mon)	Born between Feb 16 and 28, 2014

*As individual notification of Health Check-ups is for 4 month-old babies only, please check the Suku-Suku book for what contents and items to bring.

*For Health Check-ups for 18- month-old-babies, a toothbrush is necessary. There will be a class on the correct way of brushing your child's teeth.

*For Health Check-ups for 2-years & 6-month –old children, Please fill out the result of hearing test to the questionnaire.

*For Health Check-ups for 3-years& 6 –month-old children, there is an urinalysis. Please bring a first morning urine sample in a clean bottle.

* If you are unable to come on the date specified or if you have any questions about the Health check for infants, contact The Health Promotion Division Tel 0749-24-0816, Fax 0749-24-5870

Unique Baby Names



Amongst the Japanese, the “*Kira Kira* Name” referring to unusual and unique baby names, is seen as a going phenomenon that can be only found in Japan. Some parents in other countries, however, also choose to pick up uncommon names for their newborn babies, very much like the *Kira Kira* Name.

In Brazil, there is virtually no regulation specifically for the naming of babies, and for this, when babies are born, it is relatively easy to name them without any lawful obstacles. Since the Portuguese language comprises the English alphabet, we cannot use a wide range of different Chinese characteristics to come up with a baby name like many Japanese parents do, yet it is still possible to give names which have the same pronunciation but the different spelling through a combination of different alphabet letters. To take an example, my name “Natalia” can be spelt “Nathalia” or “Natalya”; the same pronunciation but the different spelling.

Besides, some alphabet letters in Portuguese can be applied to only loanwords, so some parents utilize those letters to make babies’ names look more foreign. Other parents even give a name to their newborn baby after popular anime characters or ubiquitous names overseas. In actual fact, a few Brazilian women are named “*SAYONARA*” – a Japanese word for goodbye / see you. For people who are used to the sound of the Portuguese language, the word “sayonara” sounds mellow and easy to get attached to, and this is the reason being that “sayonara” is used only for female babies. Maybe some parents who name their daughters “sayonara” do not have the slightest idea of what that stands for, but in Brazil when choosing names for babies, it appears that we are more likely to think of how they sound and look than what they mean.

Of course, on the one hand some countries, like Japan and Brazil, do not impose a rigorous regulation on picking up a name for new-born babies; on the other, others have a number of strict rules on naming babies. In Denmark, when parents think of a name for their baby, they have to pick up one from a list of the baby names that the Danish government holds. In the case of Germany, in order to register baby names, each must go through the screening done by a local government office, and if did not pass, parents would have to come up with a new name again.

It is fairly understandable that naming babies is once-in-a-life opportunity, so those different rules and laws need to exist, depending on the county. Even knowing that, the fact that one of the mutual things between Japan and Brazil is the “*Kira Kira* Name” has taken me by surprise. It is intriguing that even a small thing like naming babies could teach us a lot of cultural differences.

“Natalia’s Room” is a monthly column published in the Japanese version of Koho Hikone Newsletter since June 2014. Natalia is from Brazil and has been working as Coordinator of International Relations of Hikone since coming to Japan in 2014. This column features topics related to multicultural coexistence, such as difference of cultures and living in Japan as a foreigner.

