



The city where everyone wants to live

広報 ひこね (英訳版)

Community

Newsletter,

Koho

HIKONE



No.1384-85

Date: October 1st, 2017

Published by:

Multicultural Coexistence
Human Rights Policy Division
Hikone City Hall

Tel:

0749-30-6113

Translated by:

VOICE Trans. Group

Proofread by:

Walter Klinger

Edited by:

Multicultural Coexistence
Human Rights Policy Division

2017.10

CONTENTS

- Application for Admission to a Childcare Facility (P.4)
- Gotouchi-chara Fair in Hikone 2017 (P.10)
- Health Checkup in Viva City Hikone (P.14)
- Natalia's Room (No. 39) (P.16)



English

(Abridged Edition) <http://www.city.hikone.shiga.jp/english/index.html>

Name of Division	Telephone Number
Hikone City Hall (Representation)	0749-22-1411 (Main Number)
Hikone City Hall (JINKEN SEISAKU KA) 彦根市役所 (人権政策課)	0749-30-6113 (Direct Number) 直通番号

You can ask English Interpreter Service at the reception in Hikone City Hall.

Please say "English Interpreter please" in Japanese, "EIGO TSUUYAKU ONEGAI SHIMASU".

●“Koho Hikone” foreign language version by Hikone City is issued once every month.

This newsletter is available at

- | | |
|---------------------------|---|
| * Head JP Post Office | * Viva City 2F(near the children play ground) |
| * Yujin Yamazaki Hospital | * Shiga Bank (Oyabu Branch) |
| * Jinnō Clinic | * “GyomuSuper Market”(Toga-cho) |
| * Hikone City Hall 1F | * BeisiaHikone |
| * AEON TOWN Hikone | * Hikone City Hospital |

Various Services

●Interpreters are available if you request this service at the reception desk.

Please say this Japanese sentence “*eigo-tsuyiyaku-onegai-shimasu.*”

(It means “please get me an English interpreter”.) **えいご つうやく おねがいします。**

We might change the interpreter’s availability.

Hikone City Hall: Weekdays **8:30 a.m.to 12:00 p.m. 1:00 p.m. to 5:15 p.m.**



Japanese Classes



Day	Hour	Location, Place	Organization Name to Contact	Cost
Wednesday すいようび	7:00 p.m.to 8:30 p.m.	Shimin kaikan 市民会館	Hikoneshi Kokusai Kyoukai 彦根市国際協会 Tel (0749)-22-5931 (Not available from Dec. to Feb.)	100yen / lesson 100 円 / 1 回
Saturday 土ようび	2:00 p.m. to 4:00 p.m.	Naka-chiku Kouminkan 中地区公民館	Hikone Kokusai Kouryu-kai VOICE ひこね国際交流会 VOICE なえむらさん(NAEMURA) Tel 090-7118-5250	100yen / lesson 100 円 / 1 回
Sunday にちようび	10:00 a.m. to 11:30 a.m.	Nishi-chiku Kouminkan 西地区公民館	Volunteer Nihongo Kyoushitsu SMILE ボランティア日本語教室スマイル よしおかさん (YOSHIOKA) Tel (0749)-24-7241	100yen / lesson 100 円 / 1 回
Monday~ Friday (Except for holidays) げつようび~きんようび	①9:30 a.m. to 10:50 a.m. ②11:00 a.m. to 12:20 p.m. ③1:30 p.m. to 2:50 p.m. ④3:00 p.m. to 4:20 p.m.	Innovation Office “NAYASHICHI” Shiro-machi1-7-16	“Smile s Satellite”(Weekday Class) NAYASHICHI Tel.(0749)-46-5377 or みずのさん(MIZUNO) Tel 070-5661-7345	100yen / lesson 100 円 / 1 回

【Hikone International Lounge News】

Computer use is free in the Hikone International Lounge. We are waiting for your use!!

INFORMATION

☆Information and Request from the Sanitation Center

Direct Drop-Off of Oversized Trash to the Center is Not Allowed

Period: October 23 (Mon) ~ 27 (Fri)

The Center will carry out repair work of the oversized trash disposal place during the above period. During the repair work, the Center will not accept direct drop-off of oversized trash of business systems and a great amount household trash.

During the period, doing direct drop-off of oversized household trash (a small amount) or using of the door-to-door collection service (charged) will be accepted. However, please refrain from direct drop-off to the Center if you can.

Inquiries: The City Sanitation Center -- about direct drop-off of oversized trash



Tel 0749-24-3879, Fax 0749-24-2850

-- about Door-to-door collection service (charged)

Tel 0749-22-2734, Fax 0749-24-7787

☆Garbage Collection on Public Holiday

On **November 3rd, Friday** (Public Holiday), the Sanitation Center collects ONLY CANS at the Friday Collection areas. There is NO collection service for combustible or plastic package & wrapper waste.

In addition, a blue box (Resource Recovery Box) is replaced with another one every time the box is collected.

For this, please avoid writing or setting small wheels on it.

- * Please make sure to take out household waste at a designated area by 8 a.m.
- * Bringing garbage directly into the center is NOT accepted.

Inquiries: Sanitation Center Tel 0749-22-2734

☆Nationwide Traffic Safety Campaign

- ▶ Early lighting headlight
- ▶ To wear light reflection plate

Inquiries: Traffic Control Division Tel 0749-30-6134, Fax 0749-24-5211

☆The Hikone Labor Standard Inspection Office

The minimum wage is 813 yen for an hour.

The minimum wage is applicable to all labors who work in Hikone city.

The minimum wage protects the lowest pay and has an important role labor condition.

*as to special industries, the special minimum wage is fixed separately.

Inquiries: The Hikone Labor Standard Inspection Office

Tel 0749-22-0654, Fax 0749-26-0241

☆Application for Admission to a Childcare Facility (in Fiscal Year 2018)

Application for Admission to a Childcare Facility will be accepted from April of 2018.

A Childcare facility offers child-care for guardians who cannot take care of their child for the following reasons.

Use Standard

1. Guardians work outside the home or run a home business and engage in work other than housework. (more than 48 working hours a month are needed.)
2. As the mother is pregnant or after delivery (2 months before childbirth to 6 months after birth), she cannot take care for her child
3. The guardians are sick, injured or have a disorder.
4. The guardians have family member who needs care at all times or is under observation.
5. The house suffered damage from a fire, wind, or flood etc. and the guardian must work to restore it.
6. The guardians have been seeking for a job. (Acknowledging period is three months.)
7. The guardians attend school.

Childcare Certification

When you apply, you need to be admitted to have qualification according to degree of necessity.

For further detail, ask to Early Childhood Division

Application

Date & Time: Monday, October. 23 ~ Friday, November. 2 (except Saturday, Sunday & Holiday) 8:30 ~ 17:15

*The applications within the above period will have a priority. So please be punctual. However, If the number of applicants is larger than admitted, some applicants may not be accepted.

Place: The nursery facility you want to apply

* As for wish of entering a “*Hikone-Sakura-En*”, please do the procedure at the secretariat of *Hikone-Sogo* High School

* As for wish of entering a childcare facility outside Hikone city or after May of 2018, please come to Early Childhood Division.

You can get the application form at each childcare facility, Reception Desk (the third floor of the temporary office of the west exit of Hikone Station “AL PLAZA”), the branches of City Hall, Children’s Center and Early Childhood Division (the City Health & Welfare Center 2F, *Hirata-cho*) from Tuesday, October 10

Inquiries: Early Childhood Division Tel 0749- 23-9597, Fax 0749-26-1768

Childcare Facility which you want to apply (refer the list)



Name of Facility	Place	Telephone Number	Number of children admitted
Shiritsu-Nishi-Hoikuen	8-21, Nagasone-cho	0749-22-1194	30
Shiritsu-Higashi-Hoikuen	8-4, Yasukiyo-cho	0749-22-1394	30
Shiritsu-Futaba-Hoikuen	101, Kongoji-cho	0749-28-2405	30
Joan-Hoikuen	285-1, Nishiima-cho	0749-22-2582	55
Hinatsu-Hoikuen	2634-1, Hinatsu-cho	0749-28-0614	20
Hanada-Hoikuen	473-2, Kanro-cho	0749-28-0580	10
Take-Hoikuen	1154-5, Sugoshi-cho	0749-28-0681	10
Asahinomori-Hoikuen	498-2, Higashi-nonami-cho	0749-22-2658	40
Toriimoto-Hoikuen	1445, Toriimoto-cho	0749-23-6091	15
Higashiyama-Hoikuen	235, Satone-cho	0749-22-5162	15
Kameyama-Hoikuen	272-2, Katayama-cho	0749-25-1209	10
Shiawase-Hoikuen	1195-1, Minami-kawase-cho	0749-28-0581	20
Inae-Futaba-Hoikuen	2647, Honjo-cho	0749-43-2053	15
Kotobuki-Hoikuen	503, Kamiokabe-cho	0749-43-2057	10
Mizuho-Hoikuen	400-1, Inabe-cho	0749-43-4394	25
Nozomi-Hoikuen	8-20, Honmachi 1chome	0749-22-6011	25
Megumi-Hoikuen	1755, Takamiya-cho	0749-26-5791	20
Runbini-Hoikuen	1-4, Kawara 1 chome	0749-26-1230	20
Hikone-Nyuji-Hoikusho ★	2-6, Nakayabu, 2 chome	0749-22-5768	20
Donguri-Hoikuen	1149-1, Kawasebaba-cho	0749-25-5110	20
Morinoko-Hoikuen	106, Nose-cho	0749-23-4918	30
Asahinomori-Nyuji-Hoiku ★	1099-1, Nodayama-cho	0749-30-3387	10
Leimond-Oyabu-Hoikuen	2655, Oyabu-cho	0749-47-5945	20
Hoikuen-Momonoie-daichi	395-7, Koizumi-cho	0749-47-5500	20
Kodama-Soyokaze-Hoikuen	26-4, Shohoji-cho	0749-22-0415	20
Donguri-Kendaemae-Hoikuen	3248, Hassaka-cho	0749-28-7040	14
Hikone-Sakura-Hoikuen ☆	586, Sergawa-cho	0749-26-3800	90
Hirata-Kodomoen	303-1, Hirata-cho	0749-23-7120	15
Sei-Yozehu-Kindergarten	2-24, Tachibana-cho	0749-22-5376	10
Hikone-Kangaru-Hoikuen *	53-3, Toga-cho	0749-49-2022	4
Hohoemi-En *	181, Hurusawa-cho	0749-22-3332	4
Palette *	2243-2 Singai-cho	080-4384-6114	3

※ 「★」 is nursery for 0 ~ 3 years old child.

※ 「☆」 will be opened in April of 2018

※ Sei-Yozehu-Kindergarten is *Nintei Kodomo-En* for 2~5 years old child

※ 「*」 is for 0 ~ 2 years old child

☆Supplementary Payment of National Pension Premium

For those who find it difficult to pay national pension premiums due to financial reasons, there are “an applied exemption system” (whole amount/ partial amount), “legal exemption system” for disability pensioners and “student payment system” for students.

But if you use these systems the amount of your pension will be less than full. Therefore, Hikone City has set up “Supplementary Payment System”; if you wish to pay the premium for the exempted or postponed period you can pay for up to ten years.

Application & Inquiries:

**National Pension Div., *Hikone Nenkin Jimusho* (Hikone Pension Office) Tel 0749-23-1114 Fax 0749-23-9033
Hoken-Nenkin-ka (Insurance Premiums Div.), City Hall Tel 0749-30-6136, Fax 0749-22-1398**

☆“National Health Insurance” & “Medical Care for the Elderly”

--Please apply within 30 days in case you have a traffic or other accidents--

Things you need for application

- 1 The document to show your disease is caused by the third person
- 2 The document to report how the accident occurred
- 3 The signed and sealed instrument
 - These three documents listed above are available at *Hoken-Nenkin-ka* (Insurance Premiums Div.), City Hall, or you can down-load from Hikone City Home-Page.
- 4 The testimony of the accident (published by *Jidoousha-Anzen-Unten* Center (the Vehicle Safe Driving Center)
 - A copy is acceptable in case of a traffic accident.
- 5 The Insurance Certificate
- 6 Seal (*hanko*)

The following accidents are “the accidents caused by the third person”.

- 1 The traffic accident of bicycles
- 2 The hurt from violence
- 3 The bite by another person’s dog
- 4 The food poisoning caused by meal served by another person

**Inquiries: *Hoken-Nenkin-ka* (Insurance Premiums Div.), City Hall
Tel 0749-30-6112, Fax 0749-22-1398**

☆Legal Consultation Services “*Hou Terrace*”

The services offer helpful information on legal matters entailing money trouble, divorce, inheritance, labor problems and so on free of charge. For persons who can’t afford to consult legal experts, the *Hou Terrace* can offer you access to free consultation services by lawyers, or in some cases, they can temporarily cover the cost of legal consultations.

If you became a victim of crime like blackmail, extortion and so on against you or family members, the *Hou Terrace* will introduce a lawyer who has knowledge in supporting crime victims or relevant authorities to you accordingly.

Inquiries: *Hou Terrace* Switchboard Tel 0570-078-374

***Hou Terrace* Crime Victims Support Tel 0570-079-714**

***Hou Terrace* Shiga Tel 050-3383-5454**

Phone Interpreter Service Tel 03-5366-6008 (9 – 5 p.m.)

☆City Apartment House Are Inviting Residents

Apartment house for rent: for family:

Nakayabu apartment house one apartment

Blue lake hassaka one apartment

Takamiya takenokosi apartment house one apartment

Inae nishi apartment house one apartment (available for one or more people)

Apartment house for wheelchair user:

Baba apartment house one apartment

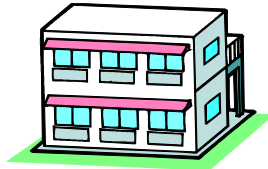
Application form will be available from October (Wed)

Application period: October 11 (Wed) ~ October 20 (Fri)

Acceptance date: the beginning of December

Move- in date: after middle of December

Apply to the architectural administration division at city hall by the applicant or a family member who lives with the apartment.



Inquiry: architectural administration division

Tel 0749-30-6123, Fax 0749-24-8517

☆Recruit New Students at Toriimoto Gakuen in the Year 2018

(Combined junior high and elementary school)

Content: Recruitment for new students entering our school, Toriimoto Gakuen

Target: Student who has a resident registration in Hikone city and enters junior high or elementary school in the year 2018.

Capacity: about 20 students each

Application Date: Monday, December 11~Tuesday, January 23 2018

Inquiries: Board of Education, School Education Division Tel 0749-24-7973, Fax 0749-23-9190

*For more information, please contact us or check Hikone city Website.

☆Beware of a Possible Fire Outbreak: Gas Appliances

As electric household appliances like cooking appliances and water heaters are becoming more prevalent at home, gas appliances, such as gas cartridge stoves and gas boilers that require a fire for the use, are still essential part of our life.

When you use a gas appliance, please make sure to read and follow an instruction manual for your safety.

• How to Use Gas Appliances Properly

- ▶ When you take your eyes off the gas appliance for a moment, there is a chance that a pan will be overheated and catch on a fire. So while cooking, please avoid leaving the kitchen. Overheating a cooking pot filled with cooking oil is one of the leading causes of home fires. Please keep this in your mind, particularly when you cook deep-fried dishes. The newest type of gas cartridge stoves has a safety system. The older type of gas cartridge stoves without the safety system should be replaced with the new ones.
- ▶ If a grill is overly greasy, the grease could catch on a fire when the grill is overheated. Wash all greasy stains out of the grill on a regular basis and keep the stove clean.
- ▶ Make sure that you do not leave something burnable around the stove.
- ▶ There have been some cases that cuffs caught on a fire of the gas stove while cooking meals. So always pay attention to if the cuff is getting too close to the fire or not.

Inquiries: Hikone Fire Department Prevention Department

Tel: 0749-22- 0332, Fax 0749-22-9427

★Consumer Contract Act

This act has been established to protect consumers' benefits from unfair commercial practices so that consumers can sign contracts with business persons on an equal footing.

① **Terms and conditions that mandate that all property renters have to pay for damages caused by wear and tear.**

This certain type of terms and conditions comes under an annulment. Damages and deterioration of buildings, installed equipment, etc. resulting from renters' ordinary use over time are not subjected to any additional payments to the rent.

② **No tuition refund policy to persons who withdrew their admission acceptances.**

The admission conditions that insist on the no refund policy for tuitions fees that were once paid have no position to be enforced. Specifically, for the tuition fees, there is a law called "Gaku-Nokin-Henkan-Shoso" to be implemented in this kind of cases.

③ **Terms and conditions that say "We take no responsibility for any accidents within the facility".**

The membership policy (such as sports gyms) exempting all accountabilities of compensating for damages cannot be enforced.

④ **Cancelation fees of used car purchases.**

If the cancelation fees on your used car purchase are clearly excessive, the cancelation fees will become void.

Inquiries: Hikone Consumer Affairs Center

Tel 0749-30-6144

*For your future consultation services, we may ask your personal information (Name, Address, Phone Number, Age, Occupation, etc.)

★Are You Sorting Out Garbage Correctly?

Here is the list of garbage categories in Hikone.

- Burnable Garbage
- Landfill Garbage
- Large-size Garbage & Small Home Appliances
- Plastic Package / Wrapper
- Plastic Bottles
- Glass Bottles / Jars
- Cans / Metal
- Used Paper / Clothes
- Used Batteries
- Used Fluorescence Tubes, etc.
- Old Cooking Oil

We utilize the waste as "Resources" except three called "Garbage" of the 11 garbage categories above.

Sorting out garbage is about simply not taking it out by the rules, but being able to making the best of reusable resources.

Let's take another look at how properly you separate garbage into each category.

• **Containers, Packages, PET Bottles with Food Stain**

You need to throw out plastic containers, packages, etc. with food stain as burnable garbage. Only bottle caps and labels can be disposed of as plastic package / wrapper. Are you throwing out anything stained with food as burnable garbage?

Plastic food containers like you can find in lunch boxes can be recycled once you wash food stain out of them.

This is true of cans, glass bottles, PET bottles and so on, which cannot be recycled if a residue of liquid or cigarette butts remain inside. Please thoroughly rise them so that all recyclable waste can be reborn as precious materials.

• **Glass Containers Used to Store Chemical or Cosmetic Products**

Please take out the glass containers for chemical and cosmetic products as landfill garbage.

Be careful that only glass bottles for beverages are recyclable.

• **Hard & Thick Plastic Items**

Hard and thick plastic items, such as tooth brushes, hungers, toys, have to be taken out as landfill garbage.

Plastic waste that can be disposed of as plastic package / wrapper had a mark specified below.



Please work together in properly separating garbage to promote recycling!

Inquiries: Living Environment Division

Tel 0749-30-6116, Fax 0749-27-0395

RECRUITMENT & EVENTS

☆Japan Center for Michigan Universities

● “Wednesday Night” series ...Game Night...

Date & Time: Wednesday, October 11 19:00 ~ 20:30

Place: JCMU (Matsubara-cho)

Target: Those who live or work in Hikone and School student in Hikone

*For under 18-yr-old student, be sure to be accompanied by a guardian

Capacity: First 40 people

Fee: Free

Application Deadline: Friday, October 6

Application: Fill out the application form on the website, and bring it to JCMU or send it by Fax or an email

● “Halloween Party for Adult”

Date & Time: Friday, October 27 19:00 ~ 21:00

Place: JCMU (Matsubara-cho)

Target: Those who live or work in Hikone and School student in Hikone

Capacity: First 60 people

Fee: ¥ 1,000

Application Deadline: Friday, October 20

Application: Fill out the application form on the website, and bring it to JCMU with participation fee (¥1000)

Inquiries: JAPAN Center for Michigan Universities Tel 0749-26-3400, Fax 0749-24-9356

e-mail: michigan@jcmu.net / Home page: <http://www.jcmu.net>

☆Hikone Castle Festival&Parade

Date & Time: Friday, Holiday November 3 1:00 p.m. to 3:00 p.m.

Inquiries: Hikone Sightseeing Association Office Tel 0749-23-0001, Fax 0749-26-1919

Tourism Planning Division Tel 0749-30-6120, Fax 0749-24-9676

☆We Are Waiting for Your Idea

Exhibition of ‘Wisdom for everyday life’

Works: works made with disused articles (milk carton, cans, and used clothes)

We are looking forward to receiving works filled with ideas from many peoples.

We are searching for handcrafts too.

Exhibition date: October 14 (sat) 13:00~17:00

October 15 (sun) 9:00~16:00

(Academic meeting: October 15 (sun) 13:30~15:30)

Place: Hikone city culture plaza (Messe Hall)

Deadline for the application: October 10 (Tue)

We are waiting with a participation prize.

Inquiry: Hikone city board of education 〒522-0001 osue-cho 1-38

Tel 0749-24-7974, Fax 0749-23-9190

*please fill in the application form and send to Hikone city board of education

☆Gotouchi-chara (Local Attracting Characters) Fair in Hikone 2017

Date & Time: Saturday, October 21 Sunday, October 22 9:00 ~ 15:00

Place: Around the central shopping areas in the city

Inquiries: Gotouchi-chara Fair in Hikone 2017 Office

Tel 0749-22-1130 Fax 0749-22-1139

Part of the roads will only be for pedestrians from 8:00 to 16:00.

- Yumekyobashi castle road

From Honmachi 1 chome crossroad to Kyobashi crossroad

- Hikone Castle

From Kyobashi crossroad to the fork of the road at Hikone Higashi High School and Otsu District court

- Yonbancho Square area

All areas including parking lots (except some areas)

- Kyobashiguchi public parking lot will be closed from Friday, October 20 to Sunday, October 22 until we will put the parking lot in order and Honmachi city parking lot will be closed from Saturday, October 21 to Sunday, October 22 until we will put the parking lot in order.

Do not come by car, if possible. Come on foot or by bus. During the fair, the area around the fair grounds will be very crowded and the bicycle parking lot will be crowded, too. There are few parking lot this year. (Ninomaru parking lot and Civic Gymnasium parking lot are closed.)

During the fair, the route bus from Hikone Station is free for elementary school children and under, but Shiga University rout bus is not free.



☆Volunteers Wanted Hikone Castle Yabusame (Horseback Archery)

Contents: A. Participation for Yabusame procession (horseback riding) and special seats for enjoying Yabusame

B. Participation for Yabusame procession and help for Yabusame practical demonstration (carrying the target or picking up arrows fall down from the target)

Date & Time: Sunday, October 29 13:00 ~ 16:00 (meet at 11:00 for preparations)

Place: Yabusame procession from Irohatsu (Pine tree avenue) ~ Hikone Castle ~ Ootemae ground
Yabusame demonstration Ootemae ground (Konki-cho)

The number of volunteers to be accepted: A. 3 persons B. 9 persons

Requirements: Volunteers who can march 1 km with period dress (except Junior High School students and under)

Application: Send post card or fax or mail filling in 1. postal code, 2. address, 3. name 4.age, 5.man or woman,

6.phone number, 7. content which you want to participate A or B or both

We cannot accept if your necessary matters are not filled in.

Deadline: No later than Friday, October 13

We will draw if there are quite a few applicants and let you know the outcome by the mail.

Others: The sponsor will get ready for procession dress and lunch



Application & Inquiries: City Tourism Planning Division (postal code) 522-8501 Motomachi 4-2

Tel 0749-30-6120, Fax 0749-24-9676, E-mail: kanko@ma.city.hikone.shiga.jp

☆A Class for the Child

Contents: Let's enjoy the making pancakes with a carton of milk and electric devices.

Date & Time : Saturday, Oct 21 13:30~15:00

Place: Children's Center (Hinatsu- cho) at a multi-purpose room

Target: Elementary and Junior high school students. (Elementary school student must come with a guardian)

Fee: 300 yen

Capacity: 10 (first come, first served)

Application period: Saturday, Oct 7~Wednesday, Oct 18

Notice: We'll use wheat flour for making pancakes. Please be careful if you are allergic to flour.

Application and Inquiries: Children's Center

Tel 0749-28-3645, Fax 0749-28-3646

※Please apply by phone or come to the counter directly.

☆Hikone Kids Festival 2016

It is an event for kids produced by junior high school students in Hikone city. It is full of exciting sections for preschool kids and elementary school students.

Date: Sunday, October 8, 10:00~14:30

Place: Kodomo Center (Hinatsu-cho)

Contents: ▶A haunted house, Escape Game, Exercise game
▶Plastic board accessories, Picture paste
▶Songs and performance, Balloon Art
▶Power generation, Arts, Ground Golf experience corner
▶Astronomical observatory is open to the public



Target: Junior high school students and under

* You need a numbered ticket for some events

Others: We are closed at 15:00 on the previous day (Saturday, 7) We are open from 10:00 to 14:30 on that day.
There is no service for lending playground equipment and playthings on that day.

Inquiries: Kodomo Center
Tel 0749-28-3645, Fax 0749-28-3646



☆Information from Child Center

<Child Rearing Class>

Let's enjoy dancing to the rhythm with your baby

Date: October 16 (Mon) 10:00~11:30

Target: baby who was born April 2, 2014. ~ April 1, 2015. and their guardians

Capacity: 25 pairs

Cost: 200yen

Brings: writing materials, drink, towel

Application date: September 23 (Sat)~October 6 (Fri)

*please wear comfortable clothes on the day

*there is not day nursery

<Star Sky Class>

Let's enjoy the full moon

Let's view the full moon through a big telescope

Date: October 6. (Fri) 19:00~20:30

Target: those who are interested in astronomical observation (under elementary school student need to be accompanied by a guardian)

Capacity: 30 persons

Cost: 300yen

Application date: September 23 (Sat) ~ October 1 (Sun)

*canceled in case of rain

For details, please call child center

Contact: Tell 0749-28-3645, Fax 0749-28-3646

Consultation



	Date & Time	Place	Contents
Human-Rights Counseling	October 4 & 18 (Wed) 13:00 ~ 15:00	Consultation Room (AL PLAZA Hikone 4F)	Counseling about bullying and all acts of discrimination Tel 0749-22-0242
Alcohol Consultation	October 6 (Fri) 14:00 ~16:30 (by reservation)	Public Health Center (Wada-cho)	Issue of alcoholism Tel 0749-21-0283 Fax 0749-26-7540
Consultation for Troubled Minds	October 19 (Thu) 13:30 ~ 15:30 (by reservation)		Medical instruction. Introduction of a medical institution and facilities Tel 0749-21-0283 Fax 0749-26-7540
Consultation for Depression	October 20 (Fri) 14:00 ~ 15:30 (by reservation)		Supporting a patient with depression and its family from the side of medical care health and the welfare Tel 0749-21-0283 Fax 0749-26-7540
Advice on Child Care	October 12 (Thu) 10:30 ~12:00	Children's Center	A nurse advices on child care of infancy Tel 0749-28-3645 Fax 0749-28-3646
Law Consultation	October 27(Fri) 13:00 ~ 16:00 (by reservation)	Higasi Community Center (Daito-cho)	*Consultation fee: 5400 yen per 30 minute session (Please pay on the consultation day) *The first 6 people from 8:30 on October 18 *Only those who live or work in Hikone Tel 0749-30-6117 Fax 0749-22-1398
Human-Right Counseling for Everyone, Dial 110	Every Mon. ~ Fri. (except holidays) 8:30 ~ 17:15	The nearest Legal Affairs Bureau	Consulting telephone for the trouble various human-rights Exclusive telephone for consultation: 0570-003-110
Human-Rights Counseling by Multiple Language	Every Mon. ~ Fri. (except holidays) 9:00 ~17:00	Otsu Regional Legal Affairs Bureau	Consulting telephone for the trouble of human rights Exclusive telephone for consultation: 0570-090-911
Synthetic Consultation for Child & the Young	Every Mon. ~ Fri. (except holidays) ①9:00 ~ 12:00 ②13:00 ~ 17:00	Child & the Young Consultation Center (Welfare center)r	Consultation for person 39years old and younger who has troubles in social life (neet or unsociable person etc). Tel 0749-47-3001 Fax 0749-26-1768
Child・Family Consultation	Every Mon. ~ Fri. (except holidays) 8:30 ~ 17:15	Consultation Room for Children (Welfare center)	Consultation for Child care issues, child abuse, domestic violence etc Tel 0749-23-7838 Fax 0749-26-1768
Developmental Disorder Consultation	Every Mon. ~ Fri. (except holidays) ①9:00 ~ 12:00 ②13:00 ~ 16:00 (by reservation)	Welfare Center for the Disabled	4 years old and older person who has a developmental disorder or feels uneasy about it or it's family. Only person living in Hikone. Tel 0749-26-8282 ※Health Promotion Division advises for a child who is 3years old or younger Tel 0749-24-0816
Consumer Life Consultation	Every Mon. ~ Fri. (except holidays) ①9:00 ~ 12:00 ②13:00 ~ 16:15	City life Environment Division (AL PLAZA Hikone 3F)	Consultation about the trouble of consumer life, contracts, etc Tel 0749-30-6144
Consultation for Bullying/Hot Line	Every Mon. ~ Fri. (except holidays) 9:00 ~ 17:00	School Support Room (Board of Education)	The experienced person in the education advices you *You can consult on the municipal government website Tel 0749-24-7977
Traffic Accident Consultation	Every Tue & Thu ①9:00 ~ 12:00 ②13:00 ~ 16:00	Koto Joint Government Building 2F	Consultation by telephone is also available from Monday to Friday except holiday Tel 0749-27-2230

☆Information of fixed vaccination “Teiki Yobo Sesshu”

Vaccination type are very important in order to have resistance to illness and to prevent from becoming ill.

Before receiving a vaccination, please check a maternity passbook and read the description well.

If you are not sure about the vaccination conditions, please consult with City Health Promotion division.

Eligibility: Children who have resident registration.

Date and Time: Reservation system

Fee: Free

If your child does not receive the vaccination at the recommended age, you will be charged.

Vaccination	Recommended Age (Age Limit for No Fee Vaccination)		Interval, Times
BCG		Until 1day before 1 st birthday	1shot
Hib Vaccine		2 months old before 5 th birthday	1-4shots Depending on age At 1 st shot
Pediatric Pneumococcal Vaccine			
Hepatitis B Vaccine		Until 1 day before 1 st birthday	3 shots (2 nd shots) More than 27days after 1 st shot (3 rd shots) More than 139 days after 1 st shot
DPT-IPV Diphtheria, Pertussis, tetanus and Inactivated polio	1 st phase	The age of 3 months up to 7 years and 6 months	3 shots with 20-56 days intervals
	1 st phase booster		
DT Diphtheria, Tetanus	2 nd phase	6 th grade of elementary school-aged children (Over age 11 , under age 13)	1 shot
MR Measles and German measles	1 st phase	The age of 1 year up to the day before becoming 2 years old	1 shot
	2 nd phase		
Chicken pox vaccination	1 st phase	Over 1 year old, under 3 years old	From 6 months to 12months interval after the initial vaccination.
	Additional		
Japanese encephalitis	1 st phase	Over age 3, under age 7 years and 6 months	2 shots at 6-28 days intervals
	Additional		
	2 nd phase	Over age 9, under age 13	1 shot, about 1 year after the 1 st phase
Human Papilloma virus vaccine	This vaccine is not currently recommended by Hikone city.(6 th elementary-1 st year high school girls)		3 shots

★If you wish your baby to get vaccinated earlier for going abroad , it will be able to receive vaccination from 6 months old when you consult with City Health Promotion Division.

★In case of getting a vaccination outside of Hikone City

If you wish your child to get vaccinated outside of Hikone City, you need to apply to City Health Promotion Division before.

The City Health Promotion Division Tel 0749-24-0816, Fax 0749-24-5870

★Health Checkup in Viva City Hikone.

Date & Time : Oct 5 (Thu) 10:00~11:30

Place: Viva City Hall (2F)

Eligibility

- ▶ Specific medical examination: Aged 40 and over as of March 31,2017 and having National Health Insurance card.
- ▶ Medical examination: Aged 19~39 as of March 31,2017 who has a resident registration of Hikone city .
- ▶ Chest X-ray examination : Aged 40 and over as of March 31,2017 who has a resident registration of Hikone City.

Things to bring: Examination Ticket, Medical Questionnaire and National Health Insurance Card.

Inquiries

- ▶ Specific medical examination : National Health Insurance and Pension Division
Tel.0749- 30-6112, Fax. 22-1398
- ▶ Medical Examination and Chest X-ray examination: The Health Promotion Division
Tel. 0749-24-0816, Fax. 24-5870

★Influenza Vaccination for The Aged (65 and over)

※This Vaccination is for the seasonal flu. We advise you to have the influenza vaccination before flu is prevalent. After having the vaccination, it takes 2 weeks to gain the resistance to the flu. The effect will continue for 5 months.

Qualification: Hikone residents

- ①People aged 65 and over on the appointment day.
- ②People those who are informed by City Hall. (People aged 60 ~ 64 on the appointment day who have defect on heart, kidney or respiratory, or who have defect on a function of immunity by human immunodeficiency virus. 【Equal to the physical disability first grade】).

Fee: ¥1,390 (the vaccination fee is ¥4,640, but Hikone City will pay ¥3,250)

* Free for members of social welfare. Hikone City issue and mail free coupons to those who should get one.

Vaccination Time: Once

Period: Between Sun. October 1 and Thurs. December 28

Be sure to make an appointment beforehand at a medical institution.

Please ask about the medical institutions in Hikone City at City Health Promotion Division or check the 10/1 issue of Japanese *Koho* Hikone.

※People who are in the following condition cannot have the vaccination.

- People who have a fever (37.5 °C and more generally).
- People who are suffering a gravely acute disease.
- People who have had an anaphylaxis to influenza vaccination.
- People who have had a fever or an allergy (ex. Eczema on the whole body) within 2 days after having influenza vaccination.
- When a doctor judged as the person's condition is unfit to have the vaccination.

※For more information, please ask the City Health Promotion Division. Tel 0749-24-0816

★Prevent from Passive Smoking

Breathing in other people's smoke can damage health.

There are two types of tobacco smoke:

*mainstream smoke, which is directly inhaled through the mouth end of the cigarette

*sidestream smoke, which come from the burning tip off the cigarette

Sidestream smoke is about 2~4 times more toxic than mainstream smoke.

This is because sidestream smoke contains much higher levels of the poisons and cancer-causing chemicals in cigarettes.

Passive smoking can increase a non-smoker's risk of illness.

Children:

Asthma, middle ear infection, tooth decay,

Adult:

Lungs cancer, ischemic heart disease, stroke, respiratory functional disorder

Pregnant woman:

Sudden infant death syndrome, abortion, premature birth, infertility,

Smoke blocking partition, extractor fan and domestic air cleaner cannot remove harmful substance.

We must aim for the standard to block passive smoking damage.



☆Rakuraku Kin-en (Quit Smoking Easily) Consultation

A smoking habit is nicotine dependence. If you try to quit smoking, we support your challenge.

Date & Time: Wednesday, Oct 11 9:00~ 10:00~ 11:00~

Place: Kusunoki Center 2F (Next to Hikone Municipal Hospital)

Capacity: 1 person / each time slot (Reserved)

- Contents: • Check for your lung's contamination (Measure the carbon monoxide density in your 体質検査)
 • Check for your addiction to cigarettes (Measure nicotine density in your urine)
 • Consultation on how to quit smoking

Inquiry: The Health Promotion Division Tel 0749-24-0816, Fax 0749-24-5870



☆Nyuyoji Kobetsu Sodan (Individual Consultant for Infants)

Please bring your Maternal and Child Health Handbook,

●Date & Time : Thursday, Oct 12 & 19 9:30~11:00

Place: Kusunoki Center 1F (Next to Hikone Municipal Hospital)

*Consultation by a nutritionist is available on Thursday, Oct 19

☆Weaning Period Consultation

* Let's give food twice a day.

Date & Time: Friday, Oct 6 10:00~11:30 (Acceptance 9:45~10:00)

Place: Kusunoki Center 2F (Next to Hikone Municipal Hospital)

Eligibility: 7~8 months old infant & their guardians

Things to bring: your Maternal and Child Health Handbook

☆Health Check-ups for Infants

October

Kusunoki Center 1F(Next to Hikone Municipal Hospital)/ 13:00~14:00

4-Month-Old Babies	17(Tue)	Born between June 1 and 15, 2017
	24(Tue)	Born between June 16 and 30, 2017
10-Month-Old Babies	11(Wed)	Born between Dec 1 and 15, 2016
	18(Wed)	Born between Dec 16 and 31, 2016

Kusunoki Center 1F(Next to Hikone Municipal Hospital) / 13:00~14:00

18-Month-Old Babies	13 (Fri)	Born between Mar 1 and 15, 2016
	20 (Fri)	Born between Mar 16 and 31, 2016
2-Year & 6-Month-Old Children	12(Thu)	Born between Mar 1 and 15, 2015
	19 (Thu)	Born between Mar 16 and 31, 2015
3-Year & 6-Month-Old Children	16(Mon)	Born between Mar 1 and 15, 2014
	23 (Mon)	Born between Mar 16 and 31, 2014

*As individual notification of Health Check-ups is for 4 month-old babies only, please check the Suku-Suku book for what contents and items to bring.

*For Health Check-ups for 18- month-old-babies, a toothbrush is necessary. There will be a class on the correct way of brushing your child's teeth.

*For Health Check-ups for 2-years & 6-month –old children, please fill out the result of hearing test to the questionnaire.

*For Health Check-ups for 3-years& 6 –month-old children, there is a urinalysis. Please bring a first morning urine sample in a clean bottle.

* If you are unable to come on the date specified or if you have any questions about the Health check for infants, contact The Health Promotion Division Tel:24-0816、 Fax:24-5870



Things Should Not Be Done Alone?

The other day when I was having a chat with my Japanese friend, the focus of our conversation was shifted to the day when I went to a *Yakiniku* (Japanese style of BBQ) restaurant alone. My friend told me that the Japanese did not normally go to a *Yakiniku* restaurant alone and seemed surprised to know that I actually enjoyed the repast without being bothered by other diners around me. To tell you the truth, this was not my first time being told something similar. Since I am living in Japan on my own, I go to various places alone, such as *Yakiniku* restaurants, *Karaoke* places, and others, plus I even have a *Sukiyaki* hot pot party just for myself in my room. When I tell the Japanese about these, there are always some who are taken aback to hear this. At first, I did not understand what they were surprised or confused with whatsoever, yet I gradually came to realize that there are a lot of things that are categorized into either “You should not do individually” or “You should do with your family or friends” in Japan.

It seems that doing certain things without company like singing at a *Karaoke* place, eating out, playing bowling, visiting a theme park, etc. are seen as lonely, and ordinary Japanese people cannot help caring about how others see you. I, for one, understand the feelings of wanting to go to a theme park or bowling with friends, but I do not balk at enjoying my own company at a *Yakiniku* restaurant. For me, the reason being that I go to a *Yakiniku* restaurant is to savor grilled meat, and in this sense, it is not a big deal to me if you eat individually or collectively there.

On top of it, because one of my hobbies is to sing songs, I just love going to a *Karaoke* place by myself. I admit that it is fun to sing *Karaoke* with friends or colleagues; however, I tend to choose songs that match other people's taste of music. So I prefer to sing *Karaoke* alone rather than in a group since I can sing any songs and give a shot at difficult-to-sing songs.

Speaking of activities that you are not supposed to do individually, there are some “the more people you have, the better” things in Brazil, too. To cite an example, Brazilians hardly go to the movies by themselves as a nationwide custom. It is pretty commonplace for Brazilians to go to the movies with either friends or family members, and you can see a ubiquitous scene of sharing the verdicts and ideas while eating at a table after the movie. Otherwise Brazilians would not mind doing things they want to do individually, given that Brazilians do not hang around in a group to do certain things as much as the Japanese people do.

Back in Japan, however, TV media have lately begun to use a new term “Bochiju” to describe a group of people who are totally fine with stopping by a restaurant, singing *Karaoke* without company. In addition, there are many stores setting up a store sign featuring the words like “Single *Karaoke*” or “Single *Yakiniku*”, so maybe among the young population in Japan, the sense of “I do not want to be alone” has slowly started to take a different direction. Either way, my attitude towards *Bochiju*, regardless of whether you can enjoy your own company or not, is all about making each day meaningful.

“Natalia's Room” is a monthly column published in the Japanese version of Koho Hikone Newsletter since June 2014. Natalia is from Brazil and has been working as Coordinator of International Relations of Hikone since coming to Japan in 2014. This column features topics related to multicultural coexistence, such as difference of cultures and living in Japan as a foreigner.

