

The city where everyone wants to live

広報 ひ こ ね (英訳版)

Community

Newsletter

Koho

HIKONE

No.1406-1407

Date: October 1st, 2018

Published by:

Multicultural Coexistence

Human Rights Policy Division

Hikone City Hall

Tel:

0749-30-6113

Translated by:

VOICE Trans. Group

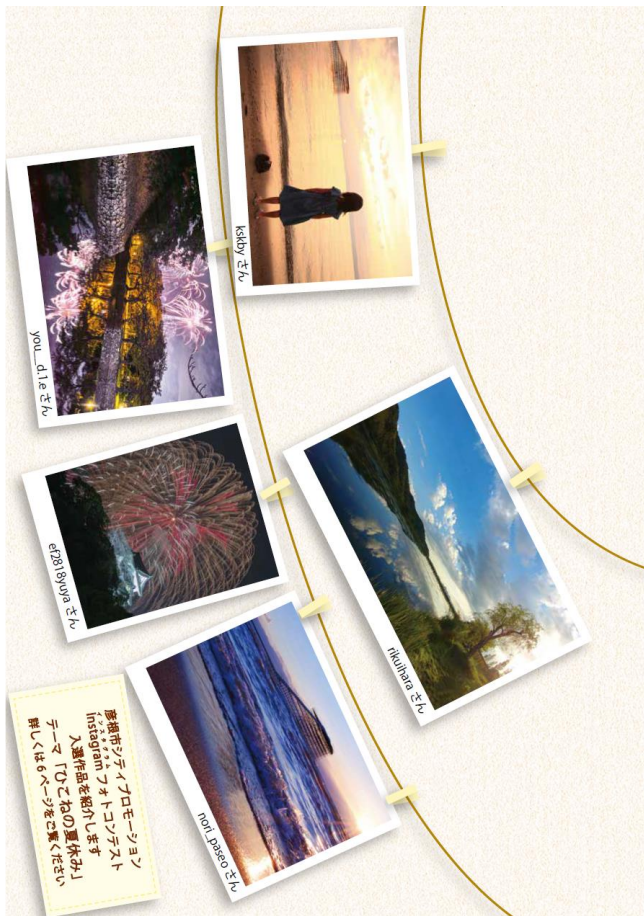
Proofread by:

Walter Klinger

Multicultural Coexistence

Edited by:

Human Rights Policy Division



2018.10

FEATURES

- Hikone Disaster Prevention Manual (P.3)
- Resident Tax: October is the 3rd Payment Month (P.5)
- Application for Admission to a Nursery Center (P.6)
- Hikone Castle Festival Parade (P.9)



(Facebook) <http://www.facebook.com/hikone.eng>

(Abridged Edition) <http://www.city.hikone.shiga.jp/english/index.html>

Contact Us	Telephone Number
Hikone City Hall	0749-22-1411 (Switch Board)
Human Rights Policy Division (For English Interpretation Services)	0749-30-6113 (Direct Number)

You Can Ask for English Interpreter Services at the Reception Desk at the Hikone City Hall and Via Phone (use the contact number given above.)

Please Say “EIGO TSUYAKU ONEGAI SHIMASU (English Interpreter Please)”

●Koho Hikone “foreign language version” is issued every month.

This newsletter is available at:

- | | |
|----------------------------------|----------------------------------|
| * Shiga University | * Welfare Center |
| * University of Shiga Prefecture | * Shiga Bank (Oyabu Branch) |
| * Seisen University | * “Gyomu Super Market”(Toga-cho) |
| * Hikone City Hall 3F | * Beisia Hikone |
| * AEON TOWN Hikone | * Hikone City Hospital |

Various Services

●Interpreters are available if you request this service at the reception desk.

Please say this Japanese sentence “*eigo-tsuyiyaku-onegai-shimasu.*”

(It means “please get me an English interpreter”.) **えいご つうやく おねがいします。**

We might change the interpreter’s availability.

Hikone City Hall: Weekdays **8:30 a.m.to 12:00 p.m. 1:00 p.m. to 5:15 p.m.**



Japanese Language Classes



Day	Hour	Location, Place	Organization Name to Contact	Cost
Wednesday 水曜日	7:00 p.m.to 8:30 p.m.	Shimin kaikan 市民会館	Hikoneshi Kokusai Kyoukai 彦根市国際協会 Tel (0749)-22-5931 (Not available from Dec. to Feb.)	100yen / lesson 100 円 / 1 回
Saturday 土曜日	2:00 p.m. to 4:00 p.m.	Naka-chiku Kouminkan 中地区公民館	Hikone Kokusai Kouryu-kai VOICE ひこね国際交流会 VOICE かつらだ(KATSURADA) Tel 090-7118-5250	100yen / lesson 100 円 / 1 回
Sunday 日曜日	10:00 a.m. to 11:30 a.m.	Nishi-chiku Kouminkan 西地区公民館	Volunteer Nihongo Kyoshitsu SMILE ボランティア日本語教室スマイル よしおかさん (YOSHIOKA) Tel (0749)-24-7241	100yen / lesson 100 円 / 1 回
Monday~ Friday (Except for holidays)	①9:30 a.m. to 10:50 a.m. ②11:00 a.m. to 12:20 p.m. ③1:30 p.m. to 2:50 p.m. ④3:00 p.m. to 4:20 p.m.	Innovation Office “NAYASHICHI” Shiro-machi1-7-16	“Smile s Satellite”(Weekday Class) NAYASHICHI Tel.(0749)-46-5377 or みずのさん(MIZUNO) Tel 070-5661-7345	200yen / lesson 200 円 / 1 回
げつようび~きんようび				

【Hikone International Lounge News】

Computer use is free in the Hikone International Lounge. We are waiting for your use!!

INFORMATION

☆Autumn Traffic Safety Campaign

- Prevent Driving under the Influence

The number of car accidents involving drunk driving in 2017 stands at 12.

Driving while intoxicated can lead to serious traffic accidents. Always remind a person who takes the wheel of “If you drink, do not drive”, and also tell people around that person not to have him/her consume alcohol in order to prevent car accidents from happening.

- Turn on Headlights and Use Reflectors

As a season changes towards the winter, days are starting to get shorter.

So it is important to stay alert on the road, particularly between sunset and sunrise.

Drivers are advised to turn on headlights of their cars before it gets completely dark and use high beams if there are few or no streetlights on the road so that you can see farther down the path to prevent hitting pedestrians, bicyclists, etc.

Pedestrians are also advised to use reflectors to let cars on the road notice you better at night.

Today’s reflectors are sold in different shapes and sizes, like key fobs and sashes, and they are easy to wear. So make a habit of putting on a reflector when you go outside after sunset.

Inquiries: Traffic Management Division TEL: 0749-6134, FAX: 0749-24-5211

☆Multi-Language Version of Hikone Disaster Prevention Manual

In March 2018, the city of Hikone updated its own disaster prevention manual for the Hikone residents.

Now the manual is available in four languages: English, Chinese, Portuguese and Korean.

You can ask for the manual at the following offices in Hikone.

- Disaster & Crisis Management Office
- Citizens’ Affairs Division
- Human Rights Policy Division
- Each Branch Office of Hikone City Hall

(Disclaimer: The Hikone City and its translators are not involved in the translation of the Hikone Disaster Prevention Manual done by the third party. Therefore, we do not take any responsibility for any mistakes or disinformation in the Hikone Disaster Prevention Manual.)

Inquiries: Disaster & Crisis Management Office TEL:0749-30-6150, FAX:0749-23-1777

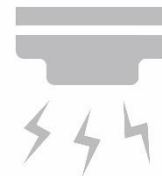
☆Pay Heed to Fires Caused by Gas Stoves

Fires caused by gas stoves account for the major causes of fires, most of the cases are related to the poor use of gas stoves.

When using a gas stove in your home, make sure to follow its safety instruction.

Key Takeaways to Prevent Fire Accidents due to Cooking Appliances

1. Don’t leave while using a gas stove.
2. Thoroughly clean cooking appliances.
3. Don’t place anything combustible nearby cooking appliances.
4. Make sure that your clothes will not touch the fire of a gas stove.



In case your clothes catch on fire, use water to put it out. When there is no water around you, cover your face with your both hands and roll right and left on the ground until the fire goes down.

One of the best ways to prevent such accidents is simply to set up a household fire alarm in your house kitchen. Keep in mind that you are advised to replace a fire alarm with a new one every ten years.

Inquiries: Fire Prevention Division, Hikone Fire Department TEL:0749-22-0332, FAX 0749-22-9427

☆October is Breast Cancer Awareness Month: Pink Ribbons

The pink ribbon campaign began in the U.S. in 1980's in hopes of expressing moral support for women with breast cancer. The pink ribbon also started to spread across Japan in 2000's, and as of today, October is designated as the month to promote early detection of breast cancer and treatment for early breast cancer in Japan.

In Hikone, too, the Pink Ribbon Campaign Committee organizes various breast awareness activities.



Inquiries: Pink Ribbon Campaign Committee TEL:090-1509-1357

☆Hikone Municipal Hospital Opens 'Community Comprehensive Care Ward' on October 1

Municipal hospital is for the treatment of acute disease or serious case at 24 hours a day.

After finishing treatments, 'Community Comprehensive Care Ward' provides rehabilitation or care for the arrangements of home return.

Eligibility: Those who have return scheduled for home or nursing home for the elderly

- *Those who need a follow-up examination
- *Those who need a recovery rehabilitation
- *Those who need a preparation for recuperation at home

Hospital expense: Fixed sum

(almost all expense is included, such as hospitalization basic rate, rehabilitation fee, medicine, injections)

Inquiries: Hikone Municipal Hospital Community cooperation center TEL: 0749-22-6050

☆"National Health Insurance" & "Medical Care for the Elderly"

---Please apply within 30 days in case you have a traffic or other accident---

Things you need for application

- 1 The document to show your disease is caused by the third person
- 2 The document to report how the accident occurred
- 3 The signed and sealed instrument
- These three documents listed above are available at *Hikone-Nenkin-ka* (Insurance Premiums Div.) , City Hall, or you can download from Hikone City Home-Page.
- 4 The testimony of the accident (published by *Jidousha-Anzen-Unten* Center (the Vehicle Safe Driving Center)
- A copy is acceptable in case of a traffic accident.
- 5 The Insurance Certificate
- 6 Seal (*hanko*)

The following accidents are "the accidents caused by the third person".

- 1 The traffic accident of bicycles
- 2 The hurt from violence
- 3 The bite by another person's dog
- 4 The food poisoning caused by meal served by another person

Inquiries: Hoken-Nenkin-ka (Insurance Premiums Div.), City Hall Tel 0749-30-6112, Fax 0749-22-1398

☆Statement of Insurance Payment

~~Necessary for Year-end Adjustment and Final Insurance Tax Return~~

The amount you have paid for insurances (National Health Insurance, Public Nursing-Care Insurance and Medical Care for the Elderly) is target of subtraction when you declare income tax and resident tax.

The Statement of Insurance Payment, how much you have paid for insurances from January 2018 through December 2018, will be sent during the last ten days in October by Hikone City to the payer.

Inquiries: National Health Insurance Premiums Division Tel 0749-30-6145, Fax 0749-22-1398

☆Resident Tax: October is the third Payment Month

You are required to pay the bills on a quarterly basis (June, October and January): Wednesday, October 31 is the third time limit of payment. Please pay the tax making use of the statement of payment Hikone City has already sent.

Inquiries: Tax Division: TEL0749-30-6140, Fax 0749-22-1398

☆Pay Your Bills with PayB

Beginning in October, you will be able to make payments of taxes, bills, etc. by using “PayB.” PayB is the billing app available on both iOS and Android and enables you not to bother to go to a bank or convenience store for the payment any more.

***What You Can Pay with PayB**

Resident Tax, Property Tax, Kei-Car Tax, National Health Insurance Premiums,
Elderly Medical Insurance Premiums, Nursing Insurance Premiums, Water Bill

*You will not receive a receipt when you make a payment with PayB

*When you need a certificate of your Kei-Car tax payment for the car inspection, etc., please apply for the certificate either at the city hall or at its branch offices.

*In such cases where you cannot have a barcode scanned, a barcode is invalid, you missed a deadline or the amount of your payment exceeds 300,000 JPY, you cannot pay your bills with PayB.

*Check further information, for example, whether you can register your bank, go to the website (<http://payb.jp/>).

Inquiries: Tax Division, Tel: 0749-30-6108

Tax Payment Division, Tel: 0749-30-6109

Insurance Premiums Division, Tel: 0749-30-6145

☆City Apartment House Are Inviting Residents

Apartment house for rent: for family:

Daitou apartment house one apartment

Serikawa apartment house one apartment

Blue lake hassaka one apartment

Apartment house for rent: for wheelchair user

Baba apartment house one apartment

Application form will be available from October 3(Wed)

Application period: October 10 (Wed) ~ October 19 (Fri)

Acceptance date: The beginning of December

Move- in date: After middle of December

*Apply to the architectural administration division at temporary city hall by the applicant or a family member who lives with the apartment.

*There are some conditions for applying, so please ask for further details.

Inquiry: architectural administration division Tel 0749-30-6123 Fax 0749-24-8517

☆Installation of Horn Loudspeaker

In order to beef up Hikone’s disaster prevention measures, the city has installed horn loudspeakers in each elementary school and the main office of Hikone. (In the school district of Toriimoto only, the horn loudspeaker was installed in the Toriimoto Junior-high school.) The purpose of these loud speakers is to inform the residents of emergency information, such as an evacuation warning, information of opening shelter, etc. in the wake of a natural disaster.

As of today, the way the city spreads the emergency information within Hikone is carried out through the Email Emergency Alert System, the official Hikone City website, Twitter, NHK TV broadcast, FM Hikone Radio, etc. In addition to them, with a view to getting emergency information across to the residents of Hikone more quickly and efficiently, we decided to install the horn loudspeakers.

*** Please be aware that the city tests out each horn loudspeaker from time to time.**

*** The sound of the horn loudspeakers will not reach the whole of Hikone.**

Inquiries: Disaster & Crisis Management Office: TEL 0749-30-6150, FAX 0749-23-1777

☆Recruit New Students at Toriimoto Gakuen in 2019 (Combined junior high and elementary school)

Content: Recruitment for new students entering our school, Toriimoto Gakuen

Target: Student who has a resident registration in Hikone city and enters junior high or elementary school in the year 2019.

Capacity: about 20 students each

Application date: Monday, December 10~Tuesday, January 22

For more details, please contact us or check Hikone city website

Inquiries: Board of Education, School Education Division Tel 0749-24-7973 Fax 0749-23-9190

☆Guidelines for New Kindergarten Child of Private Nursery School in 2019

<Target and the number to be recruited>

①Midori Kindergarten ▶65 children for 3 years old(those who born between April 2, 2015 and April 1, 2016)

▶ 20 children for 4 years old(those who born between April 2, 2014 and April 1, 2015) ▶5 Children for 5 years old (those who born between April 2, 2013 and April 1, 2014)

②St. Joseph Kindergarten ▶35 children for 3 years old (same as above) ▶A few children for 4 years old (same as above)

▶A few children for 5 years old (same as above)

<The acceptance of an application>

▶Application Date

①Midori Kindergartenonday, Nov. 12 ~ Saturday, Nov. 17 (9:00 ~ 16:00) ②Monday, Oct. 15 ~Tuesday, Oct. 16 (9:00~15:00)

▶Place

(Kawasebaba-cho) ②St.Joseph Kindergarten (Tachibana-cho)

<Inquiries> ① Educational Foundation Nomura-Gakuen Midori Kindergarten Tel&Fax 0749-25-2066 Website <http://www.midori-youchien.info/> ②Educational Foundation Shiga Catholic Gakuen Certified Kodomo-en St.Joseph Kindergarten Tel 0749-22-5376 Fax 0749-22-5523 Website <http://stjoseph.youchien.to/>

※Guidelines about Hikone municipal kindergartens will be announced in the November issue of Koho Hikone.

☆Application for Admission to a Nursery Center (in Fiscal Year 2019)

Application for Admission to a Childcare Facility will be accepted from April of 2019.

A Childcare facility offers child-care for guardians who cannot take care of their child for the following reasons.

1. Guardians work outside the home or run a home business and engage in work other than housework. (more than 48 working hours a month are needed.)
2. As the mother is pregnant or after delivery (2 months before childbirth to 6 months after birth), she cannot take care for her child
3. The guardians are sick, injured or have a disorder.
4. The guardians have family member who needs care at all times or is under observation.
5. The house suffered damage from a fire, wind, or flood etc. and the guardian must work to restore it.
6. The guardians have been seeking for a job. (Acknowledging period is three months.)
7. The guardians attend school.

Childcare Certification

When you apply, you need to be admitted to have qualification according to degree of necessity.

For further detail, ask to Early Childhood Division

Application

Date & Time: Monday, October 22 ~ Friday, November 2 (except Saturday, Sunday & Holiday) 8:30 ~ 17:15

*The applications within the above period will have a priority. So please be punctual. However, If the number of applicants is larger than admitted, some applicants may not be accepted.

Place: The nursery facility you want to apply

* As for wish of entering a childcare facility outside Hikone city or after May of 2019, please come to Early Childhood Division.

You can get the application form at each Childcare Facility, Information Desk (the third floor of the temporary City Hall of Hikone at the west exit of Hikone Station), the branches of City Hall, Family Support Center (*ViVa City* 2F), *Higashiyama* Children's Center, Children's Center and Early Childhood Division (*Hirata-cho*) from Tuesday, October 10
Inquiries: Early Childhood Division (the City Health & Welfare Center 2F)

Tel 0749- 23-9597 Fax 0749-26-1768

	Name of Facility	Place	Telephone Number	Number of children admitted
A	Shiritsu-Nishi-Hoikuen	8-21, Nagasone-cho	0749-22-1194	25
	Shiritsu-Higashi-Hoikuen	8-4, Yasukiyo-cho	0749-22-1394	30
	Shiritsu-Futaba-Hoikuen	101, Kongoji-cho	0749-28-2405	30
	Jonan-Hoikuen	285-1, Nishiima-cho	0749-22-2582	50
	Hinatsu-Hoikuen	2634-1, Hinatsu-cho	0749-28-0614	20
	Hanada-Hoikuen	473-2, Kanro-cho	0749-28-0580	10
	Take-Hoikuen	1154-5, Sugoshi-cho	0749-28-0681	10
	Asahinomori-Hoikuen	498-2, Higashi-nonami-cho	0749-22-2658	40
	Toriimoto-Hoikuen	1445, Toriimoto-cho	0749-23-6091	15
	Higashiyama-Hoikuen	235, Satone-cho	0749-22-5162	10
	Kameyama-Hoikuen	272-2, Katayama-cho	0749-25-1209	15
	Shiawase-Hoikuen	1195-1, Minami-kawase-cho	0749-28-0581	20
	Inae-Futaba-Hoikuen	2647, Honjo-cho	0749-43-2053	20
	Kotobuki-Hoikuen	503, Kamiokabe-cho	0749-43-2057	20
	Mizuho-Hoikuen	400-1, Inabe-cho	0749-43-4394	20
	Nozomi-Hoikuen	8-20, Honmachi 1chome	0749-22-6011	20
	Megumi-Hoikuen	1755, Takamiya-cho	0749-26-5791	20
	Runbini-Hoikuen	1-4, Kawara 1 chome	0749-26-1230	20
	Hikone-Nyuji-Hoikusho ★	2-6, Nakayabu, 2 chome	0749-22-5768	20
	Donguri-Hoikuen	1149-1, Kawasebaba-cho	0749-25-5110	15
	Morinoko-Hoikuen	106, Nose-cho	0749-23-4918	10
	Asahinomori-Nyuji-Hoiku ★	1099-1, Nodayama-cho	0749-30-3387	5
	Leimond-Oyabu-Hoikuen	2655, Oyabu-cho	0749-47-5945	15
Hoikuen-Momonoie-daichi	395-7, Koizumi-cho	0749-47-5500	20	
Kodama-Soyokaze-Hoikuen	26-4, Shohoji-cho	0749-22-0415	20	
Donguri-Kendaemae-Hoikuen	3248, Hassaka-cho	0749-28-7040	5	
Hikone-Sakura-Hoikuen ☆	586, Sergawa-cho	0749-26-3800	15	
B	Hirata-Kodomoen	303-1, Hirata-cho	0749-23-7120	15
	Sei-Yozehu-Kindergarten	2-24, Tachibana-cho	0749-22-5376	5
C	Hikone-Kangaru-Hoikuen ＊	53-3, Toga-cho	0749-49-2022	5
	Hohoemi-En ＊	181, Ekihigashi-cho	0749-22-3332	5
	Palette ＊	2243-2 Singai-cho	080-4384-6114	2
D	Karugamo-Hoikusyo	80,Takegahana-cho	0749-23-1804	5

A:Nursery B:Have a role of kindergarten and nursery C:Capacity is from 6 to 19 people
D:Take care of the child of an employee of a company and children living in that area

※ 「★」 is nursery for 0 ~ 3 years old child.

※Sei-Yozehu-Kindergarten is *Nintei Kodomo-En* for 2~5 years old child

※ 「＊」 is for 0 ~ 2 years old child

★The Hikone Labor Standard Inspection Office

The minimum wage is 839 yen for an hour.

The minimum wage is applicable to all labors who work in Shiga prefecture.

The minimum wage protects the lowest pay and has an important role labor condition.

*as to special industries, the special minimum wage is fixed separately.

Inquiries: Shiga prefecture labor bureau Tel: 077-522-6654

The Hikone Labor Standard Inspection Office Tel 0749-22-0654 Fax 0749-26-0241

★Legal Affairs Bureau will open Holiday Consultation

Legal experts will discuss your problems (inheritance, donation, boundary line, incorporation of the company, human right)

Date: October 7 (sun) 10:00~16:00

Place: Lake Biwa Government Building 1F

Cost: free

Application limit: October 5 (Fri) 17:00

Inquiry: Otsu district legal bureau Tel: 077-522-4772

★What We Do: Profile of KOTO TEIJU JIRITSU-EN (Social Services and Programs for People in Need of Help)

• Enrichment of Social Services for the Disabled

For those who require medical care on a daily basis, such as endotracheal suctioning, a mechanical ventilator, etc., the welfare centre for the disabled “SEIFU” opened in 2010 in the KOTO area (Hikone and four other cities).

In 2017, in order to secure more space to accommodate the increasing number of users at the centre, we allocated funds for building extensions.

We also commissioned the social welfare corporation “TOYOSATO” to respond to medical emergency for in-home patients, to help people who cannot use welfare services for the disabled due to various reasons.

Inquiries of this welfare system: Welfare Division for the Disabled: TEL 0749-27-9981, FAX 0749-26-1767

• Services of Family Support Centre

The centre is a place where guardians who are looking for childrearing support and people who want to help guardians with their childrearing. The aim of this centre is to establish the environment in which guardians can juggle work and being a parent and to improve the structure of the welfare system for working parents and their children.

This centre is organized and run by the Non-Profit Organization “HOIKU Service Dream.”

Contact: Family Support Centre (Hirata-cho), TEL 0749-24-3920

Opening Hours: 9:00 – 5:00 (Mon Web, Thu, Fri), 9:00 – 12:00 (Sat)

Inquiries of this welfare system: Child & Youth Affairs Division, TEL 0749-49-2251, FAX 0749-26-1768

• Day Care Services for Sick Children

When your child/ren is sick, and you are unable to look after them constantly at home, the Day Care Centre “KOALA” can offer you temporary day care services. The centre has been on the mission to shape the environment in which childrearing is supported and to improve the child welfare system.

Target Age Group: Children under 10 years’ old who are living in Hikone, Aito-cho, Toyosato-cho, Kora-cho and Taga-cho.

Application & Contact: Day Care Centre for the Sick Children “KOALA” (Toga-cho)

TEL: 0749-47-5366

Capacity: Max 4 Children Per Day

Opening Hours: 8:30 - 6:00 (Weekdays)

Fee: 2000 JPY for over 4-hour day care

1000 JPY for under 1-hour day care

* Households living under the Livelihood Protection Law can use the centre free of charge.

* Households that are exempt from the resident tax can receive 50% discount on the use of the centre.

How to Use the day care services for sick children at the KOALA:

Please make an appointment with the KOALA at least one day before your preferred date. On the day when you use the service at KOALA, you are required to have your child checked by a paediatrician. After the paediatrician gives you and your child the green light, you can leave your child to staff of the KOALA. Please note that the paediatrician might not give you and your child a permission to use the day care service at the KOALA due to a requirement of a further medical exam on your child, etc.

Inquiries of this welfare system: Early Childhood Division, TEL 0749-23-9597, FAX 0749-26-1768

EVENTS

☆2018 Hikone Kids Festival

This Kids Festival has been organized by elementary and junior-high schoolers since June 2018.

This festival takes place on the following day and time just for kids. There are a lot of games and events children of all ages can have fun with.

Date & Time: October 7th (Sun) 10:00 – 2:30

Location: *Kodomo* (Children) Centre

Details of Festival: Haunted House, Small Sports Day, Handcraft Classes, Musical Performance, Balloon Art, etc.

* Some events require participants to buy a ticket in advance.

Target Age Group: Younger than Junior-high Schoolers

Inquiries: *Kodomo* Centre : TEL 0749-28-3645, FAX 0749-28-3646

☆Hikone Castle Festival Parade

Date & Time : November 3rd (Saturday • Holiday) 1 : 00 p.m. - 3 : 00 p.m. (Scheduled)

To commemorate the birth of Ii Naosuke, “Hione Castle Festival” gorgeously takes place.

In the parade that carries out as its main event and unfolds just like old picture scrolls, a procession of people disguised as warriors in red armor, castle lords, traditional Hikone firefighters, the Ii samurai family, etc. will colorfully enliven Hikone City.



【Route of Castle Festival Parade】

Joto Elementary School → Kyomachi Street → Station Front Castle Street → Iroha Matsu → Inside Hikone Castle → Hikone Higashi High School (Break) → Yume Kyobashi Castle Road → Ginza Shopping Street → Joto Elementary School

※ The route is subject to change.

Ii Naosuke Festival • Dressed Children’s March

Date & Time : October 28th (Sunday) 10 : 00 a.m. - 11 : 00 a.m.

Location : From IROHA MATSU to KONKI Kid’s Park (In front of the Statue of Ii Naosuke)

Inquiries: **Hikone Tourism Association TEL : 0749-23-0001、FAX : 0749-26-1919**

Hikone Tourism Planning Division TEL : 0749-30-6120、FAX : 0749-24-9676

☆“WITH” Festival 2018

Theme: “To the bright future ♥ Let’s jump all together!!”

Contents: Presentations and worksyops by groups listed on “WITH”

Exhibition, Food Stall, Refreshment stand, Flea market, Sport Experience etc

Date & Time: Saturday, October 6 10:00~15:30

Place: KYODO-SANKAKU Center “WITH”

Inquiries: KYODO-SANKAKU Center “WITH” (Hirata-cho) Tel&Fax 0749-24-3529

☆“HIKONE DE ASAICHI” (The Fresh Morning Market in Hikone)

Selling local fresh vegetable, bean curd, local lake sea foods, local *SAKE*, and handcrafted general goods, under the concept "Safety food" "Local production for local consumption" "Handmade".

Date & Time: Sunday, October 21 8:00~12:00

Place: GOKOKU- *JINJYA* (shrine) (Osue- cho)

Inquiries: “HIKONE DE ASAICHP” Executive Committee Tel 0749-24-4461 hikonedesaichi55@gmail.com

★Koura School for Handicapped Children, Study Publication in 2018

Date & Time: Friday, October 26 9:40 ~ 14:30

Saturday, October 27 9:40 ~ 13:30

Place: Prefectural *Koura* School for Handicapped Children, gymnasium
(*Inukami-gun Koura-cho Kanaya*)

Contents: The handicapped children will present the results of their learning

Inquiries: Prefectural *Koura* School for Handicapped children

Tel 0749-38-4880 Fax 0749-38-4885

★Japan Center for Michigan Universities

① Halloween Party for Adult

Date & Time: Friday, October 26 19:00~21:00

Place: JCMU (Matsubara -cho)

Target: Those who live or work in Hikone and school student in Hikone (18years and older)

Capacity: First 60 people

Fee: ¥1,000

Application date: Monday, October 1~Monday, October 22

② Field Trip for International Exchanges

We are going to visit Ishiyama temple and Biwako museum and have fun together through learning history and culture in Shiga.

Date & Time Saturday, November 17 8:45~16:20

Meeting place: JCMU (Matsubara -cho) We are taking a bus from there.

Target: Those who live or work in Hikone city and school student in Hikone. (For under 18 years old students are to be accompanied by a guardian)

Capacity: First 30people

Fee: ¥1,500 for Junior high school student and over. ¥800 for Elementary school student
(free for preschool child. Fee includes admission fee and transportation expenses)

※ You pay lunch or others yourself

Application date: Monday, October 1 ~Friday, November 9

You can apply for two at one time.

How to apply: Fill out the application form on the website and bring it to JCMU with participation fee.

Inquiries: JAPAN Center for Michigan Universities. Tel 0749-26-3400 Fax 0749-24-9356 <http://www.jcmu.net>

★Gotouchi-chara (Local Attracting Characters) Fair in Hikone, Dance Event

Date & Time: Saturday, October 20 The first event 11:30 ~ The second event 13:50 ~

Place: Around the central shopping areas in the city (*Yumekyoubashi* Castle Road)

Fee: Free

Inquiries: Hikone City Board of Education Office for the Promotion of Culture

Tel 0749-23-7810 Fax 0749-21-3080

★A Class for the Child

Contents: Let's enjoy the making pancakes with a milk carton and electric devices.

Date & Time : Sunday, Oct 21 13:30~15:00

Place: Children's Center (Hinatsu- cho) at a multi-purpose room

Target : Elementary and Junior high school students .(Elementary school student must come with a guardian)

Fee: 300 yen

Capacity: 10 (first come, first served)

Application period: Saturday, Oct 6~Wednesday, Oct 17

Notice: We'll use wheat flour, eggs and milk for making pancakes. Please be careful if you are allergic to flour.

Application and Inquiries: Children's Center Tel 0749-28-3645 Fax 0749-28-3646

※Please apply by phone or come to the counter directly.





Consultation

	Date & Time	Place	Contents
Human-Rights Counseling	October 3(Wed) 13:00 ~15:00	Consultation Room (AL PLAZA Hikone 4F)	Counseling about bullying and all acts of discrimination Tel 0749-22-0242
	October 17 (Wed) 13:00~15:00	Inae Branch (Tahara-cho)	
Alcohol Consultation	October 5 (Fri) 14:00 ~16:30 (by reservation)	Public Health Center (Wada-cho)	Issue of alcoholism Tel 0749-21-0283 Fax 0749-26-7540
Mental Health Welfare Counseling	October 19 (Fri) 14:00 ~ 16:00 (by reservation)		Medical instruction for troubled mind. Introduction of a medical institution and facilities Tel 0749-21-0283 Fax 0749-26-7540
Work Consultation for Cancer Patients	October 17 (Wed) 13:30~15:30 (by reservation)	Hikone Municipal Hospital (2F, 3block)	Consultation for work while treatment ※The first 2 or 3persons
Law Consultation	October 26 (Fri) 13:00 ~ 16:00 (by reservation)	Community Relations Division (AL PLAZA Hikone 3F)	*Consultation fee: 5400 yen per 30 minute session (Please pay on the consultation day) *The first 6 people from 8:30 on October 17 *Only those who live or work in Hikone Tel 0749-30-6117 Fax 0749-22-1398
Anything Consulting for Elderly and Challenged People In Koto District	October 6(Thu) 13:30~16:30 ※Acceptance is until 16:00 (by reservation)	Aino-sato (Aisyo-cho, Echi-gun)	Lawyer or judicial scrivener or social worker gives advice you ※Acceptance of reservation starts from October 5 Tel 0749-22-2821 Fax 0749-22-2841
Human-Rights Counseling by Multiple Language	Every Mon. ~ Fri. (except holidays) 9:00 ~17:00	Otsu Regional Legal Affairs Bureau	Consulting telephone for the trouble of human rights Exclusive telephone for consultation: 0570-090-911
Child・Family Consultation	Every Mon. ~ Fri. (except holidays) 8:30 ~ 17:15	Consultation Room for Children (Welfare center)	Consultation for Child care issues, child abuse, domestic violence etc Tel 0749-23-7838 Fax 0749-26-1768
Developmental Disorder Consultation	Every Mon. ~ Fri. (except holidays) ①8:30 ~ 12:00 ②13:00 ~ 17:15 (by reservation)	Development Support Division	Consultation for person who has a developmental disorder or feels uneasy about it and its family Tel 0749-26-8282
Consultation Language Consultation			Consultation for child before entering elementary school who has cares of pronunciation or language and its family Tel 0749-26-8282
Consumer Life Consultation	Every Mon. ~ Fri. (except holidays) ①9:00 ~ 12:00 ②13:00 ~ 16:15	City life Environment Division (AL PLAZA Hikone 3F)	Consultation about the trouble of consumer life, contracts, etc Tel 0749-30-6144
Consultation for Bullying/Hot Line	Every Mon. ~ Fri. (except holidays) 9:00 ~ 17:00	School Support/ Bullying Measures Room	The experienced person in the education advices you *You can consult on the municipal government website Exclusive telephone for consultation: 0749-24-7977
Synthetic Consultation for Child & the Young	Every Mon. ~ Fri. (except holidays) ①9:00 ~ 12:00 ②13:00 ~ 17:00	Child & the Young Consultation Center (Welfare center)	Consultation for person 39 years old and younger who has troubles in social life (neet or unsociable person etc). Tel 0749-47-3001 Fax 0749-26-1768
Traffic Accident Consultation	Every Tue & Thu ①9:00 ~ 12:00 ②13:00 ~ 16:00	Koto Joint Government Building 2F (Moto-machi)	Consultation by telephone is also available from Monday to Friday except holiday Tel 0749-27-2230
Worries Counselor's Office	Every Wed. & Fri. (except second Wed. & holidays) 13:00 ~ 16:00	Welfare Center (Hirata-cho)	Consultation about various worries in your life Exclusive telephone for consultation: 0749-22-0294
	Second Wed. of even month (except holidays) 13:00 ~ 16:00	Northern Elderly Welfare Center (Baba-cho)	
	Second Wed. of odd month (except holidays) 13:00 ~ 16:00	Southern Elderly Welfare Center (Tawara-cho)	

★Hikone city Residents' checkups

Arteriosclerosis can be caused by high blood pressure, high blood sugar, and high blood cholesterol. Arteriosclerosis can increase your risk of developing serious diseases; (heart attack, stroke, kidney failure) These diseases have no symptoms. Please take the medical checkup once a year.

Eligibility Hikone residents and meet the following requirements ①or②

◆**Health checkup** (Medical examination by interview, Body measurement, Abdominal circumference measurement, Blood pressure measurement, Urine test, Blood test, Medical checkup)

- ① Those who were born between April 1 1979 and April 1 2000.
- ② Public assistance recipients who were born before March 31 in 1978.

◆ **Lungs checkup**

Those who were born before March 31 in 1978.

◆**Hepatitis virus checkup**

- ① Those who were 40, 45, 50, 55, 60-year-old and have never had the previous Hikone city's hepatitis virus checkup. A notification will be delivered individually at the end of May.
- ② Those who were over 41 years old and have never had the previous Hikone city's hepatitis virus checkup.

*Please call to the health promotion division, or send a fax within one week before the checkups.

Date	Place	Time
October 9 (Tue)	Toriimoto district center	9:30~11:00
October 10 (Wed)	Takamiya culture center	9:30~11:00
October 15 (Mon)	Naka district center	9:30~11:00
October 20 (Sat)	Kusunoki center	9:00~11:00

★The additional health checkups

The checkup on September 4 was canceled because of the weather. Then, the checkups will be held in addition to the regular schedule.

Date: November 17 (sat)

Place: Kusunoki center

Time: 9:30~11:30

Type of checkups: Health checkups, Hepatitis checkup Lungs cancer checkup: man and women

Large intestine cancer checkup, Breast cancer checkup, uterine cancer checkup: women

How to application: please call reservation number

Telephone: 0749-24-3719 Fax: 0749-24-5870

You can make reservation on Internet.

★Health checkup in Viva City Hikone.

Date & Time : Oct 5 (Fri) 10:00~11:30

Place : Viva City Hall (2F)

Eligibility

- ▶ Specific medical examination: Aged 40 and over as of March 31,2018 and having National Health Insurance card.
- ▶ Medical examination: Aged 19~39 as of March 31,2018.
- ▶ Lung cancer screening: Aged 40 and over as of March 31,2018.

Fee: 200 yen

For cancer screening reservation only : Tel. 24-3719 Fax. 24-5870

▶Specific medical examination : National Health Insurance and Pension Division
 Tel. 30-6112, Fax. 22-1398

▶Medical Examination and Cancer screening : The Health Promotion Division
 Tel. 24-0816, Fax. 24-5870

★NYUYOJI KOBETSU SODAN(Individual consultant for infants)

Please bring your Maternal and Child Health Handbook,

●Date & Time : Tuesday, Oct 9&30 9:30~11:00

Place: Kusunoki Center 1F (Next to Hikone Municipal Hospital)

*Consultation by a nutritionist is available on Tuesday, Oct 30

★Weaning Period Consultation

* Let's give food twice a day.

Date & Time: Friday, Oct 5 10:00~11:30 (Acceptance 9:45~10:00)

Place: *Kusunoki* Center 2F (Next to Hikone Municipal Hospital)

Eligibility: 7~8 months old infant & their guardians

Things to bring: your Maternal and Child Health Handbook

★Influenza Vaccination for The Aged (65 and over)

※This Vaccination is for the seasonal flu. We advise you to have the influenza vaccination before the flu season goes in full swing. After having the vaccination, it takes 2 weeks to start working.

The effect will last around five months.

Qualification to get a flu shot

Hikone residents who:

- ① must be older than 65 on the appointment day.
- ② have been informed by City Hall of the influenza vaccination.

Fee: ¥1,390

*Hikone residents who are older than 65 and live on the Livelihood Protection Law can get a shot for free.

*Those who are subject to the above will receive a ticket for the free vaccine. Make sure to bring the ticket.

Period: Between October 1st, Monday and December 28th, Friday

Be sure to make an appointment beforehand at a medical institution designated by Hikone City.

※People who are in the following conditions cannot have the vaccination.

- Having a fever (37.5 °C and more generally).
- Having been diagnosed with an acute disease.
- Having had an anaphylaxis to influenza vaccination.
- Having had a fever or an allergy within 2 days after having influenza vaccination.
- When a doctor decided you are unfit to have the vaccination on the appointed date.

※For more information, please ask the City Health Promotion Division. Tel 0749-24-0816

★Rakuraku Kin-en (Quit Smoking Easily) Consultation

A smoking habit is nicotine dependence. If you try to quit smoking, we support your challenge.

Date & Time: Wednesday, Oct 10 9:00~ 10:00~ 11:00~

Place: *Kusunoki* Center 2F (Next to Hikone Municipal Hospital)

Capacity: 1 person / each time slot (Reserved)

Contents: • Check for your lung's contamination (Measure the carbon monoxide density in your exhalation.)

• Check for your addiction to cigarettes (Measure nicotine density in your urine)

• Consultation on how to quit smoking

Inquiry: The Health Promotion Division Tel: 0749-24-0816 Fax: 0749-24-5870

★Health Check-ups for Infants

October

Kusunoki Center 1F(Next to Hikone Municipal Hospital)/ 13:00~14:00

4-Month-Old Babies	16(Tue)	Born between June 1 and 15, 2018
	23 (Tue)	Born between June16 and 30, 2018
10-Month-Old Babies	10(Wed)	Born between Dec 1 and 15, 2017
	17(Wed)	Born between Dec 16 and 31, 2017

Kusunoki Center 1F(Next to Hikone Municipal Hospital) / 13:00~14:00

18-Month-Old Babies	12 (Fri)	Born between Mar 1 and 15, 2017
	19 (Fri)	Born between Mar 16 and 31, 2017
2-Year & 6-Month-Old Children	11 (Thu)	Born between Mar 1 and 15, 2016
	25 (Thu)	Born between Mar 16 and 31, 2016
3-Year & 6-Month-Old Children	15 (Mon)	Born between Mar 1 and 15, 2015
	22 (Mon)	Born between Mar 16 and 31, 2015

*As individual notification of Health Check-ups is for 4 month-old babies only, please check the Suku-Suku book for what contents and items to bring.

*For Health Check-ups for18- month-old-babies, a toothbrush is necessary. There will be a class on the correct way of brushing your child's teeth.

*For Health Check-ups for 2-years & 6-month –old children, please fill out the result of hearing test to the questionnaire.

*For Health Check-ups for 3-years& 6 –month-old children, there is a urinalysis. Please bring a first morning urine sample in

A clean bottle.

* If you are unable to come on the date specified or if you have any questions about the Health check for infants, contact The Health Promotion Division Tel:24-0816、 Fax:24-5870

★Information of fixed vaccination “Teiki Yobo Sesshu”

Vaccination type are very important in order to have resistance to illness and to prevent from becoming ill.

Before receiving a vaccination, please check a maternity passbook and read the description well.

If you are not sure about the vaccination conditions, please consult with City Health Promotion division.

Eligibility: Children who have resident registration.

Date and Time: Reservation system

Fee: Free

If your child does not receive the vaccination at the recommended age, you will be charged.

Vaccination	Recommended Age (Age Limit for No Fee Vaccination)		Interval, Times
BCG		Until 1 day before 1 st birthday	1 shot
Hib Vaccine		2 months old before 5 th birthday	1-4shots Depending on age At 1 st shot
Pediatric Pneumococcal Vaccine			
Hepatitis B Vaccine		Until 1 day before 1 st birthday	3 shots (2 nd shots) More than 27days after 1 st shot (3 rd shots) More than 139 days after 1 st shot
DPT-IPV Diphtheria, Pertussis, tetanus and Inactivated polio	1 st phase	The age of 3 months up to 7 years and 6 months	3 shots with 20-56 days intervals
	1 st phase booster		1 year-1 year 6 months after completion 1 st phase
DT Diphtheria, Tetanus	2 nd phase	6 th grade of elementary school-aged children (Over age 11 , under age 13)	1 shot
MR Measles and German measles	1 st phase	The age of 1 year up to the day before becoming 2 years old	1 shot
	2 nd phase	For one year before entering school	
Chicken pox vaccination	1 st phase	Over 1 year old, under 3 years old	From 6 months to 12 months interval after the initial vaccination.
	Additional		
Japanese encephalitis	1 st phase	Over age 3, under age 7 years and 6 months	2 shots at 6-28 days intervals
	Additional		1 shot, about 1 year after the 1 st phase
	2 nd phase	Over age 9, under age 13	1 shot
Human Papilloma virus vaccine	This vaccine is not currently recommended by Hikone city.(6 th elementary-1 st year high school girls)		3 shots

★If you wish your baby to get vaccinated earlier for going abroad , it will be able to receive vaccination from 6 months old when you consult with City Health Promotion Division.

★In case of getting a vaccination outside of Hikone City

If you wish your child to get vaccinated outside of Hikone City, you need to apply to City Health Promotion Division before.

The City Health Promotion Division Tel: 24-0816, Fax:24-5870