

Garbage Collection Calendar

JOTO  
JOHOKU

燃やす Collection Day for Burnable Trash 缶 Collection Day for Aluminum Cans and Metal Items

プラ Collection Day for Plastic Containers and Wraps びん Collection Day for Glass Bottles/Jars 埋立 Collection Day for Landfill (including old batteries and used lighters)

April

Sun.	Mon.	Tue.	Wed.	Thu.	Fri.	Sat.
		1	2	3 燃やす プラ 缶	4	5
6	7 燃やす	8	9	10 燃やす プラ びん	11	12
13	14 燃やす	15	16	17 燃やす プラ 缶	18	19
20	21 燃やす	22	23 埋立	24 燃やす プラ びん	25	26
27	28 燃やす	29	30			

May

Sun.	Mon.	Tue.	Wed.	Thu.	Fri.	Sat.
				1 燃やす プラ 缶	2	3
4	5 収集 なし	6	7	8 燃やす プラ びん	9	10
11	12 燃やす	13	14	15 燃やす プラ 缶	16	17
18	19 燃やす	20	21	22 燃やす プラ びん	23	24
25	26 燃やす	27	28 埋立	29 燃やす プラ	30	31

June

Sun.	Mon.	Tue.	Wed.	Thu.	Fri.	Sat.
1	2 燃やす	3	4	5 燃やす プラ 缶	6	7
8	9 燃やす	10	11	12 燃やす プラ びん	13	14
15	16 燃やす	17	18	19 燃やす プラ 缶	20	21
22	23 燃やす	24	25 埋立	26 燃やす プラ びん	27	28
29	30 燃やす					

July

Sun.	Mon.	Tue.	Wed.	Thu.	Fri.	Sat.
		1	2	3 燃やす プラ 缶	4	5
6	7 燃やす	8	9	10 燃やす プラ びん	11	12
13	14 燃やす	15	16	17 燃やす プラ 缶	18	19
20	21 燃やす	22	23 埋立	24 燃やす プラ びん	25	26
27	28 燃やす	29	30	31 燃やす		

August

Sun.	Mon.	Tue.	Wed.	Thu.	Fri.	Sat.
					1 プラ 缶	2
3	4 燃やす	5	6	7 燃やす プラ びん	8	9
10	11 燃やす	12	13	14 燃やす プラ	15	16
17	18 燃やす	19	20	21 燃やす プラ 缶	22	23
24	25 燃やす	26	27 埋立	28 燃やす プラ びん	29	30
31						

September

Sun.	Mon.	Tue.	Wed.	Thu.	Fri.	Sat.
	1 燃やす	2	3	4 燃やす プラ 缶	5	6
7	8 燃やす	9	10	11 燃やす プラ びん	12	13
14	15 燃やす	16	17	18 燃やす プラ 缶	19	20
21	22 燃やす	23	24 埋立	25 燃やす プラ びん	26	27
28	29 燃やす	30				

Types of Trash and Recyclables You Can Take Out to the Designated Garbage Collection Site in Your Local Area

- \*The maximum size is 40 cm in four directions (roughly the same size as an 18-liter plastic container). You can also take out garden weeds and tree branches that are under 5 cm in thickness and under 60 cm in length as well as umbrellas to the garbage collection site.
- \*To dispose of other types of trash, please bring them to the Hikone Sanitation center as large-sized garbage (for a fee).
- \*Each household is allowed to take out up to five garbage bags of trash at a time.
- \*When it comes to a huge volume of garbage, please take it directly to the Hikone Sanitation center or Koyagi Chuhei Kichi (Higashi Ohmi, Koyagi-cho) for disposal.

Burnable Trash (please use the designated garbage bag.)

- The following types of garbage can also be disposed of as burnable trash. Leather items such as shoes, slippers, boots, etc. (including ones that have metal fittings for shoes), clothes, rubber, sponges, stuffed animals, used disposable hand warmers, ashes (the garbage type of ashes has been changed from landfill to combustible/burnable.)
- \*Garden weeds and tree branches must be under 60 cm in length and 5 cm in thickness. (Weeds and branches bigger than this specific size must be disposed of as large-size garbage.)
- Plastic containers and wraps you cannot remove stains from cannot be recycled, and therefore please take them out as burnable.

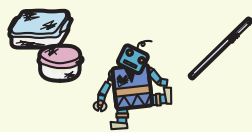


Put tree branches in the designated garbage bag, too.

Plastic containers and wraps (please use the designated garbage bag)

- Plastic containers and wraps include: Plastic containers, plastic bags, plastic cups, plastic bottles (e.g. a shampoo bottle), plastic food trays, Styrofoam (including a Styrofoam box for fruits, fish, etc.) and bubble wrap.
- \*Stained plastic trash has to be disposed of as burnable.
- \*Break up a Styrofoam box and pop bubble wrap before putting them into the designated garbage bag.

- Plastic items that need to be disposed of as landfill garbage Stationery, toys, tooth brush, hangers and straws.
- \*Plastic accessories that come with the above items are also categorized as landfill.



The following plastic items are categorized as landfill garbage.

Landfill (use the designated garbage bag)

- Main landfill garbage The above-mentioned plastic items, umbrellas, glass items, Japanese pottery, ceramics, aluminum foil, DVDs, CDs, cosmetic and medicine containers, crown caps
- Kitchen knives, small knives, sickles Wrap newspapers or cardboards around the blade of your knife, and clearly write "KIKEN" somewhere visible on the paper wrap.
- Old batteries and used lighters Put them in a transparent plastic bag, not the designated garbage bag, and then leave the bag in an old batteries/used lighters collection box.
- Japanese pottery, ceramics and glass items that are too large to fit in the designated garbage bag. In order not to let them scatter, wrap those items in layers of newspaper and break them into pieces (do so safely). Keep all those small pieces wrapped in newspaper, seal it with duct tape and the like, and put it in the designated garbage bag. You are not allowed to dispose of it as large-size garbage.



広告欄

樹木葬 やわらぎ苑

お一人様からでもOK

安心の 永代供養

管理の 心配不要

承継者 不要

株式会社 伊藤 弘 壇

〒522-0033 彦根市芹川町 1435

0120-60-1056

■やわらぎ苑 管理：蓮成寺 〒522-0066 彦根市栄町 1-5-11

女性専用ジム [ファディー]

無料体験受付中!

ファディー 彦根 彦根市平田町 703

TEL.0749-21-5557

不動産相続の相談窓口

複雑な相続も、不動産の売却も。信頼できる専門家が一貫してサポートします。

TRUSTAGENT

滋賀県知事(3)第3507号

〒522-0066 彦根市栄町二丁目6番65号

株式会社トラストエーเจント

TEL.0749-26-2103

Be sure to separate trash correctly, and take out the trash to the designated collection area **no later than 8:00 a.m.** on each collection day.

- 燃やす

Combustible Garbage
- プラ

Plastic Containers and Wraps
- 缶

Aluminum Cans and Metal Items
- びん

Glass Bottles/Jars
- 埋立

Landfill (including old batteries and used lighters)

Glass bottles

(no need to put a glass bottle in any bag. Instead, put it in a glass bottle collection box directly.)

Recyclable glass bottles

For beverages, condiments, and food.

\*Lids, caps and other glass items are categorized as landfill garbage

Glass bottles for liquor

Return any glass bottles for liquor to the place of purchase.

Aluminum cans and metal items

(no need to put aluminum cans and metal in any bag. Instead, put either/both in the aluminum and metal collection box directly.)

Main aluminum cans and metal items

Aluminum and steel cans for snacks, formula milk and beverages, pots (iron, aluminum, enamel, cast metal, etc.), and frying pans

Spray cans, gas cartridges

Completely empty a spray can/gas cartridge before disposing of it.

\*Metal items categorized as landfill garbage

Edged tools such as kitchen knives, small knives, etc. and spoons, forks, can lids and so on.

Plastic bottles

(no need to put plastic bottles in any bag. Instead, put it in the plastic bottle collection box directly.)

How to dispose of plastic bottles.

Remove labels and caps from plastic bottles, and rinse each bottle before taking them out.

Collection site

Drop plastic bottles into a plastic bottle collection box placed across Hikone. To find out collection box locations, please go to the official website of Hikone City.

Collection schedule

You are allowed to drop plastic bottles into a collection box anytime.

Limited to plastic bottles with this mark only.

October						
Sun.	Mon.	Tue.	Wed.	Thu.	Fri.	Sat.
			1	2	3	4
				燃やす	プラ	
					缶	
5	6	7	8	9	10	11
燃やす				燃やす	プラ	
					びん	
12	13	14	15	16	17	18
	収集なし			燃やす	プラ	
					缶	
19	20	21	22	23	24	25
燃やす			埋立	燃やす	プラ	
					びん	
26	27	28	29	30	31	
燃やす				燃やす	プラ	

November						
Sun.	Mon.	Tue.	Wed.	Thu.	Fri.	Sat.
						1
2	3	4	5	6	7	8
	収集なし			燃やす	プラ	
					缶	
9	10	11	12	13	14	15
燃やす				燃やす	プラ	
					びん	
16	17	18	19	20	21	22
燃やす				燃やす	プラ	
					缶	
23	24	25	26	27	28	29
燃やす			埋立	燃やす	プラ	
					びん	
30						

December						
Sun.	Mon.	Tue.	Wed.	Thu.	Fri.	Sat.
	1	2	3	4	5	6
	燃やす			燃やす	プラ	
					缶	
7	8	9	10	11	12	13
燃やす				燃やす	プラ	
					びん	
14	15	16	17	18	19	20
燃やす				燃やす	プラ	
					缶	
21	22	23	24	25	26	27
燃やす			埋立	燃やす	プラ	
					びん	
28	29	30	31			
燃やす						

January						
Sun.	Mon.	Tue.	Wed.	Thu.	Fri.	Sat.
				1	2	3
				収集なし	収集なし	
4	5	6	7	8	9	10
燃やす				燃やす	プラ	
					缶	
11	12	13	14	15	16	17
燃やす				燃やす	プラ	
					びん	
18	19	20	21	22	23	24
燃やす				燃やす	プラ	
					缶	
25	26	27	28	29	30	31
燃やす			埋立	燃やす	プラ	
					びん	

February						
Sun.	Mon.	Tue.	Wed.	Thu.	Fri.	Sat.
1	2	3	4	5	6	7
燃やす				燃やす	プラ	
					缶	
8	9	10	11	12	13	14
燃やす				燃やす	プラ	
					びん	
15	16	17	18	19	20	21
燃やす				燃やす	プラ	
					缶	
22	23	24	25	26	27	28
燃やす			埋立	燃やす	プラ	
					びん	

March						
Sun.	Mon.	Tue.	Wed.	Thu.	Fri.	Sat.
1	2	3	4	5	6	7
燃やす				燃やす	プラ	
					缶	
8	9	10	11	12	13	14
燃やす				燃やす	プラ	
					びん	
15	16	17	18	19	20	21
燃やす				燃やす	プラ	
					缶	
22	23	24	25	26	27	28
燃やす			埋立	燃やす	プラ	
					びん	
29	30	31				
燃やす						

Collected at the city hall or its branch offices

Cooking oil

Fluorescent tubes, light bulbs, etc.

Collected at the Hikone Sanitation center

Large-size garbage

(including household appliances smaller than 1 meter in length, width and depth)

Collection Date: Monday to Friday (except holidays, weekends, New Year holiday period.)

Collection Time: 9:00 AM to 12:00 PM, 1:00 PM to 4:15 PM

Aside from bringing garbage directly to the Hikone sanitation center, a garbage pick-up service is also available for a fee. (To use this service, you are required to schedule your pick-up day with the center at least one week in advance.)

\*The Hikone sanitation center also offers a holiday garbage collection service at the center. Details on schedules of the center's holiday garbage collection service will be provided via Hikone's community newsletter, etc.

Contact

The Hikone Sanitation center

Tel. 0749-22-2734 FAX. 0749-24-7787

Address: 522-0055 Hikone-shi Nose-cho 279-1

- イラストの出典：経済産業省ウェブサイトのイラストを基に作製 (https://www.meti.go.jp/policy/recycle/main/data/illust/index.html)
- このカレンダーは、72,000 枚作製し、1 枚当たりの印刷単価 13 円（1 円未満の端数切捨）です。ただし、原稿作成などにかかる職員の人件費は含んでいません。

相続税申告や税務会計顧問お任せください

相続対策

開業支援

事業承継支援

初回相談無料

まずは、お問合せください！

0749-24-9179

misu-tax@tkcnf.or.jp

522-0074 滋賀県彦根市大東町11番8号

お客様に寄り添うパートナー

三須税理士法人

代表税理士・行政書士 三須友晶

TKC

アルプラザ彦根

セブンイレブン彦根駅前店

ABホテル彦根

京都銀行

彦根勤労福祉会館

当事務所

2025年春 彦根より移転

JR彦根駅より徒歩約5分

不動産全般

賃貸・管理・テナント・宅地分譲・売買仲介

無料査定! 不動産買取

相続でお悩みの方。

空き家・空き地でお困りの方も

お気軽にご相談ください!

滋賀県知事(9)第1934号

空き家相談員がいる店

親切・信頼・安心がモットー

(株)シバタ不動産

彦根市西今町963-5

ベルロード沿い  
ひこね市文化プラザ近く

TEL(0749)23-2401